

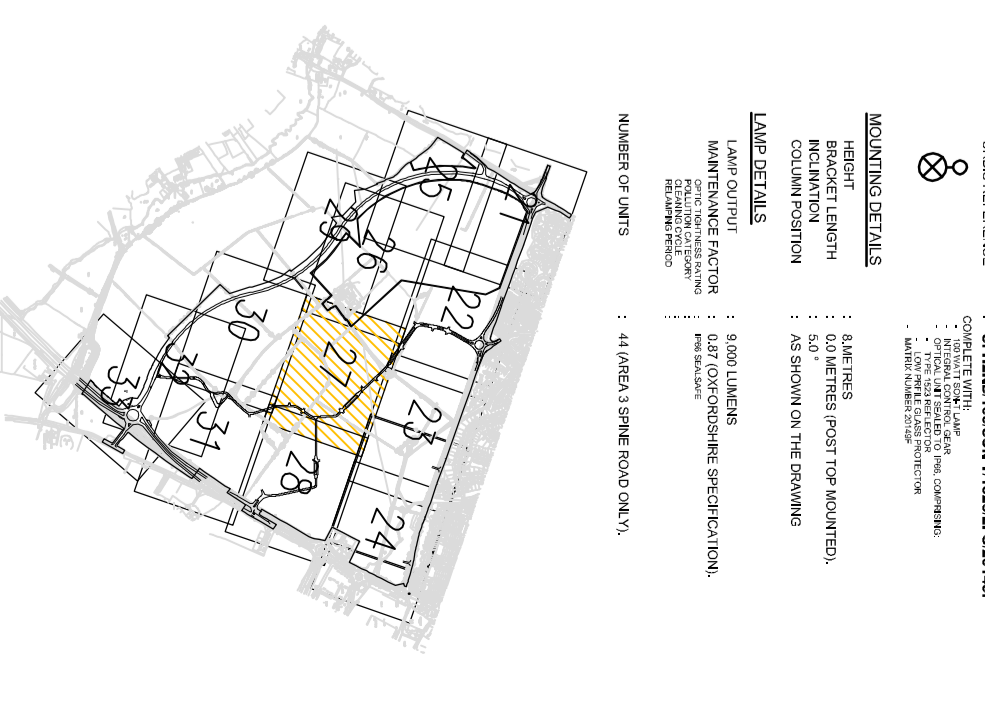
THIS DRAWING IS IN THE PRELIMINARY STAGE AND SHOULD NOT BE RELIED UPON FOR CONTRACTUAL OR COST COMMITMENT PURPOSES

DO NOT SCALE

- NOTES:**
1. THIS DRAWING SHOULD BE READ IN CONJUNCTION WITH ALL SPECIFICATIONS.
 2. ALL DIMENSIONS ARE IN METRES UNLESS OTHERWISE STATED. DIMENSIONS ARE ALSO IN METRES.
 3. EXISTING LEVELS AND DIMENSIONS ARE TO BE CHECKED AND CORRECTED ON SITE.
 4. ANY DISCREPANCIES SHOULD BE REFERRED TO THE ARCHITECT/ENGINEER IMMEDIATELY UPON COMMENCEMENT OF WORKS TO AVOID DELAYS TO THE PROJECT.
 5. PRIOR TO COMMENCEMENT OF CONSTRUCTION WORKS, EXISTING LEVELS AND DIMENSIONS ARE TO BE CHECKED AND CORRECTED ON SITE.
 6. ANY DISCREPANCIES SHOULD BE REFERRED TO THE ARCHITECT/ENGINEER IMMEDIATELY UPON COMMENCEMENT OF WORKS TO AVOID DELAYS TO THE PROJECT.
 7. THE LOCATION OF ANY SERVICES SHOWN ON THIS DRAWING ARE INDICATIVE ONLY. IT WILL BE THE RESPONSIBILITY OF THE CONTRACTOR TO LOCATE AND MARK THE POSITION OF ALL SERVICES PRIOR TO COMMENCEMENT OF CONSTRUCTION.
 8. ANY EROSION/SEDIMENTATION WORKS SHOULD BE TO BE COMPLETED IN ADVANCE OF THE PROPOSED WORKS AND IN ACCORDANCE WITH THE RELEVANT STATUTORY REQUIREMENTS.
 9. STREET LIGHTING COLUMNS TO BE LOCATED AT BACK OF FOOTWAY TO 2.0M FROM KERB.
 10. REFER TO SIGN FACE DWG No: 1903/TS/002 AND BOLLARD DWG No: 1903/TS/012.
 11. REFER TO SIGN FACE DWG No: 1903/TS/010 AND BOLLARD DWG No: 1903/TS/010.
 12. STREET LIGHTING LAYOUT TO BE DESIGNED ON APPROXIMATE DATE.

LANTERN SPECIFICATION

1. LANTERN TYPE: MODERN
2. LANTERN HEIGHT: 3.0M
3. LANTERN FINISH: POLYESTER POWDER COAT
4. LANTERN GLASS: 10MM CLEAR GLASS
5. LANTERN LIGHT SOURCE: 150W HPS
6. LANTERN MOUNTING: STREET LIGHT MOUNTING
7. LANTERN DIMENSIONS: 1500MM H x 150MM W x 150MM D
8. LANTERN WEIGHT: 15KG
9. LANTERN REFERENCE: 1903/TS/010



NO	DATE	BY	DESCRIPTION	SCALE	STATUS
1	1903/TS/027	JP	ISSUED FOR TENDER	1:100	ISSUED
2	1903/TS/027	JP	ISSUED FOR TENDER	1:100	ISSUED
3	1903/TS/027	JP	ISSUED FOR TENDER	1:100	ISSUED
4	1903/TS/027	JP	ISSUED FOR TENDER	1:100	ISSUED
5	1903/TS/027	JP	ISSUED FOR TENDER	1:100	ISSUED
6	1903/TS/027	JP	ISSUED FOR TENDER	1:100	ISSUED
7	1903/TS/027	JP	ISSUED FOR TENDER	1:100	ISSUED
8	1903/TS/027	JP	ISSUED FOR TENDER	1:100	ISSUED
9	1903/TS/027	JP	ISSUED FOR TENDER	1:100	ISSUED
10	1903/TS/027	JP	ISSUED FOR TENDER	1:100	ISSUED

FOR TECHNICAL APPROVAL

WSP

WSP Group plc
 100, The Quadrant, Basingstoke, Hampshire RG24 1AU
 Tel: +44 (0)1256 338800 Fax: +44 (0)1256 338810
 www.wspgroup.com

COUNTRYSIDE PROPERTIES

SOUTH WEST BICESTER
BICESTER, OXFORDSHIRE

SIGNS AND LINES LAYOUT

LAYOUT 7

DATE:	1903/TS/027	DESIGNED BY:	JP	CHECKED BY:	JP
DRAWN BY:	JP	ISSUED BY:	JP	APPROVED BY:	JP
SCALE:	1:100	PROJECT NO:	1903/TS/027	DATE:	08/01/2009

© WSP Group plc