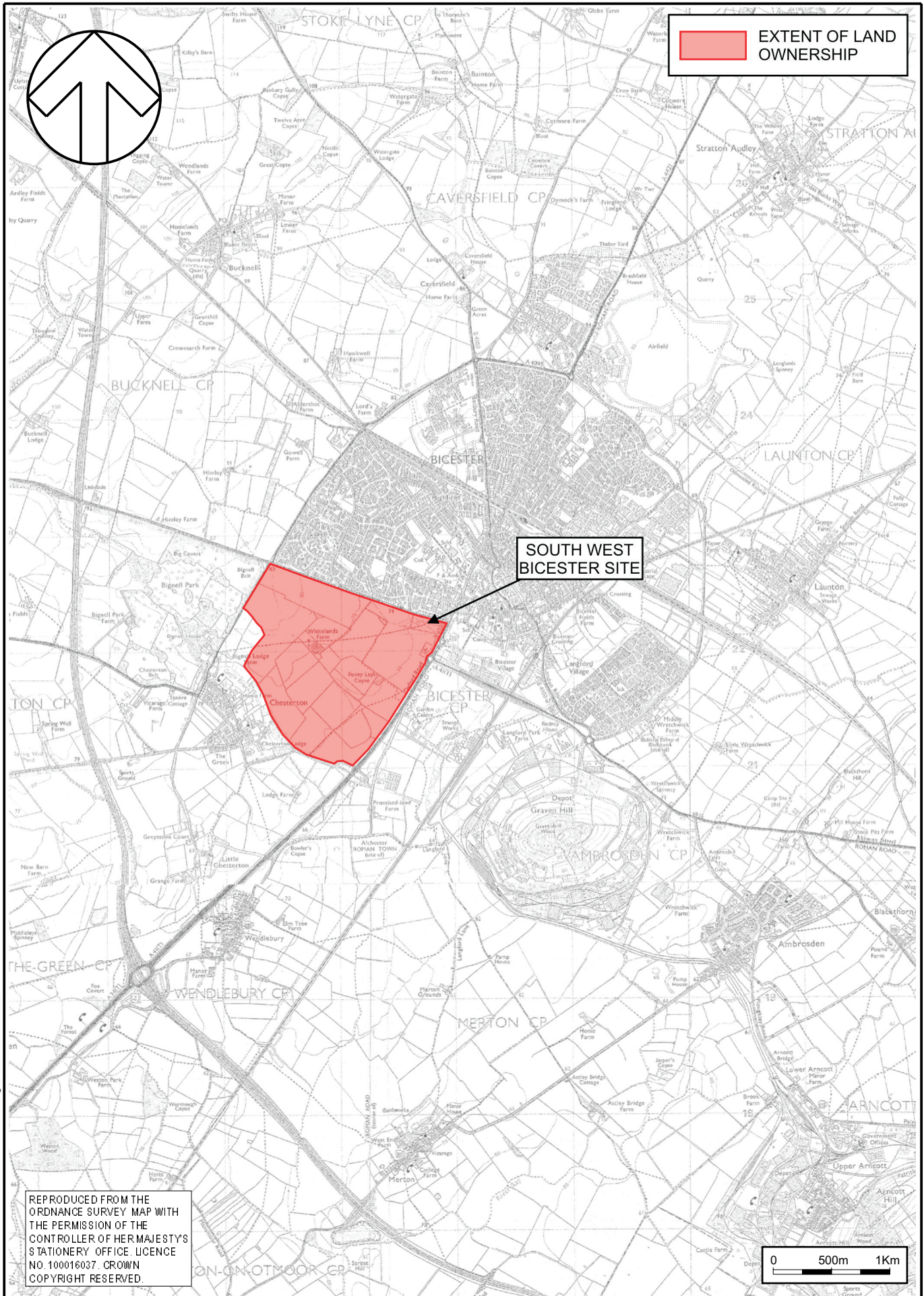






---

## FIGURES



REPRODUCED FROM THE  
 ORDNANCE SURVEY MAP WITH  
 THE PERMISSION OF THE  
 CONTROLLER OF HER MAJESTY'S  
 STATIONERY OFFICE. LICENCE  
 NO. 100016037. CROWN  
 COPYRIGHT RESERVED.

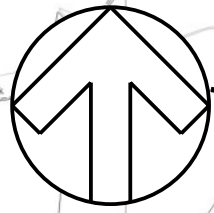
N:\South West Bicester\DRAWINGS\Core\October 2006 TA\1546-Fig 6-Site Location.cdr



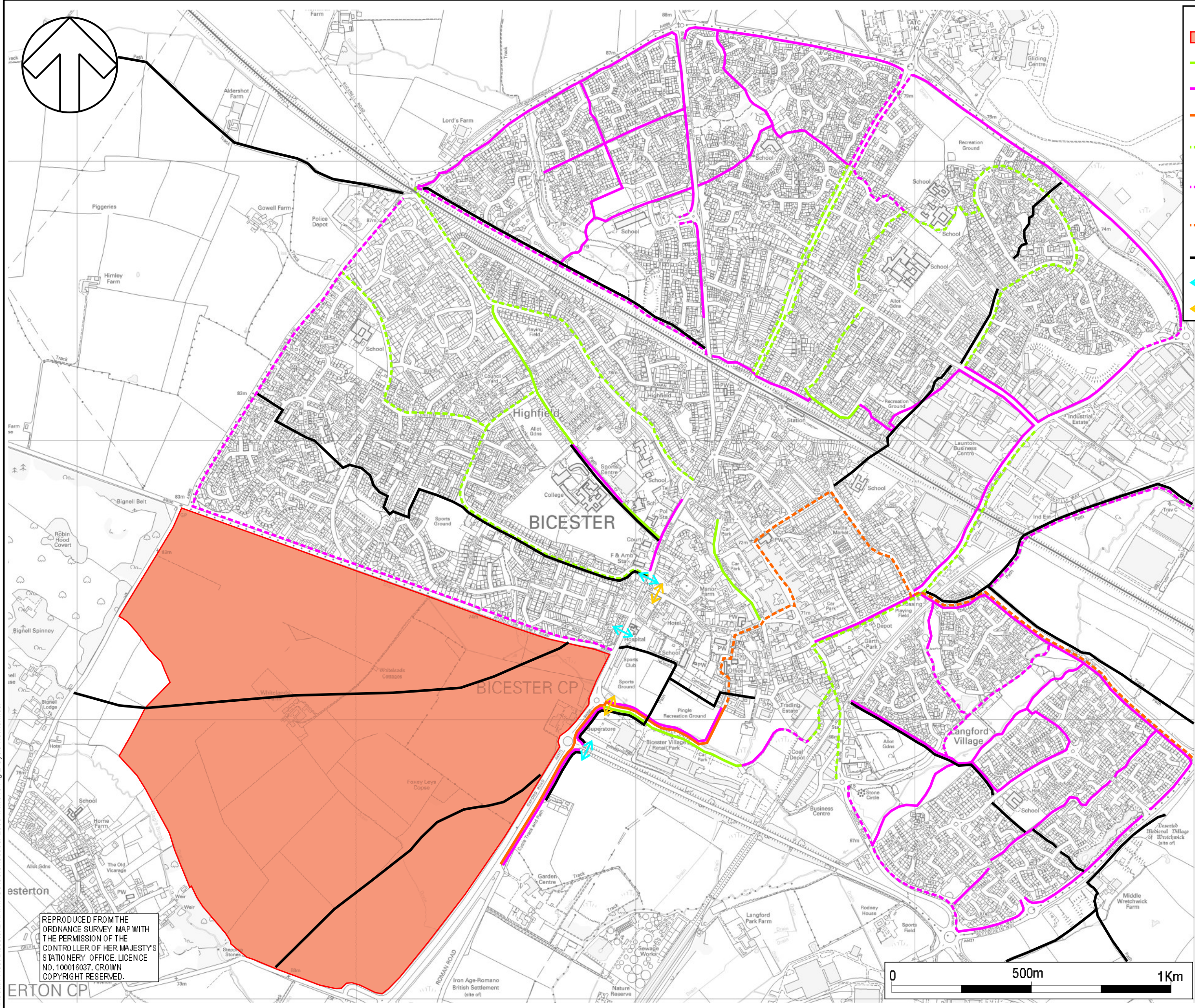
TITLE:  
**SITE LOCATION**

FIGURE No:  
**1**

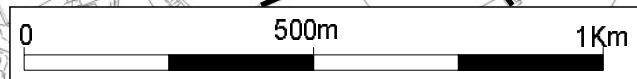




- KEY**
- EXTENT OF LAND OWNERSHIP
  - ON STREET CYCLE ROUTE
  - OFF STREET CYCLE TRACK
  - NATIONAL CYCLE TRACK
  - FUTURE ON STREET CYCLE LANES
  - FUTURE OFF STREET CYCLE TRACK
  - FUTURE NATIONAL CYCLE TRACK
  - PUBLIC RIGHT OF WAY
  - CONTROLLED CROSSING
  - UNCONTROLLED CROSSING



REPRODUCED FROM THE  
ORDNANCE SURVEY MAP WITH  
THE PERMISSION OF THE  
CONTROLLER OF HER MAJESTY'S  
STATIONERY OFFICE. LICENCE  
NO. 100016037. CROWN  
COPYRIGHT RESERVED.



TITLE:  
**EXISTING PEDESTRIAN  
AND CYCLE NETWORK**

FIGURE No: **2**

N:\South West Bicester\DRAWINGS\CS\10\October 2006 TA11546-Fig 2-Cycle Network.cdr