

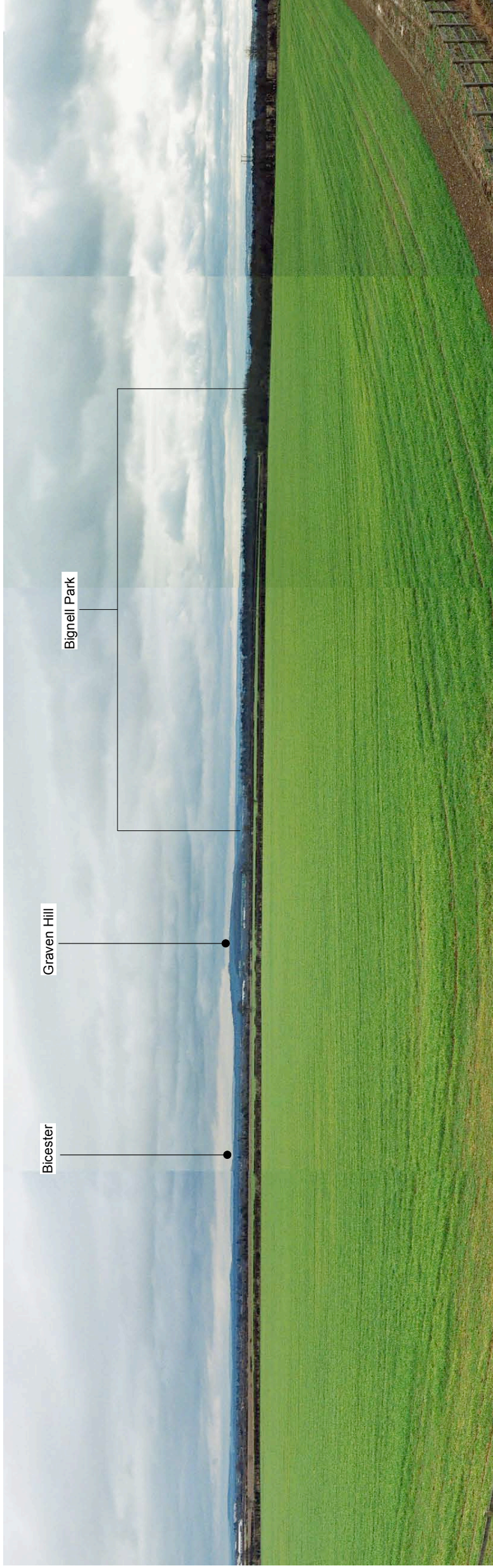
Winter
View 7 - From the A41 Service Station looking south west towards Whitelands Farm.



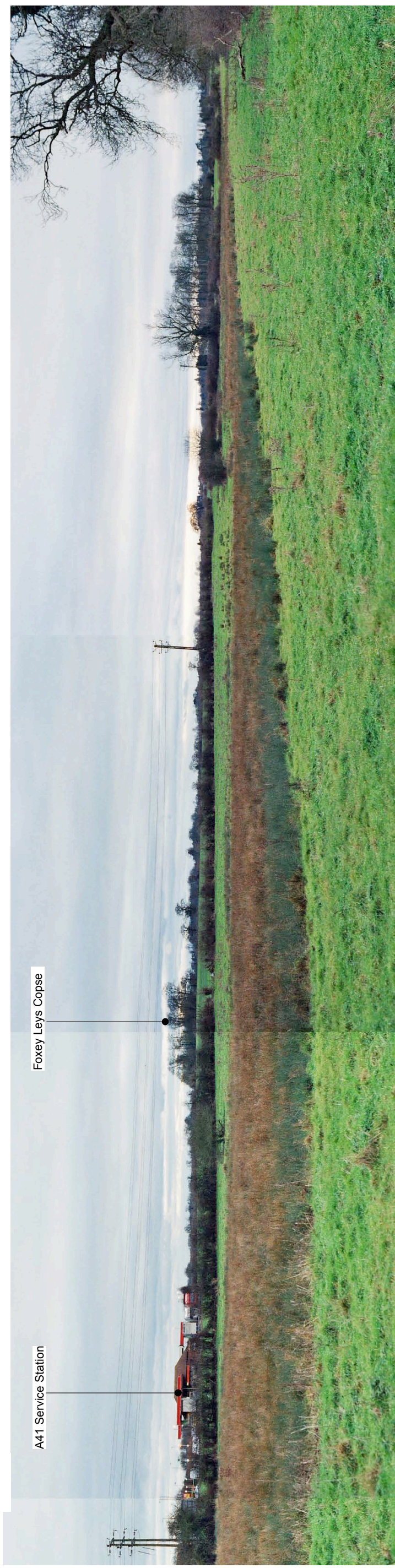
Summer
View 7 - From the A41 Service Station looking south west towards Whitelands Farm.



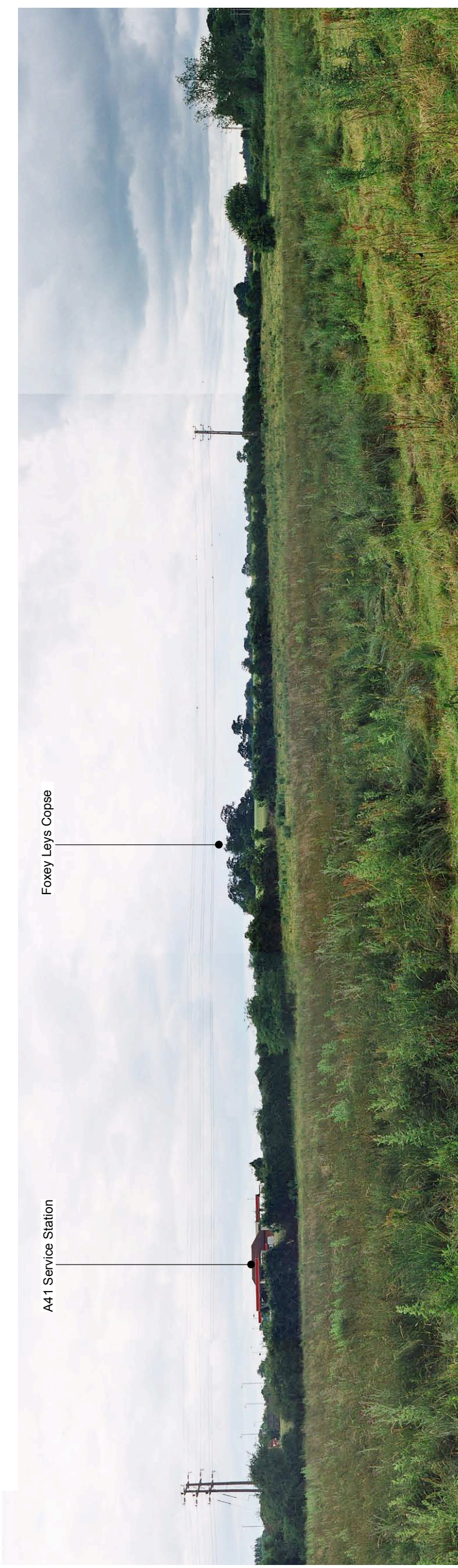
Winter
View 8 - From Alchester Road looking across Chesterton School looking north towards the site.



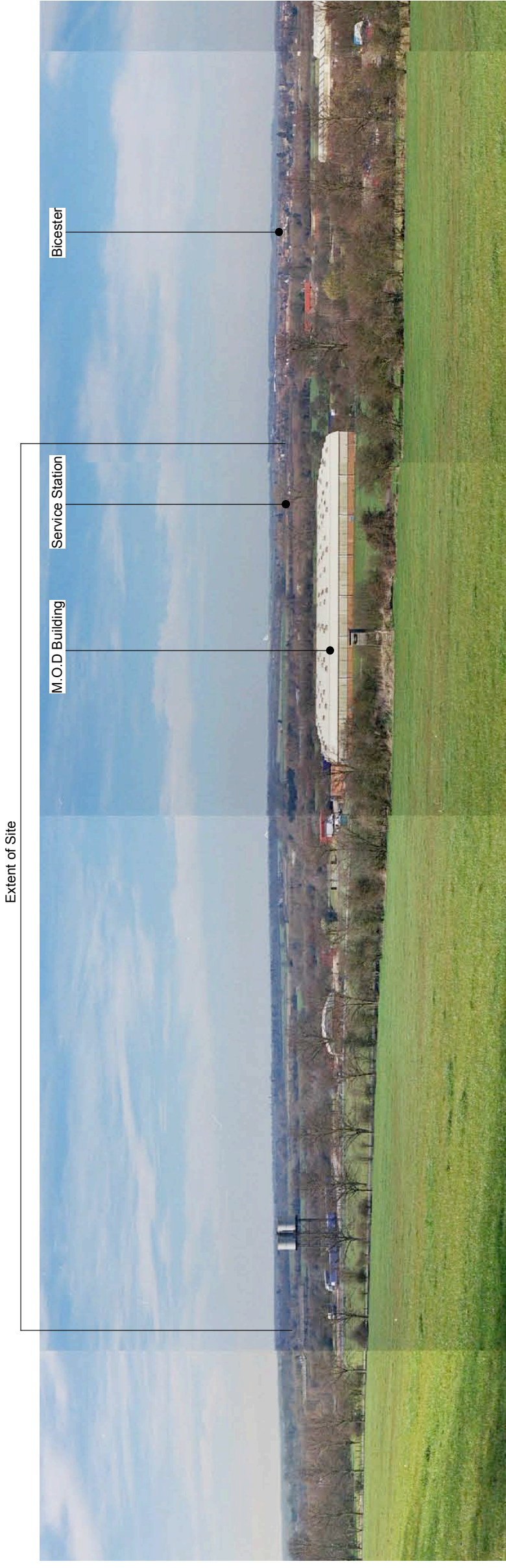
Winter
View 9 - View from overbridge on M40 looking south east towards Bignell Park and the site.



Winter
View 10 - From the eastern corner of the site looking south west across Pingle Brook, towards Whitelands Farm and the service station.



Summer
View 10 - From the eastern corner of the site looking south west across Pingle Brook, towards Whitelands Farm and the service station.



Winter
View 11 - From Graven Hill looking north west towards the site and Bicester.

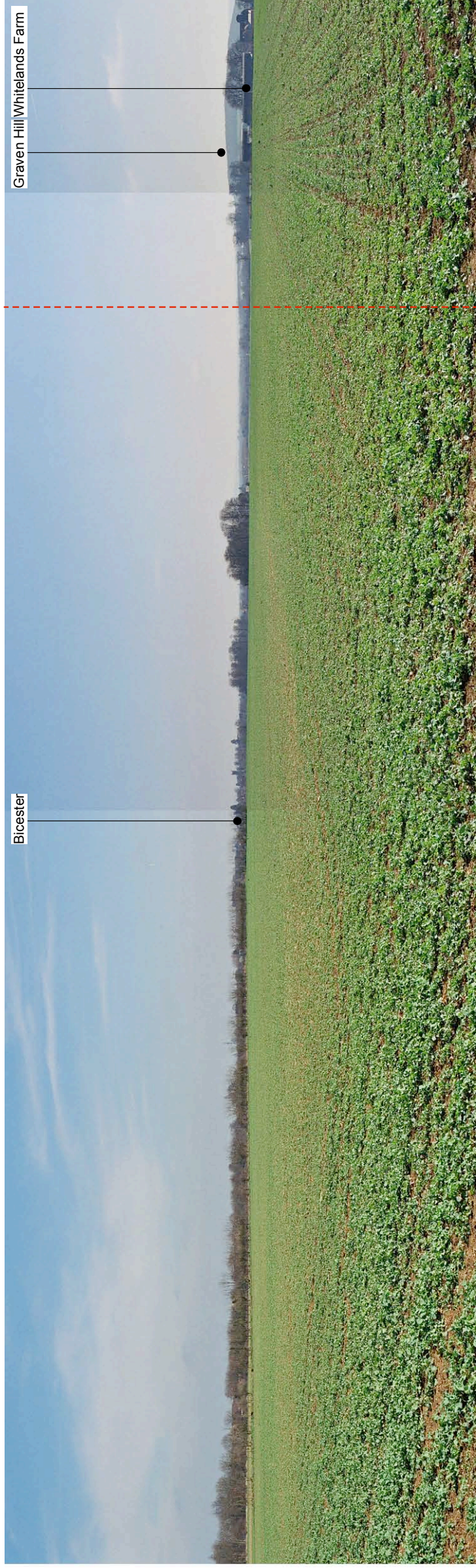


Winter
View 12 - From pavement on Kings End, looking south west towards one edge of the site.

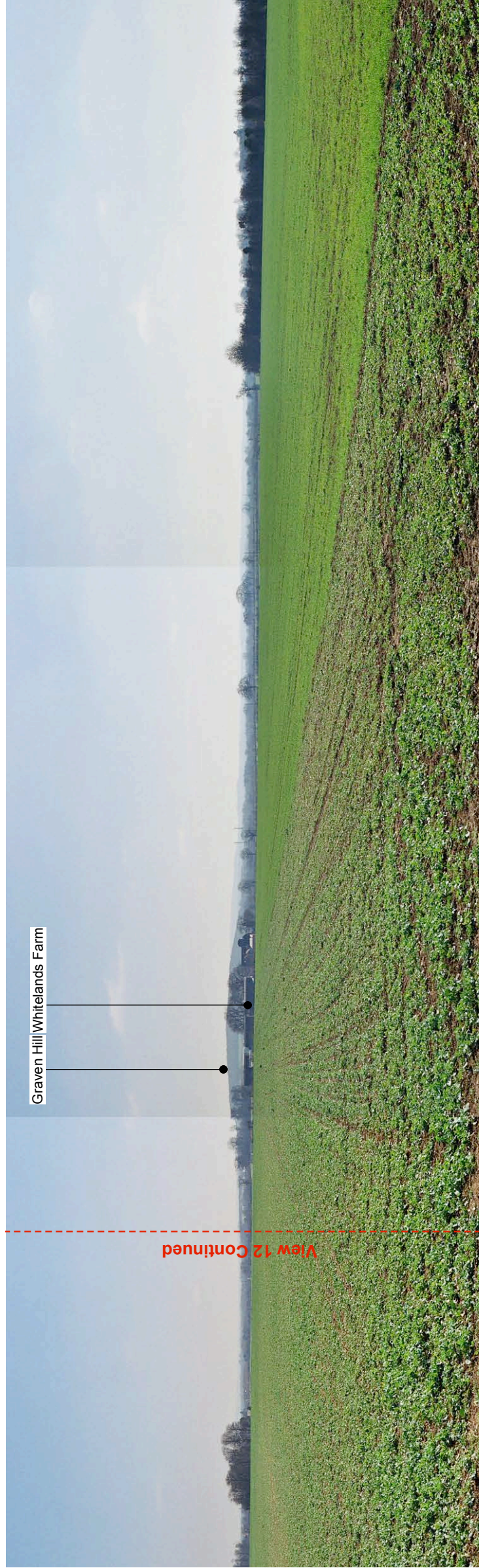


Summer
View 13 - From the western boundary of the site adjacent to the A4095 looking east towards Whitelands Farm





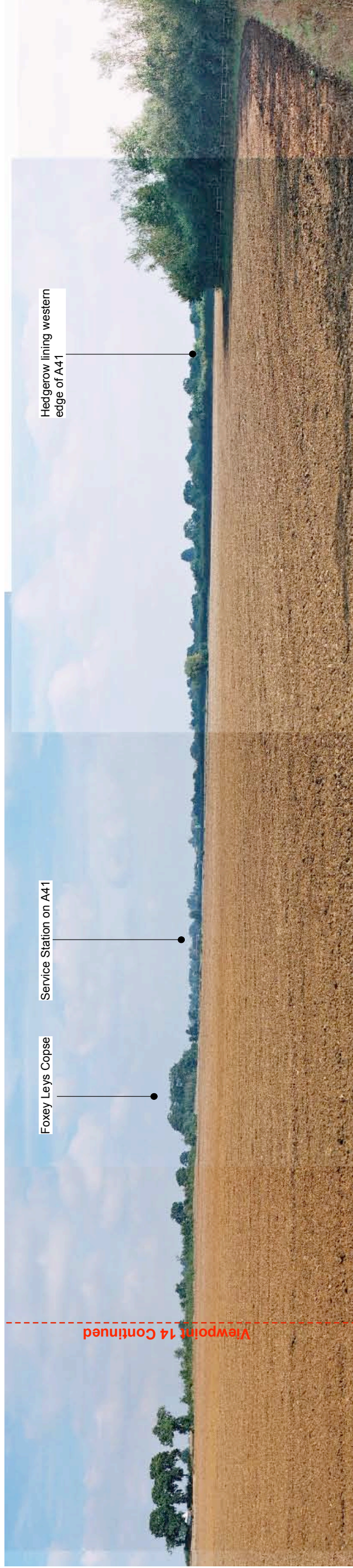
Winter
View 13 - From the western boundary of the site adjacent to the A4095 looking east towards Whitelands Farm and Bicester.

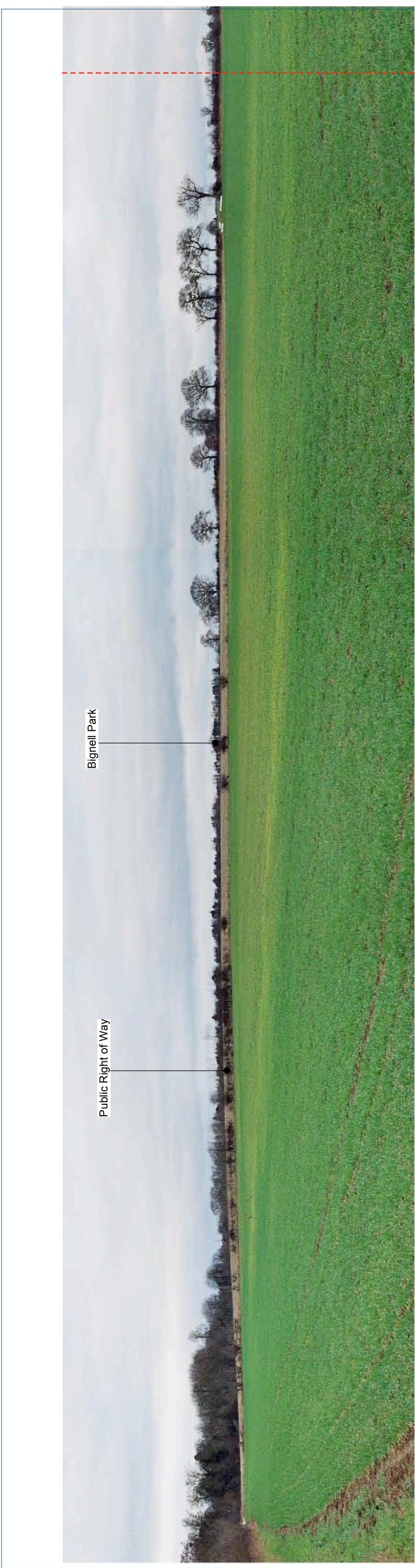


Winter
View 13 - Continued from the western boundary of site adjacent to the A4095 looking east towards Whitelands Farm and Graven Hill.



Summer
View 14 - Panoramic view from southern boundary of the site looking west & north towards Whitelands Farm and Bicester.





Winter

View 14 - From southern boundary of the site looking west & north towards Whitelands Farm and Bicester.

