



Winter

View 10 - From the eastern corner of the site looking south west across Pingle Brook, towards Whitelands Farm and the service station.



Summer

View 10 - From the eastern corner of the site looking south west across Pingle Brook, towards Whitelands Farm and the service station.



Winter
View 11 - From Graven Hill looking north west towards the site and Bicester.



Winter
View 12 - From pavement on Kings End, looking south west towards one edge of the site.



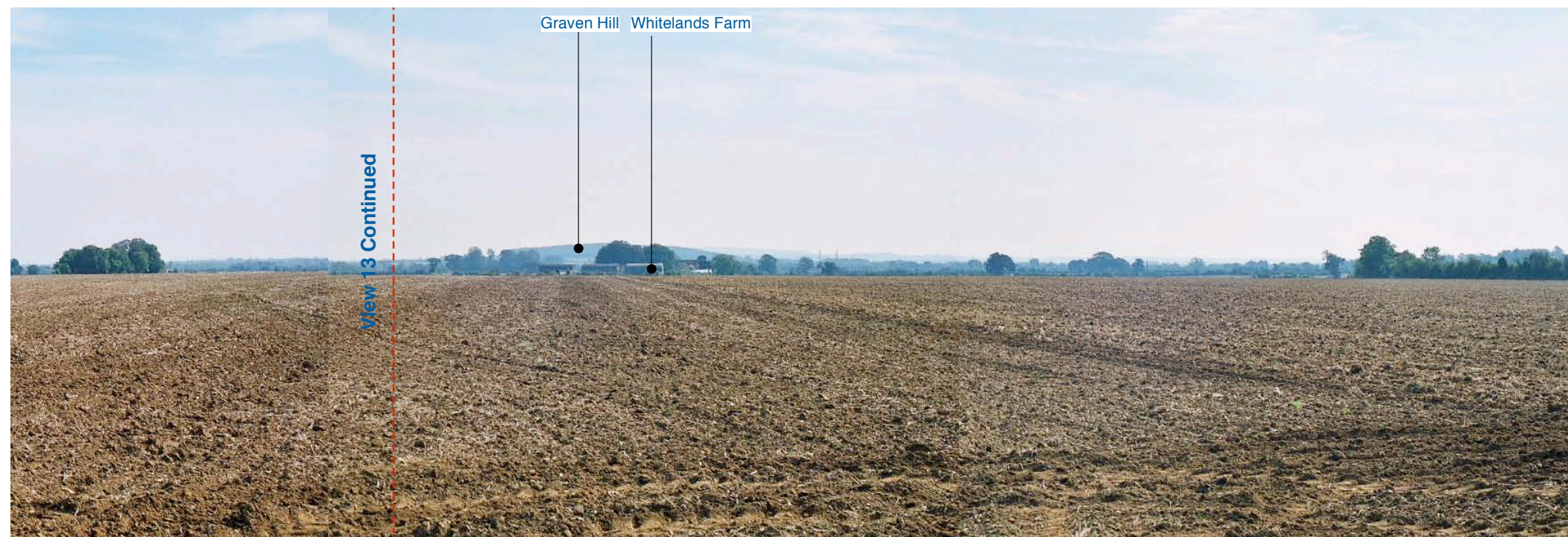
Winter
View 13 - From the western boundary of the site adjacent to the A4095 looking east towards Whitelands Farm and Bicester.



Winter
View 13 - Continued from the western boundary of site adjacent to the A4095 looking east towards Whitelands Farm and Graven Hill.



Summer
View 13 - From the western boundary of the site adjacent to the A4095 looking east towards Whitelands Farm





Winter

View 14 - From southern boundary of the site looking west & north towards Whitelands Farm and Bicester.





Summer

View 14 - Panoramic view from southern boundary of the site looking west & north towards Whitelands Farm and Bicester.



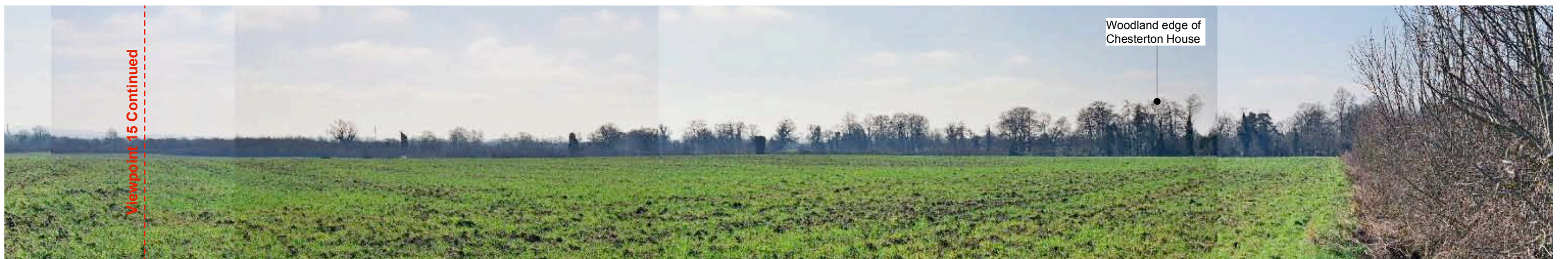


Winter

View 15 - Panoramic view from central location within the site.



Viewpoint 15 Continued



Viewpoint 15 Continued



Summer
View 15 - Panoramic view from central location within the site.





Winter

View 16 - From the southern edge of Bicester town looking south west towards the site.



Summer

View 16 - From the southern edge of Bicester town looking southwest towards the site.



Winter

View 17 - Panoramic view from the farm track leading to Whitelands Farm.





Hedgerow & ditch along the A4095

Bignell Park

Winter
View 18 - From A4095 looking south east towards the site.



Hedgerow & ditch along the A4095

Bignell Park

Summer
View 18 - From A4095 looking south east towards the site.