





Winter

View 1 - From the flyover on the A41 near junction to Chesterton looking north across the site towards Bicester.



Summer

View 1 - From the flyover on the A41 near junction to Chesterton looking north across the site towards Bicester.



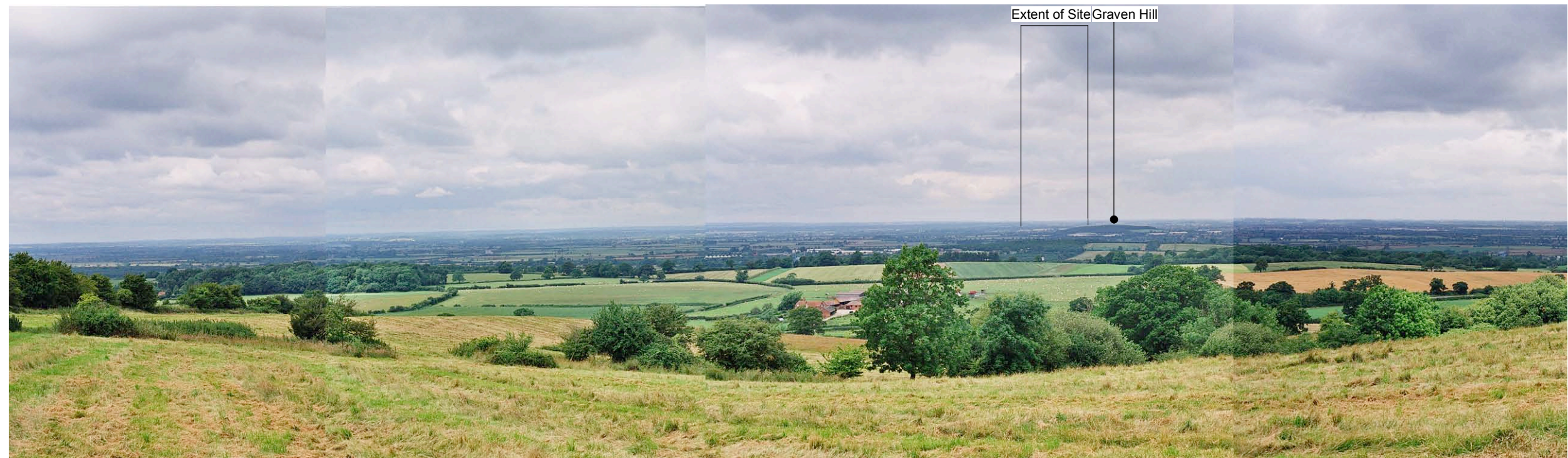
Winter
View 2 - From the A4095 looking south west towards the junction with B4030 and north western corner of the site.



Summer
View 2 - From the A4095 looking south west towards the junction with B4030 and north western corner of the site.



Winter
View 3 - From Public Right of Way south of Middle Farm on Muswell Hill looking north west towards the site and Bicester.



Summer
View 3 - From Public Right of Way south of Middle Farm on Muswell Hill looking north west towards the site and Bicester.



Winter

View 4 - View looking north west towards the site and Bicester from Public Right of Way south of Gardener's Barn in Horton-Cum-Studley.



Summer

View 4 - View looking north west towards the site and Bicester from Public Right of Way south of Gardener's Barn in Horton-Cum-Studley.



Winter

View 5 - Panoramic view from Public Right of Way looking towards Whitelands Farm & Chesterton.





Summer

View 5 - Panoramic view from Public Right of Way looking towards Whitelands Farm & Chesterton.





Winter

View 6 - Panoramic view from the southern boundary of the site by lay-by looking north towards Whitelands Farm and Bicester.





Summer
View 6 - Panoramic view from the southern boundary of the site by lay-by looking north towards Whitelands Farm and Bicester.





Winter
View 7 - From the A41 Service Station looking south west towards Whitelands Farm.



Summer
View 7 - From the A41 Service Station looking south west towards Whitelands Farm.



Winter

View 8 - From Alchester Road looking across Chesterton School looking north towards the site.



Winter

View 9 - View from overbridge on M40 looking south east towards Bignell Park and the site.