

REPRODUCED FROM THE
 ORDNANCE SURVEY MAP WITH
 THE PERMISSION OF THE
 CONTROLLER OF HER MAJESTY'S
 STATIONERY OFFICE. LICENCE
 NO. 100016037. CROWN
 COPYRIGHT RESERVED.

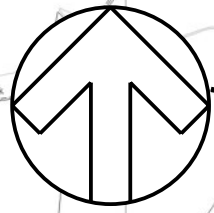
TITLE:

SITE LOCATION

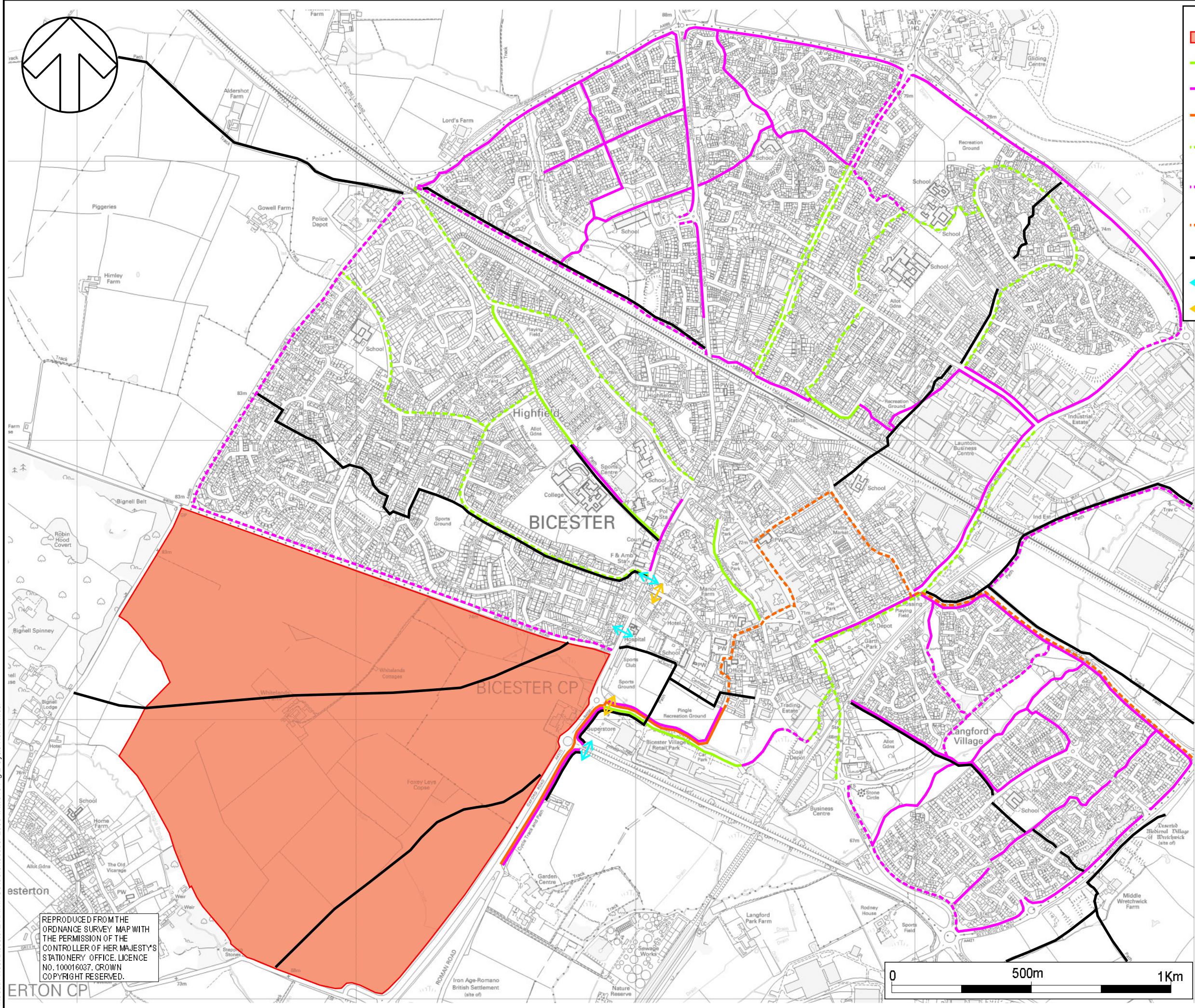
FIGURE No:

1

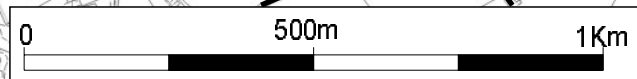




- KEY**
- EXTENT OF LAND OWNERSHIP
 - ON STREET CYCLE ROUTE
 - OFF STREET CYCLE TRACK
 - NATIONAL CYCLE TRACK
 - FUTURE ON STREET CYCLE LANES
 - FUTURE OFF STREET CYCLE TRACK
 - FUTURE NATIONAL CYCLE TRACK
 - PUBLIC RIGHT OF WAY
 - CONTROLLED CROSSING
 - UNCONTROLLED CROSSING



REPRODUCED FROM THE
ORDNANCE SURVEY MAP WITH
THE PERMISSION OF THE
CONTROLLER OF HER MAJESTY'S
STATIONERY OFFICE. LICENCE
NO. 100016037. CROWN
COPYRIGHT RESERVED.



TITLE:
**EXISTING PEDESTRIAN
AND CYCLE NETWORK**

FIGURE No: **2**

N:\South West Bicester\DRAWINGS\CS\10\October 2006 TA1\1546-Fig 2-Cycle Network.cdr