

Planting Schedule

Trees - *Singular specimens located as per planting plan

No.	Abb.	Botanical Name	Common Name	Height	Specification
19	BET JAC	Betula utilis jacquemontii	White-barked Himalayan Birch	250-300cm	RB :2x :Standard :Clear Stem 175-200cm :4 brks
22	CAR FON	Carpinus betulus 'Frans Fontaine'	Hornbeam 'Frans Fontaine'	250-300cm	RB :2x :Standard :Clear Stem 175-200cm :3 brks
27	PRU WAT	Prunus padus 'Watereri'	Bird Cherry 'Watereri'	250-300cm	RB :2x :Standard :Clear Stem 175-200cm :3 brks
24	PYR CHA	Pyrus calleryana 'Charleslester'	Flowering Pear 'Charleslester'	250-300cm	RB :2x :Standard :Clear Stem 175-200cm :3 brks
31	SOR LUT	Sorbus aria 'Lutescens'	Whitebeam 'Lutescens'	250-300cm	RB :2x :Standard :Clear Stem 175-200cm :3 brks
24	SOR ROC	Sorbus 'Joseph Rock'	Rowan 'Joseph Rock'	250-300cm	RB :2x :Standard :Clear Stem 175-200cm :3 brks

Total :147

Formal Hedging - *Hedgerows planted in double staggered rows at 300mm centres

No.	Abb.	Botanical Name	Common Name	Height	Specification	Total Linear Length
7330	FAG SYL	Fagus sylvatica	Common Beech	125-150cm	B :2x :Feathered :2 brks	1098.9749m

Ornamental Shrubs

No.	Abb.	Botanical Name	Common Name	Height	Specification	Pot Size	Density
195	Sor dig	Sarcococca hookeriana digyna	Sweet Box 'Digyna'	30-40cm	Bushy :9 brks	4L	3/m ²
550	Vib dav	Viburnum davidii	David Viburnum	30-40cm	Bushy :4 brks	5-7.5L	2/m ²
92	Wei Bri	Weigela 'Bristol Ruby'	Weigela 'Bristol Ruby'	40-60cm	Branched :3 brks	2L	3/m ²

Total :837

Herbaceous Planting

No.	Abb.	Botanical Name	Common Name	Specification	Pot Size	Density
555	Ber Pur	Bergenia cordifolia 'Purpurea'	Elphinstone's Ears 'Purpurea'	Full Pot	2L	5/m ²
816	Ger Alb	Geranium macrorrhizum 'Album'	Balkan Geranium 'Album'	Full Pot	3L	4/m ²
445	Mat str	Matteuccia struthiopteris	Shuttlecock Fern	Full Pot	3L	2/m ²

Total :1818

Bulbs - *Planted at 10cm spacings

No.	Abb.	Botanical Name	Common Name	Specification
2090	Hya nsc	Hyacinthoides non-scripta	Common Bluebell	Grade 6/7
1748	Nar Tet	Narcissus 'Tete a Tete'	Daffodil 'Tete a Tete'	Grade 10/12

Total :3826

NTM1-Native Thicket Mix - *Planted at 1m centres

No.	Botanical Name	Common Name	Height	Specification	% Cont.
391	Corylus avellana	Common Hazel	40-60cm	B :1+1 :Transplant - seed raised :Branched :2 brks	20%
196	Cornus sanguinea	Common Dogwood	40-60cm	B :1+1 :Transplant - seed raised :Branched :2 brks	10%
391	Crataegus monogyna	Common Hawthorn	40-60cm	B :1+1 :Transplant - seed raised :Branched :2 brks	10%
196	Crataegus laevigata	Midland Hawthorn	40-60cm	B :1+1 :Transplant - seed raised :Branched :2 brks	10%
196	Ilex aquifolium	Common Holly	40-60cm	150cc min. :1+0 :Seedling :Cell grown	10%
196	Ligustrum vulgare	Common Privet	40-60cm	B :0/1 :Cutting :Branched :2 brks	10%
196	Prunus spinosa	Blackthorn	40-60cm	B :1+1 :Transplant - seed raised :Branched :2 brks	10%
196	Viburnum opulus	Guetter Rose	40-60cm	B :1+1 :Transplant - seed raised :Branched :2 brks	10%

Total :1958

Ornamental Bulb Mix 1 - *Planted at 10 per m2

No.	Botanical Name	Common Name	Height	Specification	% Cont.
322	Hyacinthoides non-scripta	Common Bluebell		Grade 6/7	25%
905	Narcissus 'Tete a Tete'	Daffodil 'Tete a Tete'		Grade 10/12	75%

Total :1207

NSM1-Native Shrub Mix - *Planted at 1m centres

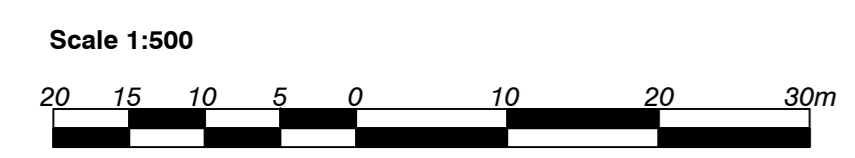
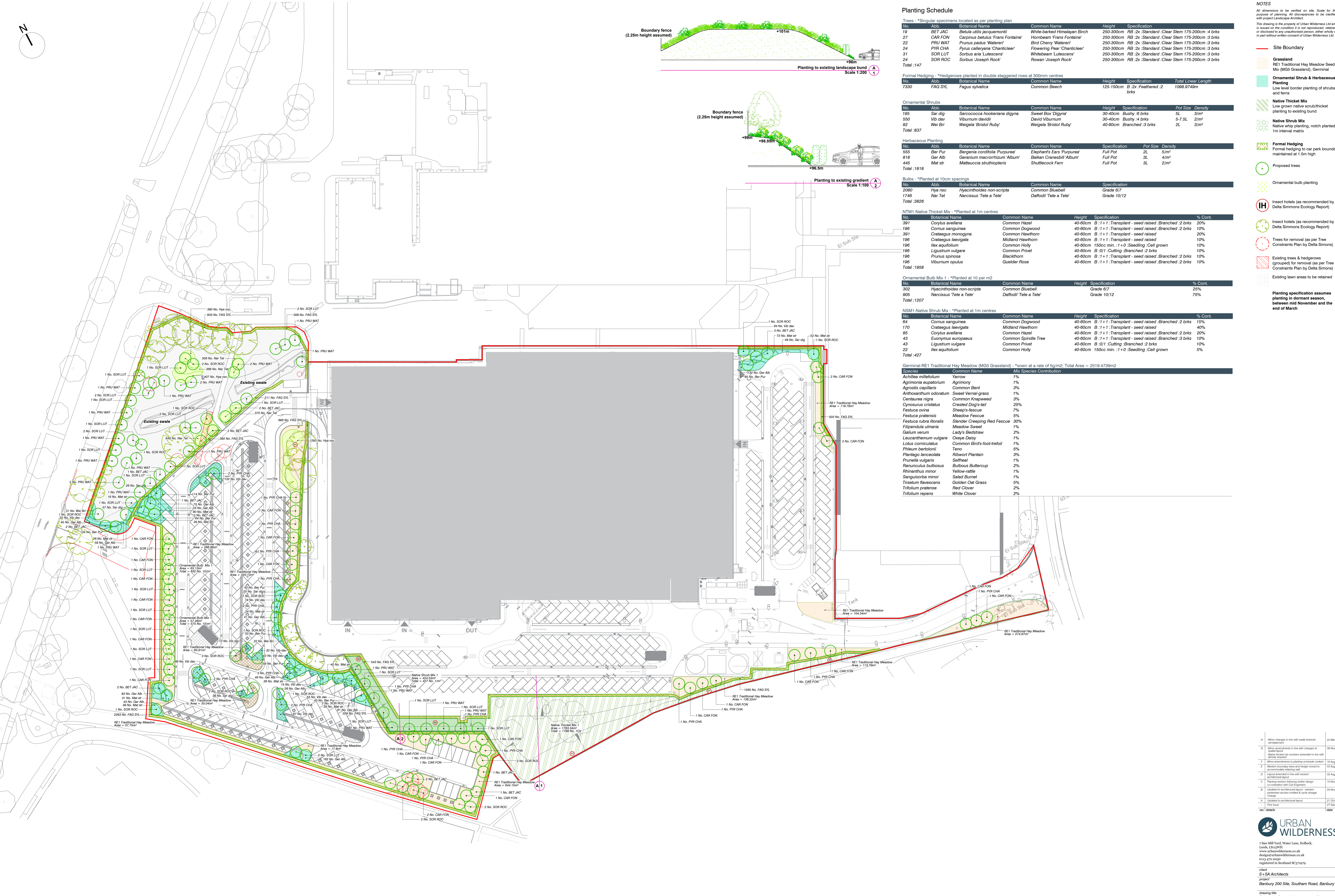
No.	Botanical Name	Common Name	Height	Specification	% Cont.
64	Cornus sanguinea	Common Dogwood	40-60cm	B :1+1 :Transplant - seed raised :Branched :2 brks	15%
170	Crataegus laevigata	Midland Hawthorn	40-60cm	B :1+1 :Transplant - seed raised :Branched :2 brks	40%
85	Corylus avellana	Common Hazel	40-60cm	B :1+1 :Transplant - seed raised :Branched :2 brks	20%
43	Eucorynus europaeus	Common Spindle Tree	40-60cm	B :1+1 :Transplant - seed raised :Branched :3 brks	10%
22	Ligustrum vulgare	Common Privet	40-60cm	B :0/1 :Cutting :Branched :2 brks	10%
43	Ilex aquifolium	Common Holly	40-60cm	150cc min. :1+0 :Seedling :Cell grown	5%

Total :427

Germinel-RE1 Traditional Hay Meadow (MGS Grassland) - *sown at a rate of 5g/m2. Total Area = 2519.4739m2

Species	Common Name	Mix Species Contribution
Achillea millefolium	Yarrow	1%
Agrimonia eupatorium	Agrimony	1%
Agrostis capillaris	Common Bent	3%
Anthoxanthum odoratum	Sweet Vernal-grass	1%
Centaurea nigra	Common Knapweed	3%
Cynosurus cristatus	Crested Dog's-tail	25%
Festuca ovina	Sheep's-fescue	7%
Festuca pratensis	Meadow Fescue	5%
Festuca rubra lateralis	Slender Creeping Red Fescue	30%
Filipendula ulmaria	Meadow Sweet	1%
Galium verum	Lady's Bedstraw	2%
Leucanthemum vulgare	Oxeye Daisy	1%
Lotus corniculatus	Common Bird's-foot-trefoil	1%
Phleum pratense	Timo	5%
Plantago lanceolata	Ribwort Plantain	3%
Prunella vulgaris	Selfheal	1%
Ranunculus bulbosus	Bulbous Buttercup	2%
Rhinanthus minor	Yellow-rattle	1%
Sanguisorba minor	Salted Burnet	1%
Tarsetum flavescens	Golden Oat Grass	5%
Tritolium pratense	Red Clover	2%
Tritolium repens	White Clover	2%

- NOTES**
- All dimensions to be verified on site. Scale for the purpose of planting. All discrepancies to be clarified with project landscape architect.
- This drawing is the property of Urban Wilderness Ltd and is issued on the condition it is not reproduced, altered or disclosed to any unauthorised person, either wholly or in part without written consent of Urban Wilderness Ltd.
- Site Boundary
 - Grassland
 - RE1 Traditional Hay Meadow Seed Mix (MGS Grassland), Germinel
 - Ornamental Shrub & Herbaceous Planting
 - Low level border planting of shrubs and ferns
 - Native Thicket Mix
 - Low grown native scrub/thicket planting to existing bund
 - Native Shrub Mix
 - Native whip planting, notch planted at 1m interval matrix
 - Formal Hedging
 - Formal hedging to car park boundary, maintained at 1.5m high
 - Proposed trees
 - Ornamental bulb planting
 - Insect hotels (as recommended by Delta Simmons Ecology Report)
 - Insect hotels (as recommended by Delta Simmons Ecology Report)
 - Trees for removal (as per Tree Constraints Plan by Delta Simmons)
 - Existing trees & hedgerows (grouped) for removal (as per Tree Constraints Plan by Delta Simmons)
 - Existing lawn areas to be retained
- Planting specification assumes planting in dormant season, between mid November and the end of March



Rev	Description	Date
H	Minor changes in line with issue breakdown	22 Mar 24
G	Minor amendments in line with changes to layout	08 Nov 23
F	Minor amendments to planting schedule content	16 Aug 23
E	Western boundary stone and hedge moved to accommodate existing wall	03 Aug 23
D	Layout amendment in line with revised architectural layout	02 Aug 23
C	Planting schedule following further design coordination with Civil Engineer	10 Nov 21
B	Updated to architectural layout - western boundary stone moved & apple storage change	04 Nov 21
A	Updated to architectural layout	31 Oct 21
-	First issue	27 Sep 21
rev	details	date

URBAN WILDERNESS

7 Saw Mill Yard, Water Lane, Holbeck, Leeds, LS15 5WH
 www.urbanwilderness.co.uk
 design@urbanwilderness.co.uk
 0113 272 0999
 registered in Scotland SC219579

client: S+SA Architects
 project: Banbury 200 Site, Southam Road, Banbury

drawing title: Softworks General Arrangement Plan

drawing status: TENDER
 drawn by: LJM
 checked by: TBR
 date: 27 Sep 21
 scale: 1:500
 paper size: A0
 job/dwg no.: 388-UW-T-001
 rev.:
 H