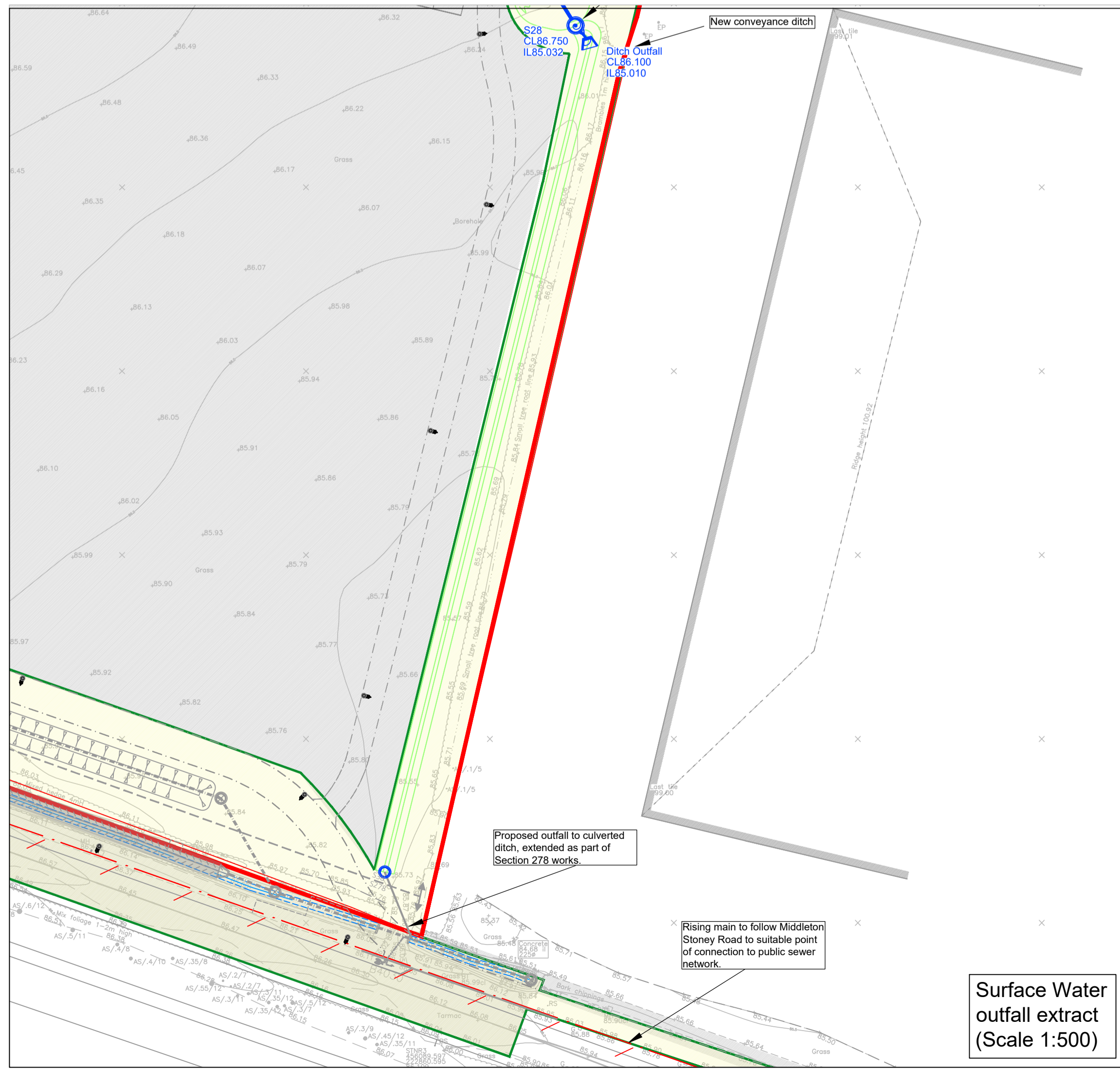
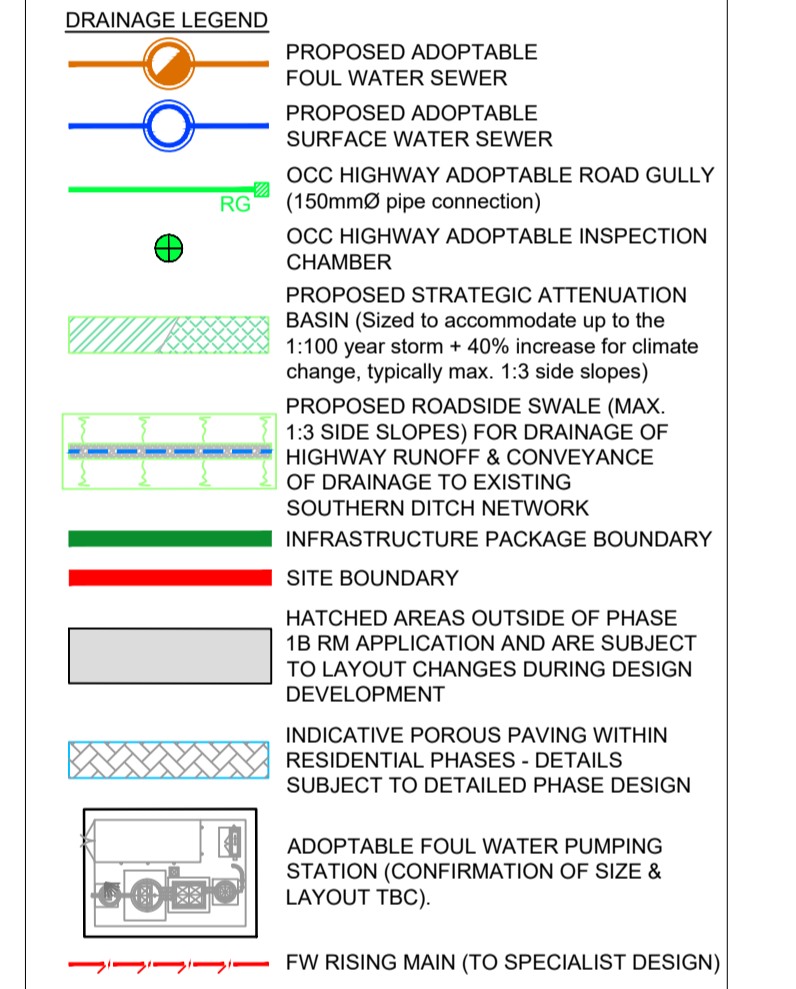


- General Drainage Notes:**
- The planning, design and construction of sewers shall be in accordance with Sewers Sector Guidance Appendix C; Design and Construction Guidance, the Civil Engineering Specification for the Water Industry 7th Edition and Thames Water amendments to CESWI.
 - All adoptable sewers within adoptable highway with less than 1.2m cover to have reinforced concrete slab protection. All adoptable sewers within grassed areas with cover less than 0.9m to have reinforced concrete slab protection. All areas with greater cover than the minimum required to have type S bed and surround.
 - Sealed and lockable covers to be supplied where specified on manhole schedule.
 - Use of this drawing does not absolve the client from his responsibilities under the Health and Safety: The Construction Design and Management Regulations 2015. The Principal Designer is required to contact Hydrock Consultants prior to permitting this drawing to be used in connection with any construction works.
 - All private drainage to comply with current Building Regulations, BS EN-752 Drain and Sewer systems outside Buildings and other relevant British Standards and Codes of Practices.
 - All sewers to be laid soffit to soffit unless otherwise shown.
 - It is the Contractors responsibility to locate existing services on site accurately.
 - The Contractor should comply with high 47 'Avoiding Danger from Underground Services' when excavating around existing services.
 - The Contractor is to verify the line, level and diameter of existing sewers before commencing drainage works.
 - All levels are to OS datum.
 - Compliance with Health & Safety matters on any trench/manhole is obligatory and a permit to enter a confined space is required when connecting site drainage to the existing public sewerage system. A permit to enter a confined space will be obtained from Thames Water Ltd prior to the works commencing on any public sewerage system.
 - Proposed adoptable sewers are only permitted to have other sewerage connections and other services laid at an angle of between 45° and 90° across the line with a vertical clearance in excess of 300mm.
 - Where sewers are to be constructed inside the restricted tree root zone a suitable tree root protection barrier is to be installed to Thames's specification.
 - All svp and rwp positions shown are approximate only. For construction of svp's and rwp's refer to architects detailed construction drawings. Any discrepancies to be reported to the engineer prior to construction.
 - All private pipework shown is 100mmØ unless otherwise indicated.
 - Refer to Section 104 drawing for a full set of construction specification notes.



REVISIONS

| Rev | Date | Description | By | Ckd | App |
|-----|----------|--|----|-----|-----|
| P05 | 15/03/24 | Amended to suit new phase 2A layout | BT | JAC | - |
| P04 | 19/01/24 | Amended to suit updated layout & Cala comments | BT | RA | - |
| P03 | 19/01/24 | Amended to suit updated layout | BT | JAC | RA |
| P02 | 31/05/23 | Issued for planning | BT | RA | RA |
| P01 | 06/04/23 | First issue | BT | RA | RA |

Hydrock
 OVER COURT BARN
 OVER LANE
 ALMONDSBURY
 BRISTOL
 BS32 4DF
 T: +44 (0) 1454 619533
 e: bristol@hydrock.com

CLIENT
 CALA HOMES COTSWOLDS LTD

PROJECT
 HIMLEY VILLAGE, BICESTER

TITLE
 PHASE 1B INFRASTRUCTURE DRAINAGE LAYOUT SHEET 4 OF 4

| | |
|---|------------------------------|
| HYDROCK PROJECT NO. C-27141-C | SCALE @ A1 1 : 500 |
| STATUS DESCRIPTION PLANNING | STATUS S2 |
| DRAWING NO. (PROJECT CODE-ORIGINATOR-ZONE-LEVEL-TYPE-ROLE-NUMBER) 27141-HYD-1B-XX-DR-C-2304 | REVISION P05 |

Refer to Surface Water outfall extract for continuation

Surface Water outfall extract (Scale 1:500)