

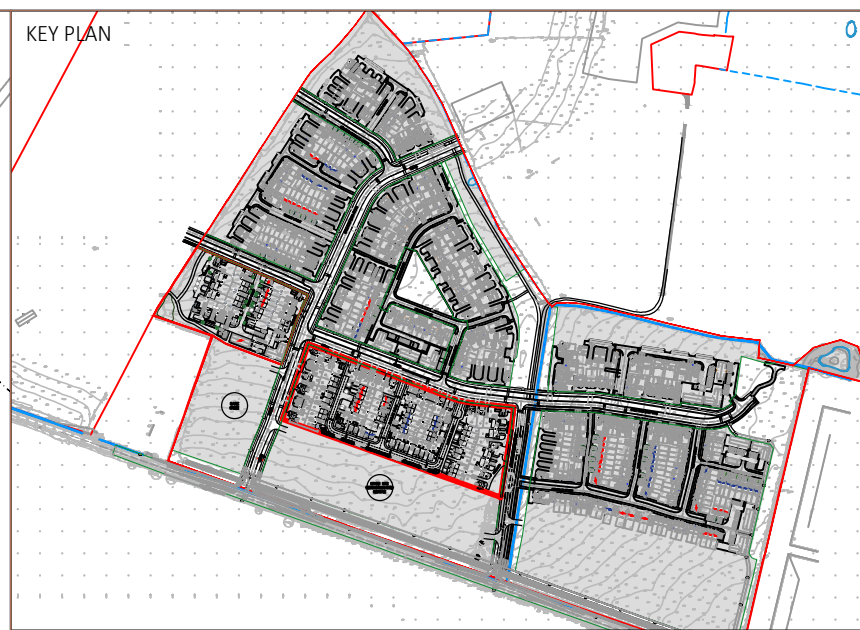


PROPOSED POINT OF CONNECTION TO THAMES WATER FOUL SEWER NETWORK VIA TW MANHOLE REF. 7254; CL: N/A, IL: 78.76 (REFER TO THAMES WATER RECORDS FOR DETAILS)

RISING MAIN CONTINUES ALONG MIDDLETON STONEY ROAD & HOWES LANE. APPROXIMATE ROUTE LENGTH 1750m.

FW RISING MAIN EXTRACT (SCALE 1:5000)

ADOPTABLE FOUL WATER PUMPING STATION. COMPOUND SIZE AND LAYOUT SHOWN INDICATIVELY, TO BE PROVIDED BY SUPPLIER, AND CONFIRMED BY ADOPTING AUTHORITY.



- General Drainage Notes:
- The planning, design and construction of sewers shall be in accordance with Sewers Sector Guidance Appendix C; Design and Construction Guidance, the Civil Engineering Specification for the Water Industry 7th Edition and Thames Water amendments to CESWI.
  - All adoptable sewers within adoptable highway with less than 1.2m cover to have reinforced concrete slab protection. All adoptable sewers within grassed areas with cover less than 0.5m to have reinforced concrete slab protection. All areas with greater cover than the minimum required to have type S bed and surround.
  - Sealed and lockable covers to be supplied where specified on manhole schedule.
  - Use of this drawing does not absolve the client from his responsibilities under the Health and Safety: The Construction Design and Management Regulations 2015. The Principal Designer is required to contact Hydrock Consultants prior to permitting this drawing to be used in connection with any construction works.
  - All private drainage to comply with current Building Regulations, BS EN-752 Drain and Sewer systems outside Buildings and other relevant British Standards and Codes of Practices.
  - All sewers to be laid soffit to soffit unless otherwise shown.
  - It is the Contractors responsibility to locate existing services on site accurately.
  - The Contractor should comply with hsg147 'Avoiding Danger from Underground Services' when excavating around existing services.
  - The Contractor is to verify the line, level and diameter of existing sewers before commencing drainage works.
  - All levels are to OS datum.
  - Compliance with Health & Safety matters on any trench/manhole is obligatory and a permit to enter a confined space is required when connecting site drainage to the existing public sewerage system. A permit to enter a confined space will be obtained from Thames Water Ltd prior to the works commencing on any public sewerage system.
  - Proposed adoptable sewers are only permitted to have other sewer/gully connections and other services laid at an angle of between 45° and 90° across the line with a vertical clearance in excess of 300mm.
  - Where sewers are to be constructed inside the restricted tree root zone a suitable tree root protection barrier is to be installed to Thames's specification.
  - All svp and rwp positions shown are approximate only. For construction of svp's and rwp's refer to architects detailed construction drawings. Any discrepancies to be reported to the engineer prior to construction.
  - All private pipework shown is 100mmØ unless otherwise indicated.
  - Refer to Section 104 drawing for a full set of construction specification notes.

**DRAINAGE LEGEND**

- PROPOSED ADOPTABLE FOUL WATER SEWER
- PROPOSED ADOPTABLE SURFACE WATER SEWER
- OCC HIGHWAY ADOPTABLE ROAD GULLY (150mmØ pipe connection)
- OCC HIGHWAY ADOPTABLE INSPECTION CHAMBER
- PROPOSED STRATEGIC ATTENUATION BASIN (Sized to accommodate up to the 1:100 year storm + 40% increase for climate change, typically max. 1.3 side slopes)
- PROPOSED ROADSIDE SWALE (MAX. 1:3 SIDE SLOPES) FOR DRAINAGE OF HIGHWAY RUNOFF & CONVEYANCE OF DRAINAGE TO EXISTING SOUTHERN DITCH NETWORK
- INFRASTRUCTURE PACKAGE BOUNDARY
- SITE BOUNDARY
- HATCHED AREAS OUTSIDE OF PHASE 1B RM APPLICATION AND ARE SUBJECT TO LAYOUT CHANGES DURING DESIGN DEVELOPMENT
- INDICATIVE POROUS PAVING WITHIN RESIDENTIAL PHASES - DETAILS SUBJECT TO DETAILED PHASE DESIGN
- ADOPTABLE FOUL WATER PUMPING STATION (CONFIRMATION OF SIZE & LAYOUT TBC)
- FW RISING MAIN (TO SPECIALIST DESIGN)

REVISIONS

Rev	Date	Description	By	Ckd	App
P05	15/03/24	Amended to suit new phase 2A layout	BT	JAC	-
P04	19/01/24	Amended to suit updated layout & Cala comments	BT	RA	-
P03	19/01/24	Amended to suit updated layout	BT	JAC	RA
P02	31/05/23	Issued for planning	BT	RA	RA
P01	06/04/23	First issue	BT	RA	RA

**Hydrock**  
 OVER COURT BARN  
 OVER LANE  
 ALMONDSBURY  
 BRISTOL  
 BS32 4DF  
 T: +44 (0) 1454 619533  
 e: bristol@hydrock.com

CLIENT  
 CALA HOMES COTSWOLDS LTD

PROJECT  
 HIMLEY VILLAGE, BICESTER

TITLE  
 PHASE 1B DRAINAGE LAYOUT OVERVIEW

HYDROCK PROJECT NO. C-27141-C	SCALE @ A1 1 : 1250
STATUS DESCRIPTION INFORMATION	STATUS S2
DRAWING NO. (PROJECT CODE-ORIGINATOR-ZONE-LEVEL-TYPE-ROLE-NUMBER) 27141-HYD-1B-XX-DR-C-2300	REVISION P05

HYDROBRAKE FLOW CONTROL CHAMBER  
 DESIGN FLOW 12.0L/S  
 OUTFALL TO REFORMED DITCH  
 CONSTRUCTED AS PART OF SITE ACCESS / S278 WORKS

HYDROBRAKE FLOW CONTROL CHAMBER  
 DESIGN FLOW 4.0L/S  
 OUTFALL TO NEW CONVEYANCE DITCH (EXISTING DITCH TO BE RE-GRADED)

HYDROBRAKE FLOW CONTROL CHAMBER  
 DESIGN FLOW 3.5L/S  
 OUTFALL TO REFORMED DITCH  
 CONSTRUCTED AS PART OF SITE ACCESS / S278 WORKS

OUTFALL FROM CONVEYANCE DITCH TO NEW CULVERT CONNECTION CONSTRUCTED UNDER SITE ACCESS / S278 WORKS

RISING MAIN ROUTE CONTINUES TO SOUTH-EAST. REFER TO EXTRACT ABOVE FOR CONTINUATION OF ROUTE.

