

Begbroke Science Park

Zones B & C

Oxford University Development LTD

Reserved Matters Submission Design Statement Design Updates Comparison

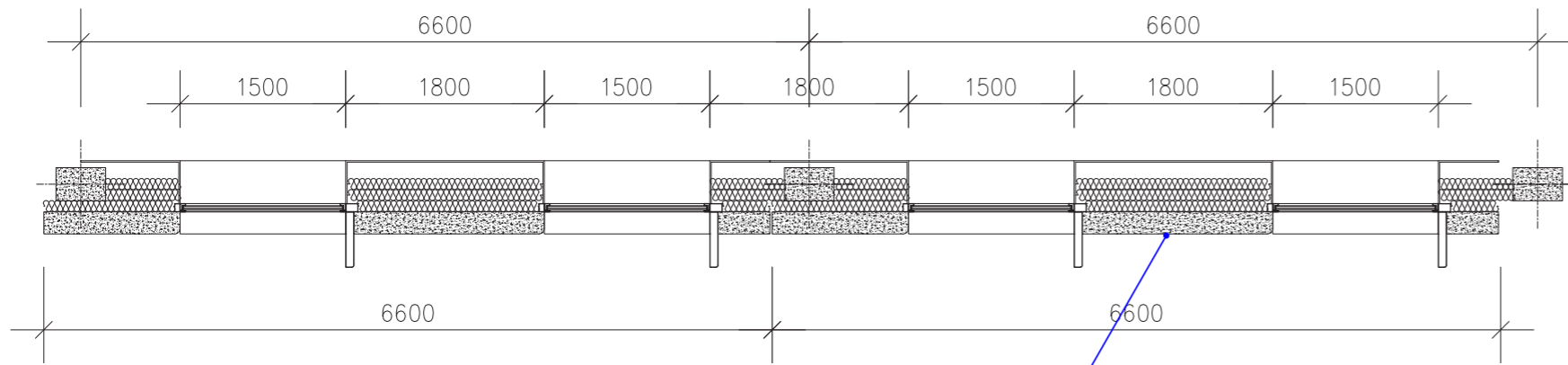
04 November 2022



4.0 Proposed Facade Concept Strategy

Included in RMS Submission 21/03150/REM dated 13th September 2021

Plans and Section of a typical structural bay showing proposed materials.



Opaque Panel:

brick slips mounted onto pre-cast concrete panels



Top Spandrel:

dark grey PPC aluminum + insulation

Vision panel:

clear glass

Shading Fins:

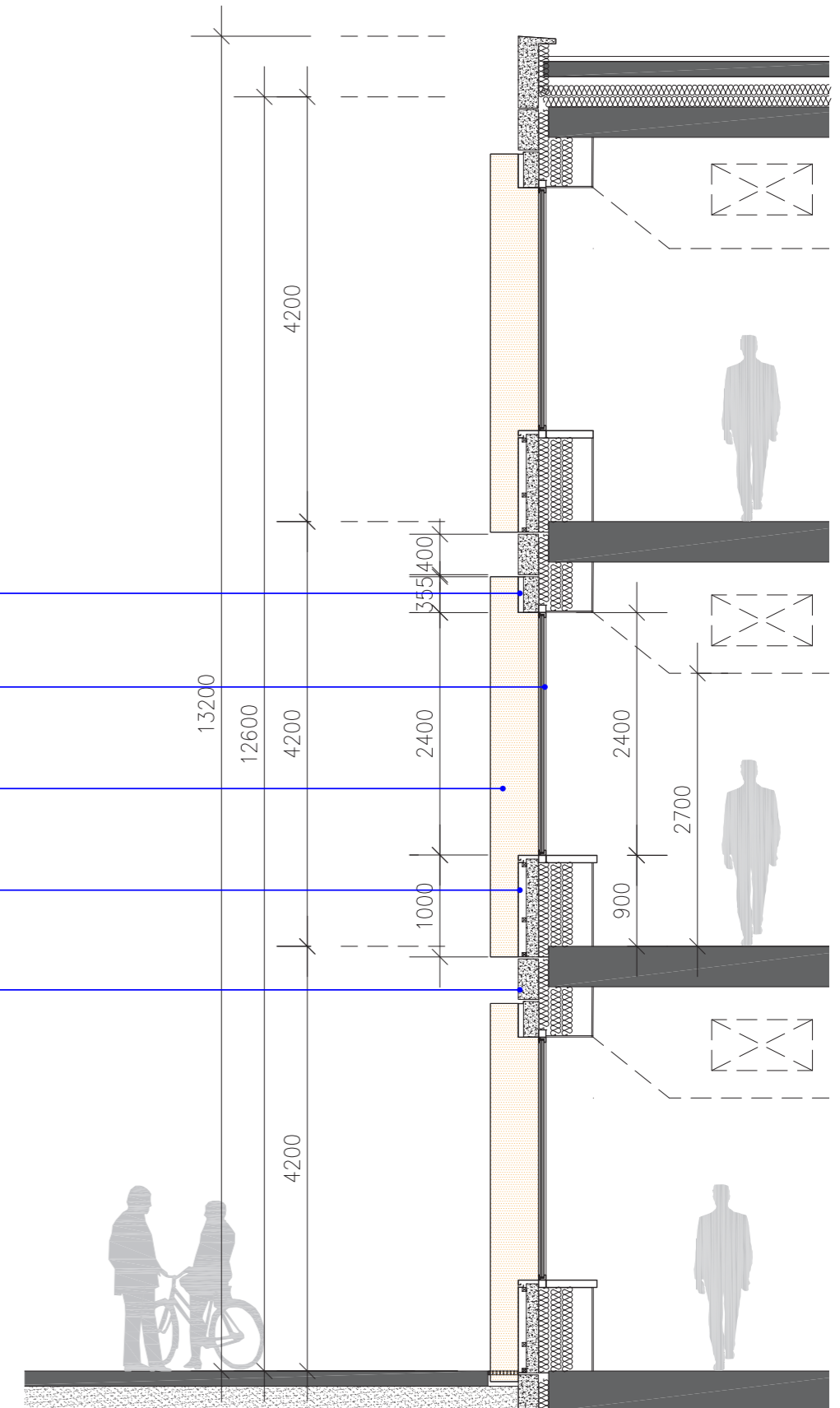
Perforated anodised/PPC aluminium

Bottom Spandrel:

dark grey PPC aluminum + insulation

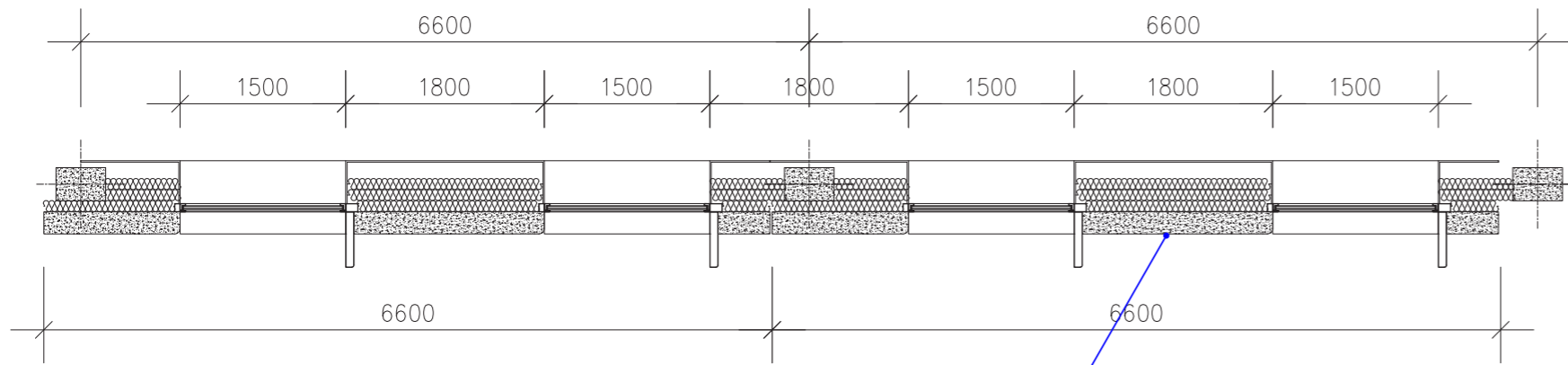
Slab edge panel:

acid etched Pre-cast concrete (re-constituted stone)



4.0 Proposed Facade Concept Strategy - Updated Materials

Plans and Section of a typical structural bay showing proposed materials.



Opaque Panel:
brick slips mounted onto pre-cast concrete panels



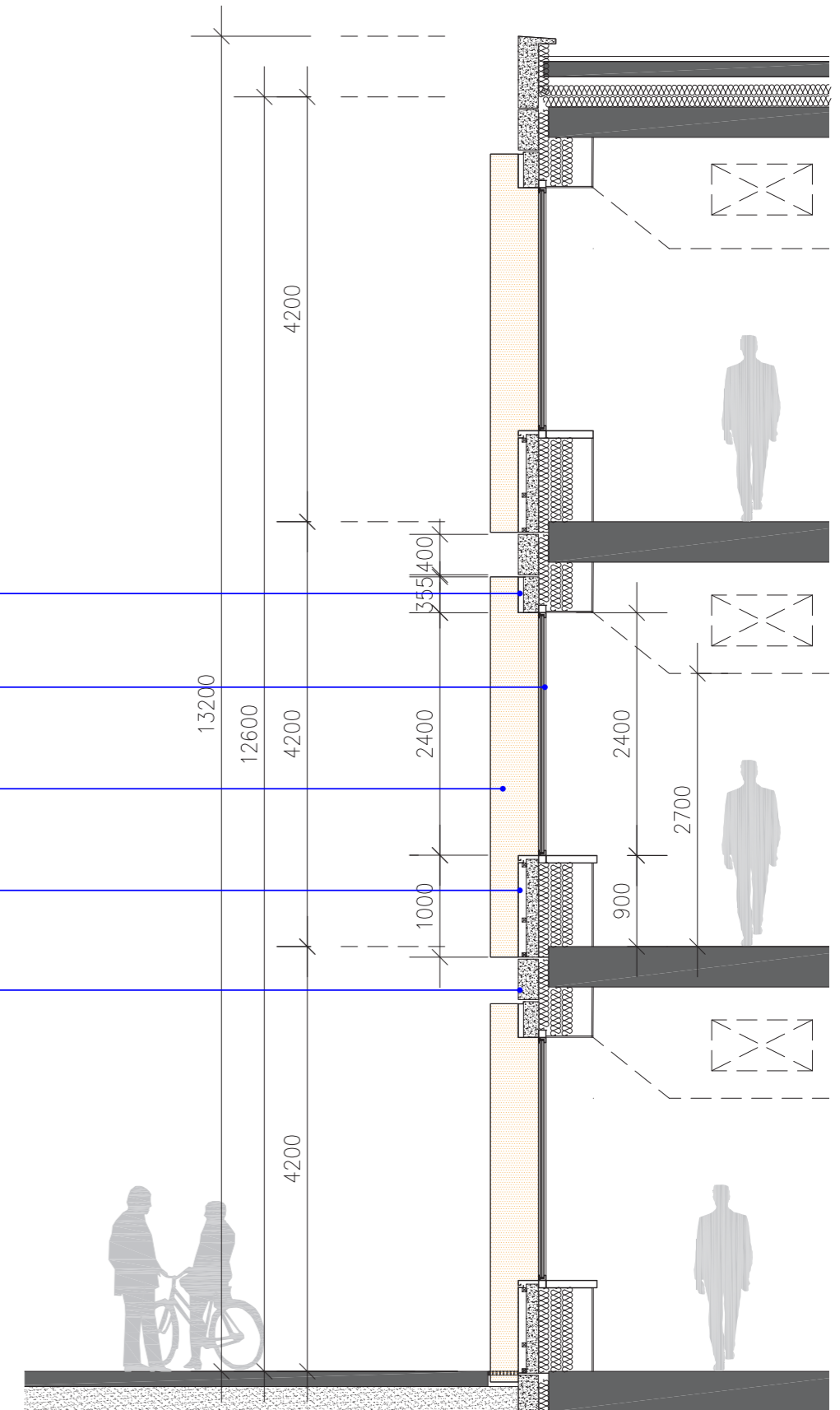
Top Spandrel:
dark grey PPC aluminum + insulation

Vision panel:
clear glass

Shading Fins:
Perforated anodised/PPC aluminium

Bottom Spandrel:
dark grey PPC aluminum + insulation

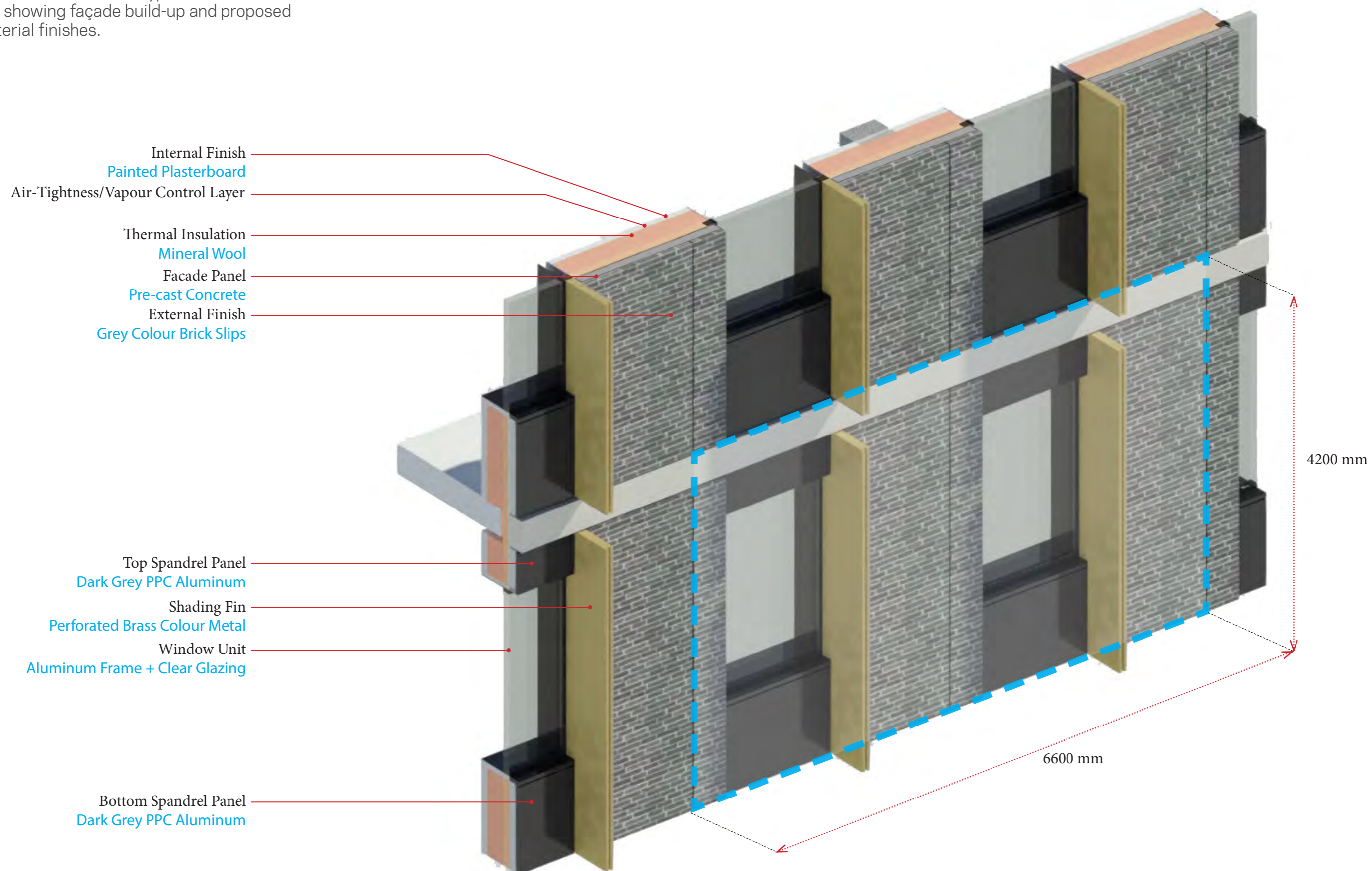
Slab edge panel:
acid etched Pre-cast concrete (re-constituted stone)



4.0 Proposed Façade Concept Strategy

Included in RMS Submission 21/03150/REM dated 13th September 2021

Axonometric view of a typical structural bay showing façade build-up and proposed material finishes.



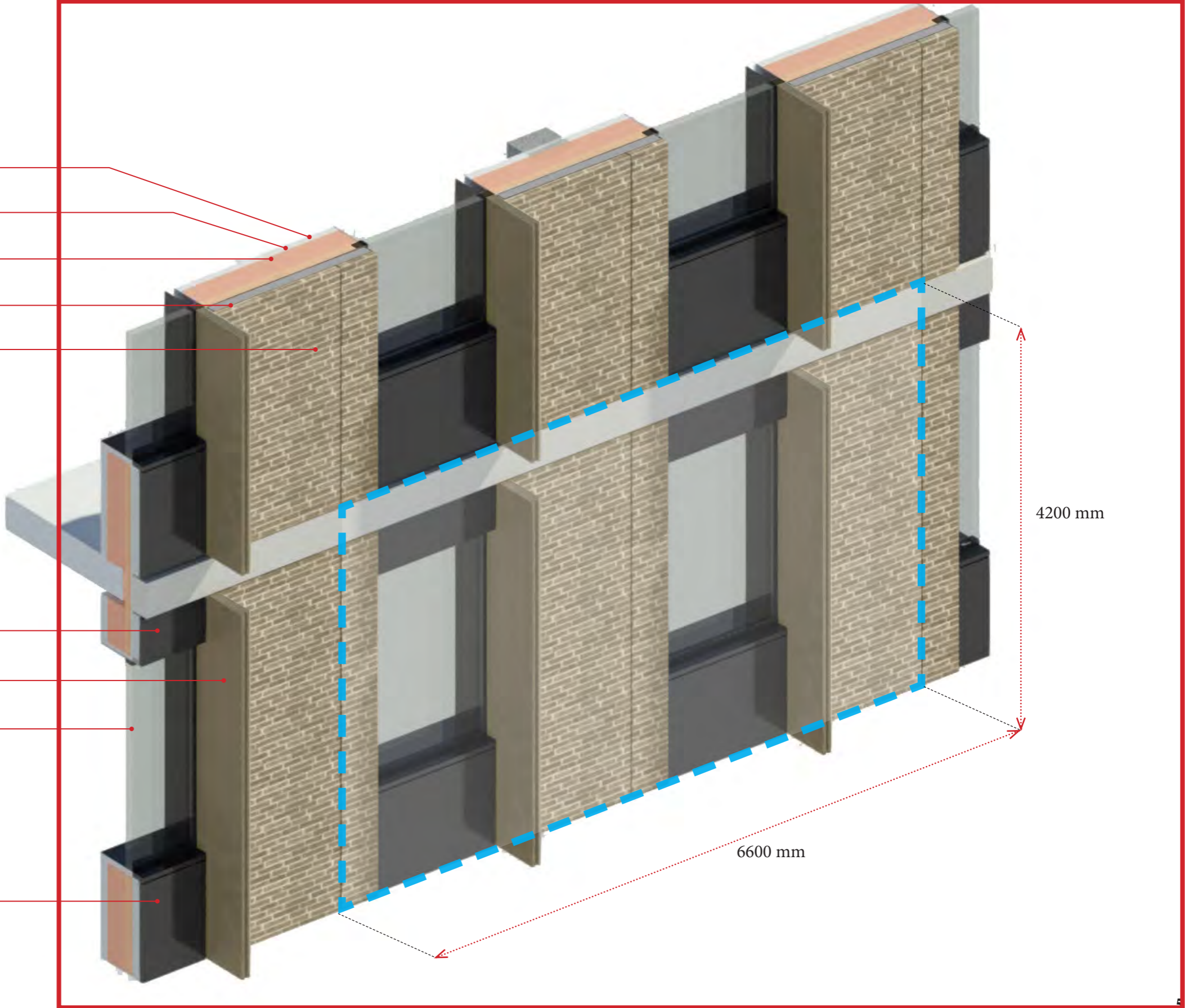
4.0 Proposed Façade Concept Strategy - Updated materials

Axonometric view of a typical structural bay showing façade build-up and proposed material finishes.

- Internal Finish
Painted Plasterboard
- Air-Tightness/Vapour Control Layer
- Thermal Insulation
Mineral Wool
- Facade Panel
Pre-cast Concrete
- External Finish
Buff/Grey Colour Brick Slips

- Top Spandrel Panel
Dark Grey PPC Aluminum
- Shading Fin
Perforated Champagne colour
- Window Unit
Aluminum Frame + Clear Glazing

- Bottom Spandrel Panel
Dark Grey PPC Aluminum

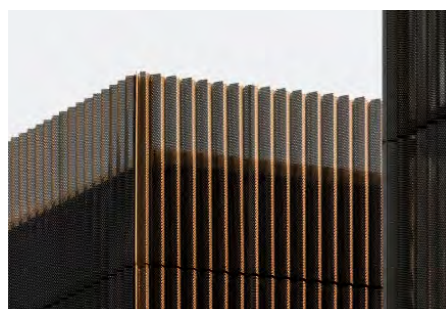


4.0 Proposed Facade Concept Strategy

Included in RMS Submission 21/03150/REM dated 13th September 2021

4.4 Proposed Facade Material Palette

Refer to accompanying elevation drawings for detailed material specification.



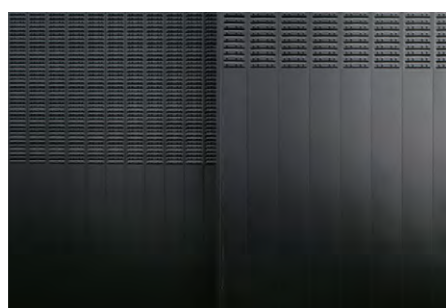
Plant Screen Panels:
perforated undulated PPC metal - dark grey colour



Bricks:
grey colour/blend



Slab Edge:
pre-cast white concrete - acid etched



Spandrels Panels:
PPC aluminum - dark grey colour



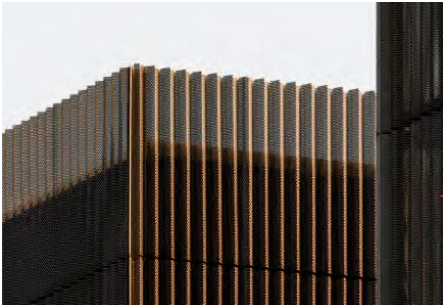
Shading Elements:
Perforated anodized aluminum, brass colour, brushed



4.0 Proposed Facade Concept Strategy - Updated Materials

4.4 Updated Facade Material Palette

Refer to accompanying elevation drawings for detailed material specification.



Plant Screen Panels:
perforated undulated PPC metal - dark grey colour



Bricks:
grey/buff blend



Slab Edge:
pre-cast white concrete - acid etched



Spandrels Panels:
PPC aluminum - dark grey colour



Shading Elements:
Perforated PPC 'champagne' colour

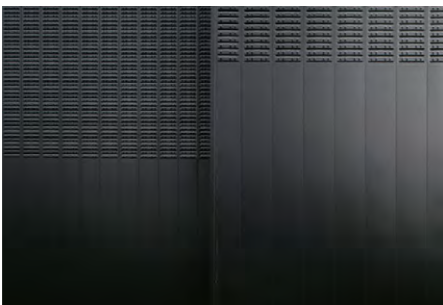
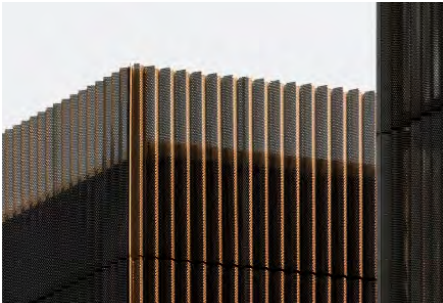


4.0 Proposed Facade Concept Strategy

Included in RMS Submission 21/03150/REM dated 13th September 2021

4.4 Proposed Facades - Commercial Building

Refer to accompanying elevation drawings for detailed material specification.



1 PROPOSED NORTH ELEVATION - COMMERCIAL BUILDING 1:100

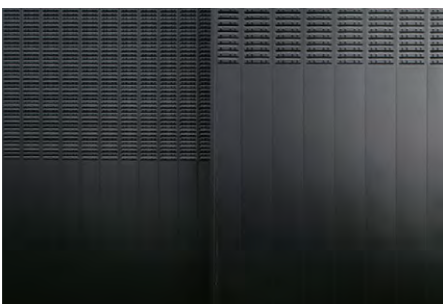
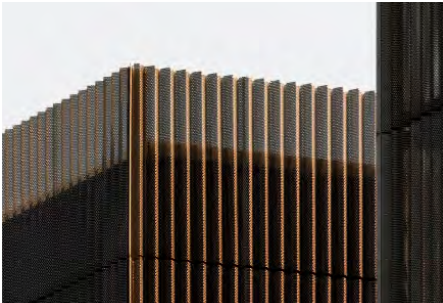


2 PROPOSED SOUTH ELEVATION - COMMERCIAL BUILDING 1:100

4.0 Proposed Facade Concept Strategy - Updated Materials

4.4 Updated Facade Materials - Commercial Building

Refer to accompanying elevation drawings for detailed material specification.



1 PROPOSED NORTH ELEVATION - COMMERCIAL BUILDING 1:100



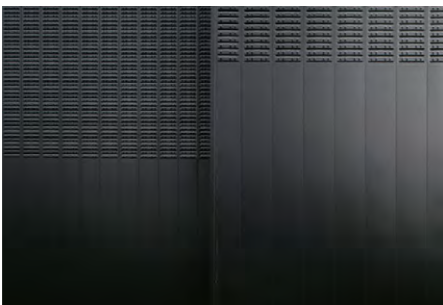
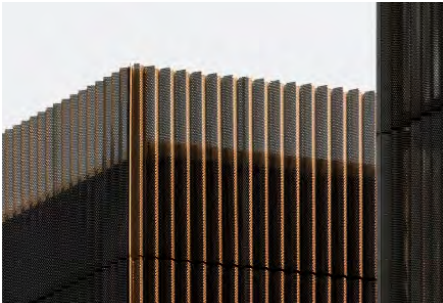
2 PROPOSED SOUTH ELEVATION - COMMERCIAL BUILDING 1:100

4.0 Proposed Facade Concept Strategy

Included in RMS Submission 21/03150/REM dated 13th September 2021

4.4 Proposed Facades - Commercial Building

Refer to accompanying elevation drawings for detailed material specification.



1 PROPOSED EAST ELEVATION - COMMERCIAL BUILDING
1:100



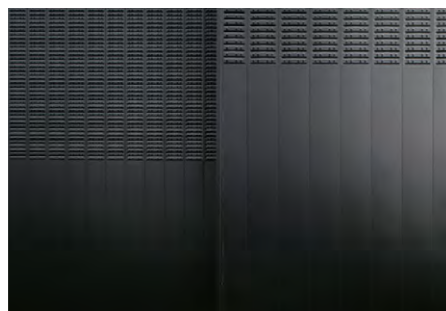
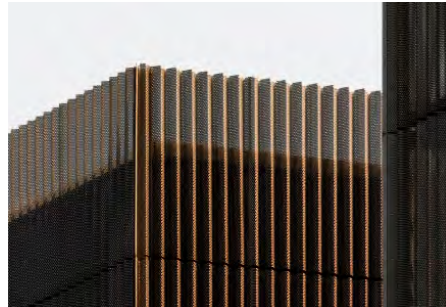
2 PROPOSED WEST ELEVATION - COMMERCIAL BUILDING
1:100



4.0 Proposed Facade Concept Strategy - Updated Materials

4.4 Updated Facade Materials - Commercial Building

Refer to accompanying elevation drawings for detailed material specification.



1 PROPOSED EAST ELEVATION -
COMMERCIAL BUILDING
1:100



2 PROPOSED WEST ELEVATION -
COMMERCIAL BUILDING
1:100



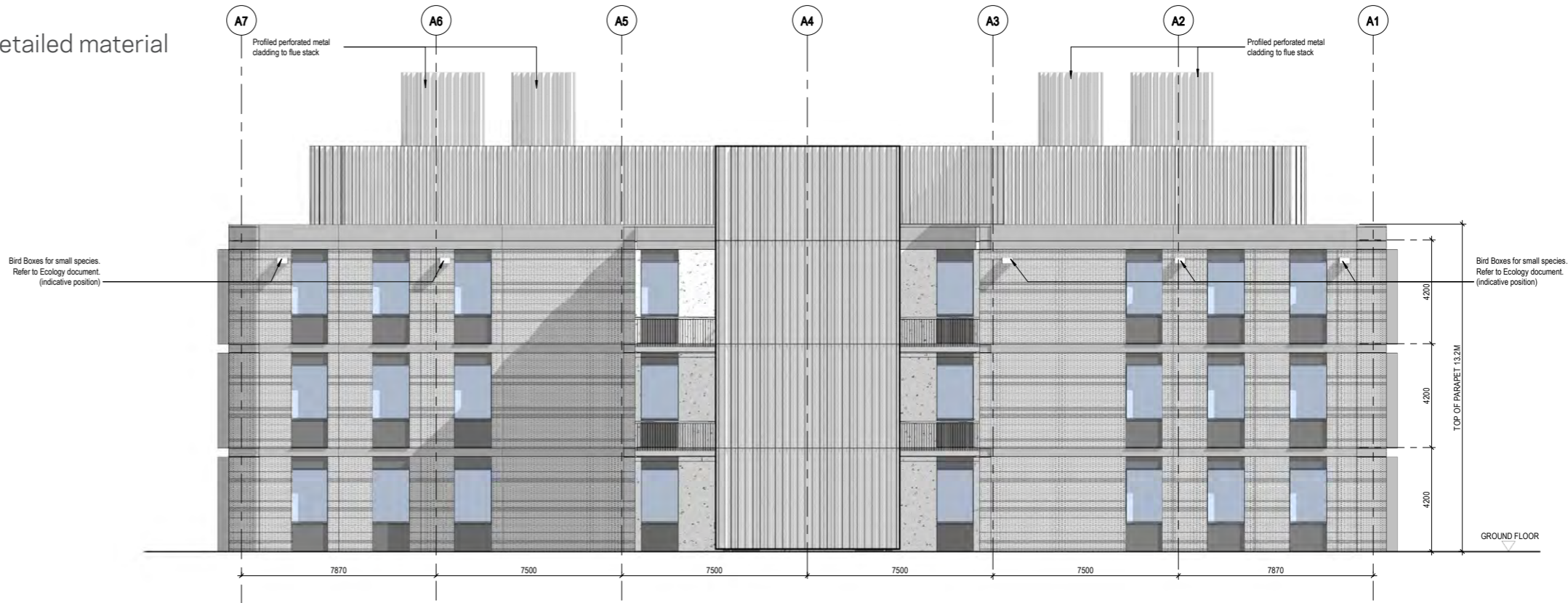
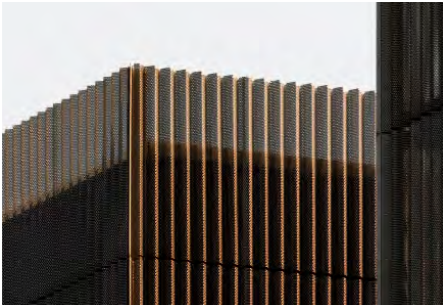
SCALE: 1:100

4.0 Proposed Facade Concept Strategy

Included in RMS Submission 21/03150/REM dated 13th September 2021

4.4 Proposed Facades - Academic Building

Refer to accompanying elevation drawings for detailed material specification.



1 PROPOSED NORTH ELEVATION - ACADEMIC BUILDING
1:100



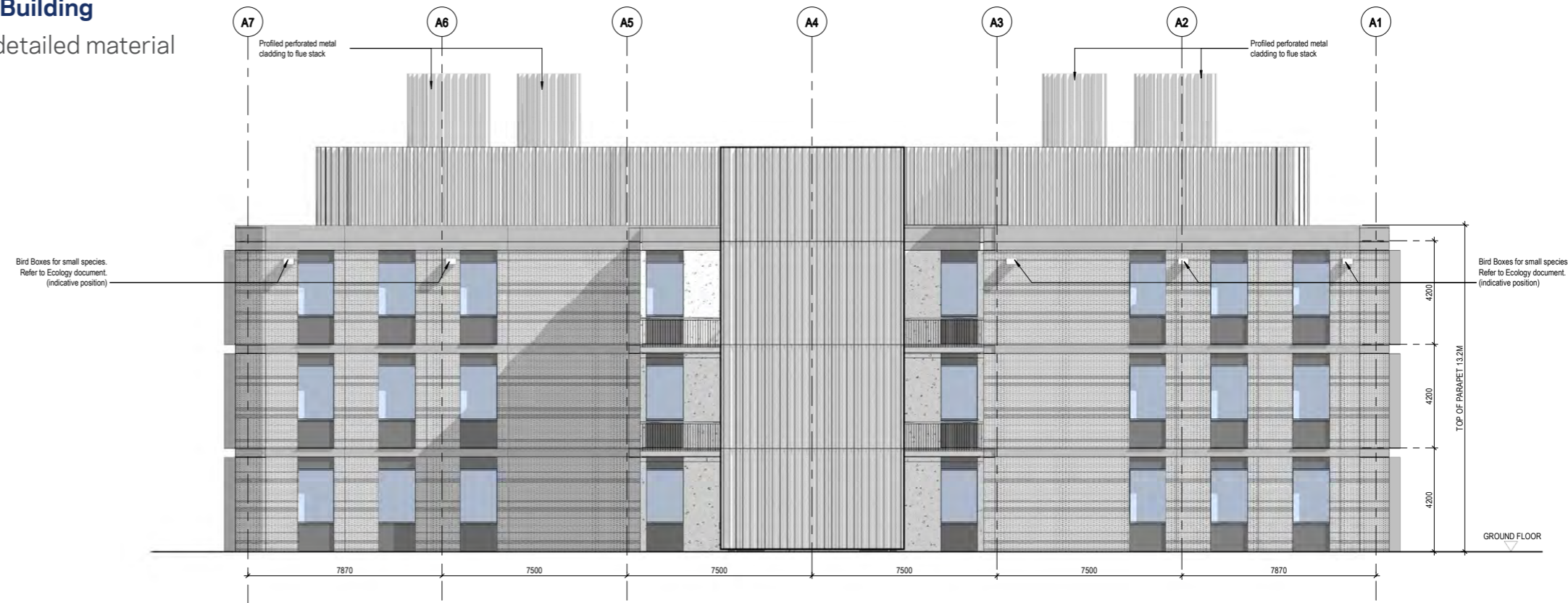
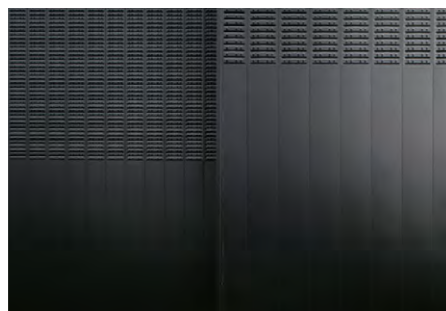
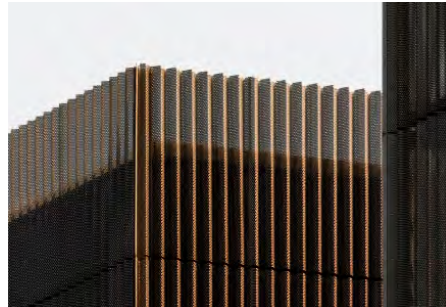
2 PROPOSED SOUTH ELEVATION - ACADEMIC BUILDING
1:100



4.0 Proposed Facade Concept Strategy - Updated Materials

4.4 Updated Facade Materials - Academic Building

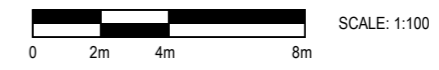
Refer to accompanying elevation drawings for detailed material specification.



1 PROPOSED NORTH ELEVATION - ACADEMIC BUILDING
1:100



2 PROPOSED SOUTH ELEVATION - ACADEMIC BUILDING
1:100

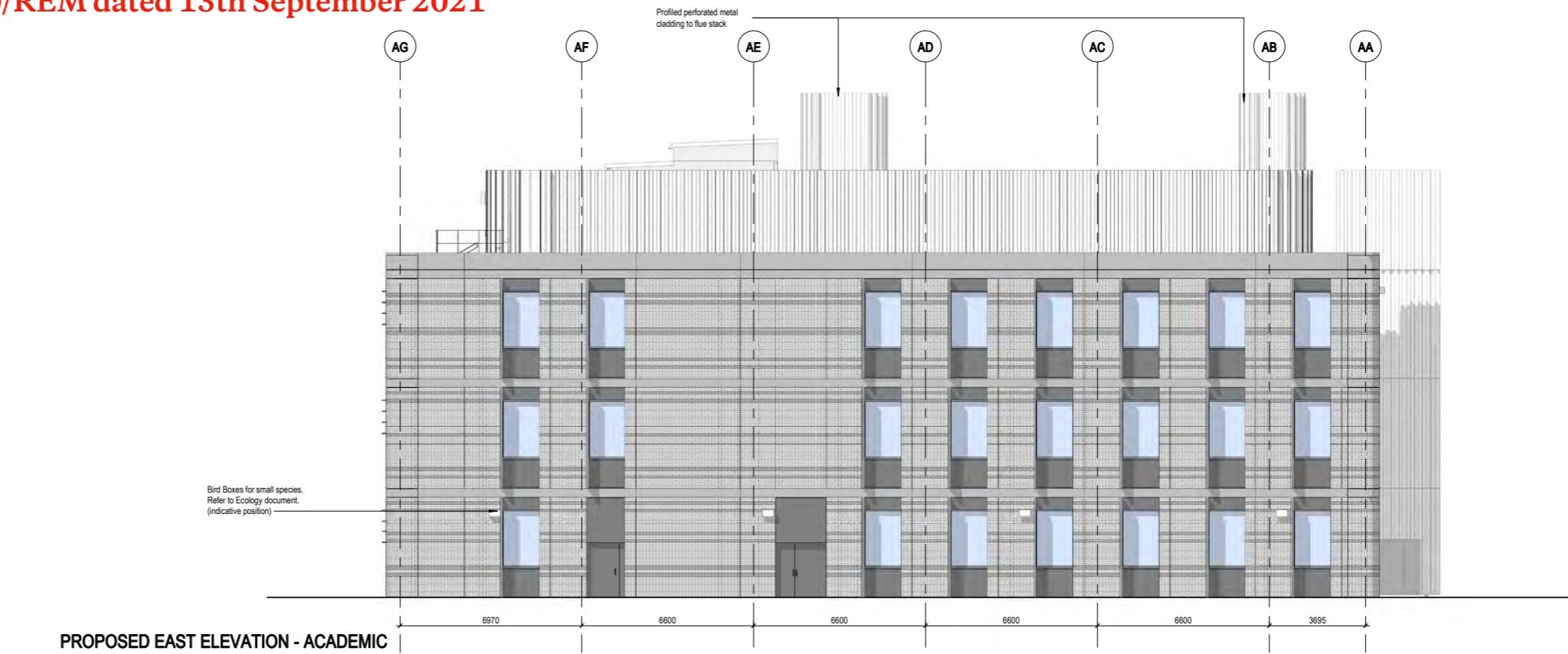
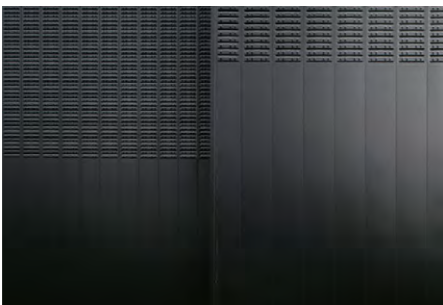
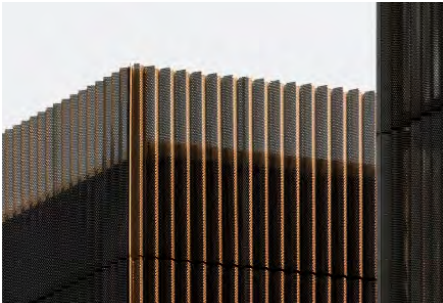


4.0 Proposed Facade Concept Strategy

Included in RMS Submission 21/03150/REM dated 13th September 2021

4.4 Proposed Facades - Academic Building

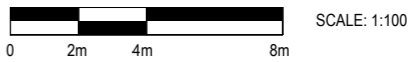
Refer to accompanying elevation drawings for specification.



1 PROPOSED EAST ELEVATION - ACADEMIC BUILDING
1:100



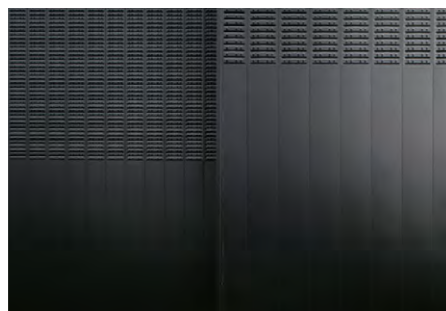
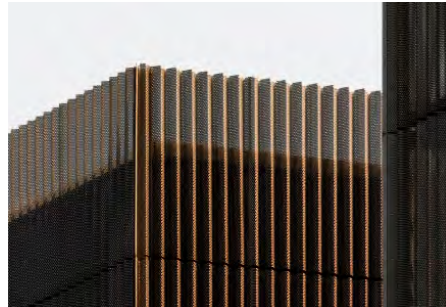
2 PROPOSED WEST ELEVATION - ACADEMIC BUILDING
1:100



4.0 Proposed Facade Concept Strategy - Updated Materials

4.4 Updated Facade Materials - Academic Building

Refer to accompanying elevation drawings for detailed material specification.



1 PROPOSED EAST ELEVATION - ACADEMIC BUILDING
1:100



2 PROPOSED WEST ELEVATION - ACADEMIC BUILDING
1:100



4.0 Proposed Facade Concept Strategy **Included in RMS Submission 21/03150/REM dated 13th September 2021**

Commercial Building - Proposed building visualisation



Commercial Building - Main Entrance

4.0 Proposed Facade Concept Strategy

Commercial Building - Updated building visualisation



Commercial Building - Main Entrance

4.0 Proposed Facade Concept Strategy **Included in RMS Submission 21/03150/REM dated 13th September 2021**

Academic Building - Proposed building visualisation



4.0 Proposed Facade Concept Strategy

Academic Building - Updated building visualisation



4.0 Proposed Facade Concept Strategy **Included in RMS Submission 21/03150/REM dated 13th September 2021**

Commercial Building - Proposed building visualisation showing Academic building in the background



4.0 Proposed Facade Concept Strategy

Commercial Building - Updated building visualisation showing Academic building in the background



Summary

Summary

**Included in RMS Submission
21/03150/REM dated 13th September
2021**

The proposals for the two new buildings on Begbroke Science Park seek to increase the capacity for laboratory space across the park to support the growing need for innovative and high quality research spaces across Oxfordshire.

Applying a shared, high quality design language on the proposed developments will bring aesthetic cohesion to the current campus whilst setting up a new vision and design direction for future developments on the science park.



Summary - Updated Visuals

The proposals for the two new buildings on Begbroke Science Park seek to increase the capacity for laboratory space across the park to support the growing need for innovative and high quality research spaces across Oxfordshire.

Applying a shared, high quality design language on the proposed developments will bring aesthetic cohesion to the current campus whilst setting up a new vision and design direction for future developments on the science park.

