

GENERAL NOTE:

All existing service runs whether in walls or within floor voids to be utilised.
 All redundant service runs whether exposed or buried with existing structure to be removed and any damage caused by previous work to be made good.
 All existing surface fixed service runs whether clipped to existing fabric to be removed, all boxing out removed and all damage made good.
 All existing but redundant rainwater or soil pipes to be removed from facade and any damage made good

All secondary radiator pipework to occupy previously notched joists from previous central heating installation.

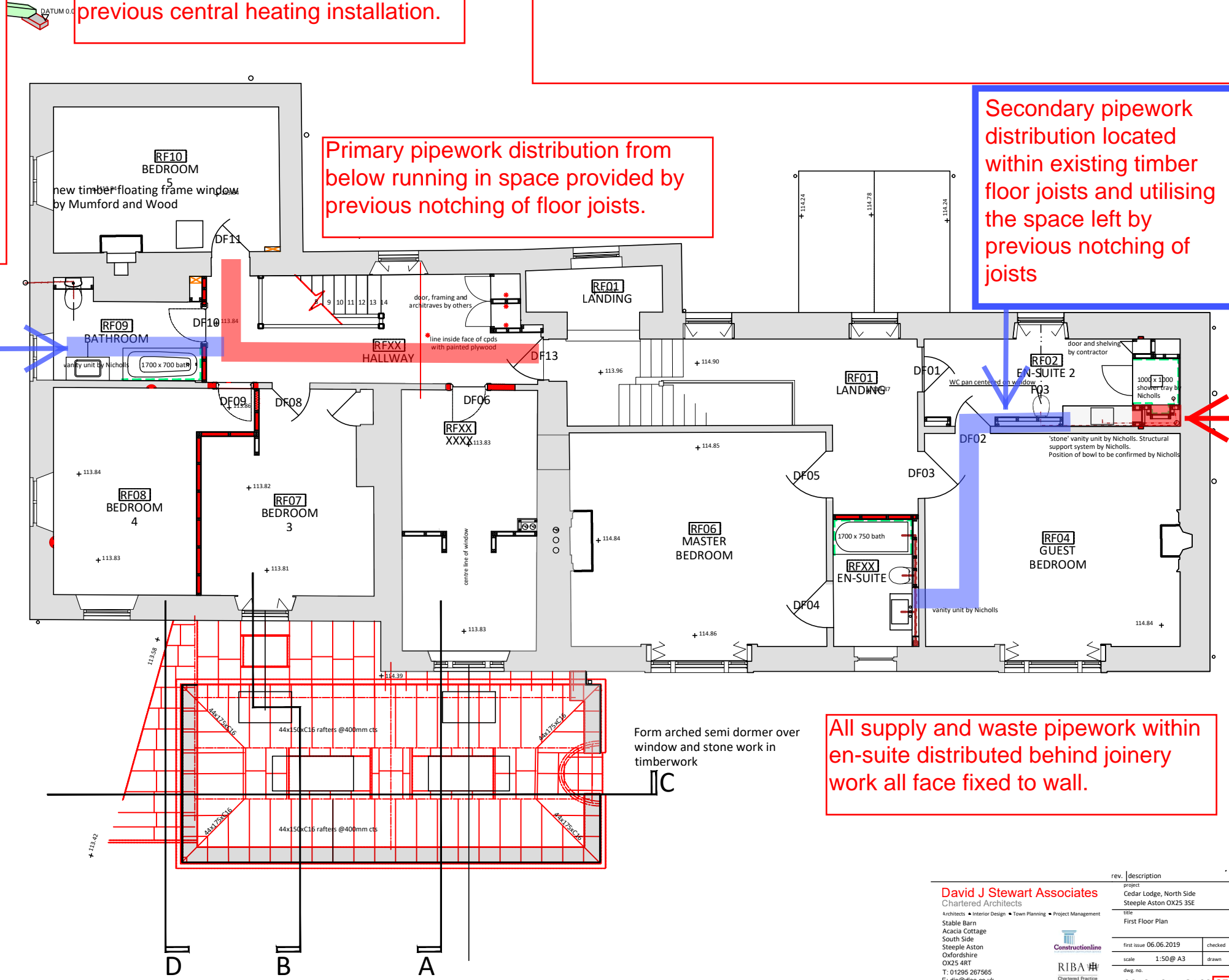
Vertical riser containing all distribution pipework from below and ventilation extract duct.
 Extract duct to continue vertically up into loft space and to terminate in a tile vent located in existing roof slates on the inside valley gutter side between the two roofs.

Primary pipework distribution from below running in space provided by previous notching of floor joists.

Secondary pipework distribution located within existing timber floor joists and utilising the space left by previous notching of joists

Secondary pipework distribution located within existing timber floor joists and utilising the space left by previous notching of joists that contained previous installation. Waste from sanitary appliances connected into existing external soil and vent pipes utilising existing holes within wall

All supply and waste pipework within en-suite distributed behind joinery work all face fixed to wall.



rev.	description	date	dm	ckd
1	Issue for construction	06.06.2019	djs	
2	Revised for construction			

David J Stewart Associates
 Chartered Architects
 Architects • Interior Design • Town Planning • Project Management
 Stable Barn
 Acacia Cottage
 South Side
 Steeple Aston
 Oxfordshire
 OX25 4RT
 T: 01295 267565
 E: djs@djsa.co.uk

Constructionline
 RIBA
 Chartered Practice

2018-1014-GA02 **SERVICE MARKUP**