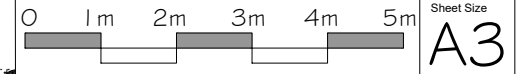


KINGSMERE, BICESTER KMF & KMG

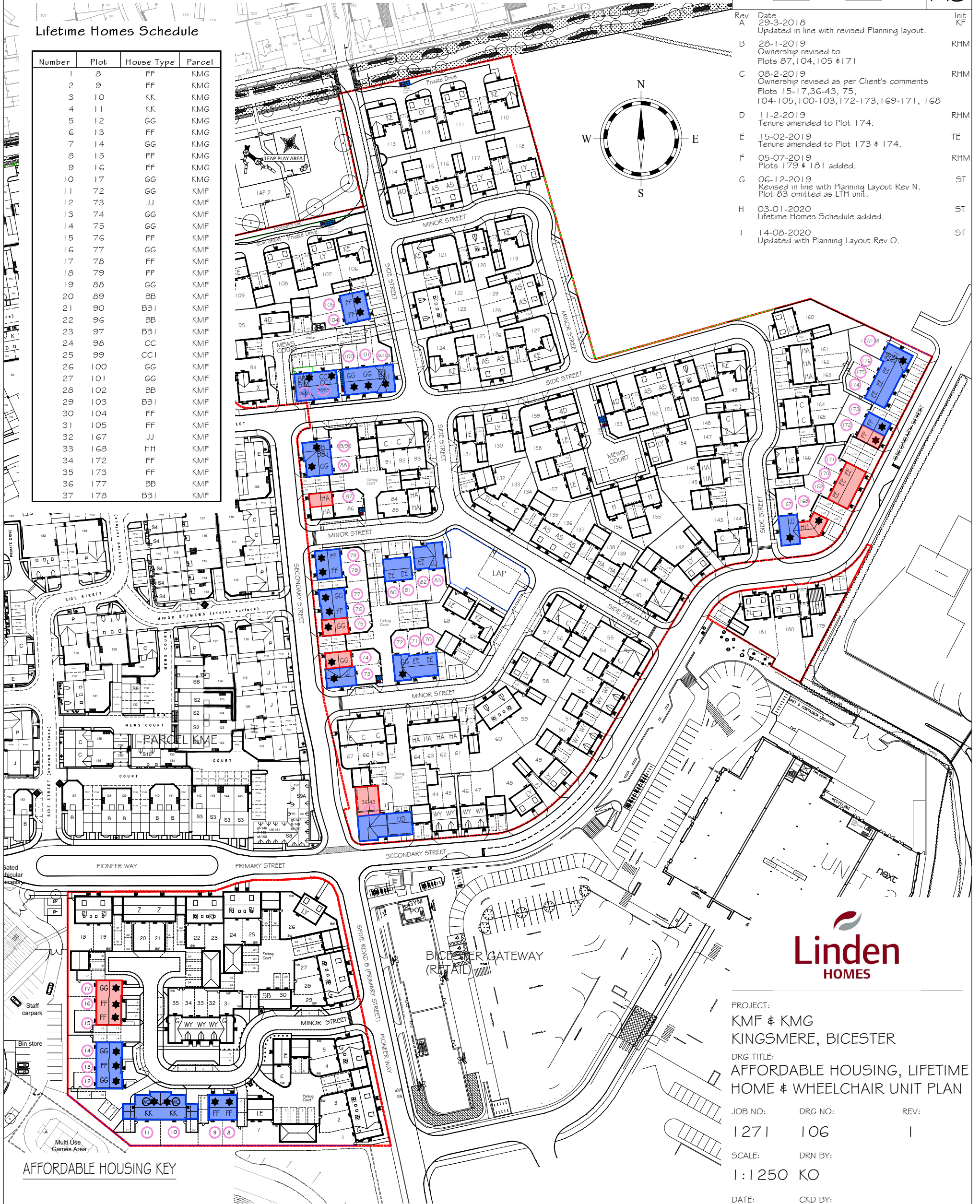
© This drawing and works depicted are copyright of The Noble Consultancy Ltd. and may not be reproduced or amended except by written permission. No liability will be accepted for amendments made by other persons.



Rev	Date	Init
A	29-3-2018 Updated in line with revised Planning layout.	KF
B	28-1-2019 Ownership revised to Plots 87, 104, 105 & 171	RHM
C	08-2-2019 Ownership revised as per Client's comments Plots 15-17, 36-43, 75, 104-105, 100-103, 172-173, 169-171, 168	RHM
D	11-2-2019 Tenure amended to Plot 174.	RHM
E	15-02-2019 Tenure amended to Plot 173 & 174.	TE
F	05-07-2019 Plots 179 & 181 added.	RHM
G	06-12-2019 Revised in line with Planning Layout Rev N. Plot 83 omitted as LTH unit.	ST
H	03-01-2020 Lifetime Homes Schedule added.	ST
I	14-08-2020 Updated with Planning Layout Rev O.	ST

Lifetime Homes Schedule

Number	Plot	House Type	Parcel
1	8	FF	KMG
2	9	FF	KMG
3	10	KK	KMG
4	11	KK	KMG
5	12	GG	KMG
6	13	FF	KMG
7	14	GG	KMG
8	15	FF	KMG
9	16	FF	KMG
10	17	GG	KMG
11	72	GG	KMF
12	73	JJ	KMF
13	74	GG	KMF
14	75	GG	KMF
15	76	FF	KMF
16	77	GG	KMF
17	78	FF	KMF
18	79	FF	KMF
19	88	GG	KMF
20	89	BB	KMF
21	90	BB	KMF
22	96	BB	KMF
23	97	BB	KMF
24	98	CC	KMF
25	99	CC	KMF
26	100	GG	KMF
27	101	GG	KMF
28	102	BB	KMF
29	103	BB	KMF
30	104	FF	KMF
31	105	FF	KMF
32	167	JJ	KMF
33	168	HH	KMF
34	172	FF	KMF
35	173	FF	KMF
36	177	BB	KMF
37	178	BB	KMF



AFFORDABLE HOUSING KEY

- Affordable Rent
- Affordable Shared Ownership
- ★ Lifetime homes (Affordable)
- WC Wheel chair accessible (Affordable)

AFFORDABLE HOUSING, LIFETIME HOME & WHEELCHAIR UNIT PLAN



PROJECT:
KMF & KMG
KINGSMERE, BICESTER

DRG TITLE:
AFFORDABLE HOUSING, LIFETIME HOME & WHEELCHAIR UNIT PLAN

JOB NO: 1271 DRG NO: 106 REV: 1

SCALE: 1:1250 DRN BY: KO

DATE: 09/17 CKD BY: NN

■ The **NOBLE** Consultancy ■
 ■ Architectural ■ Planning ■ Urban Design ■ Landscaping ■
 The Stables, Says Court Farm, Badminton Road
 Frampton Cotterell, South Gloucestershire, BS36 2NY
 T: 0844 7452033
 E: design@noble-consultancy.co.uk
 W: www.noble-consultancy.co.uk