

STAGING DIAGRAM	STAGE 1	STAGE 2
	GO 	GO
	RED TIMINGS	
	25	25
GREEN TIMINGS		
50	50	

EWR Alliance
Connecting People

50

SAFETY ZONE DIMENSIONS
Permanent speed limit 50mph
Sideways safety zone 1.2m
Longways safety zone 30m
(Dimensions are minima)

Drawing Office			
DWG Number	EWR-2A-A1-0001	Date Surveyed	Customer
Revision	1	Date Drawn	17-02-20
Drawn By	PT	Phase Number	1 of 1
Survey By	DB	Page Number	1 of 1
Checked By	EJL		

- Area of Works
- Safety Zones
- Temp Traffic Signals
- 900mm/1200mm Road Signs on 'A' Frames
- 750mm Road Signs
- 750mm/1m Road Cones

Site Details Address

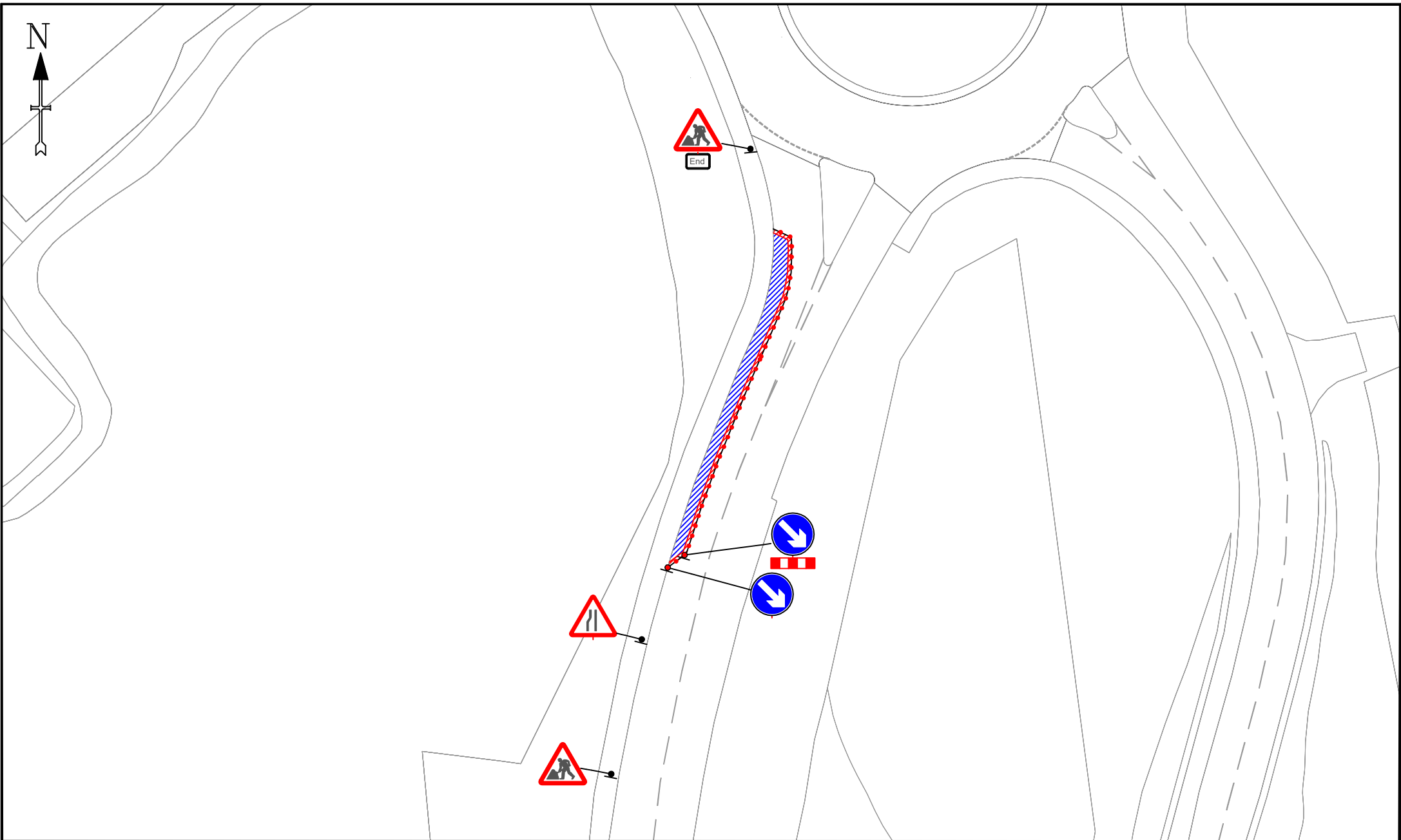
Bicester Road
A1 Site Compound Access
OX25 6EP

Drawing Notes

1. Do not scale from this drawing, all dimensions to be verified on site.
2. It will be the responsibility of the contractor to ensure that all temporary traffic management shall be in accordance with the Traffic Signs Manual chapter 8 2009. Safety at Street works 2015, Traffic Signs Regulations and General Directions 2016 and all current / relevant health and safety legislation.
3. All signage placement will be subject to available safe working spaces and all signage will be secured / balanced with stops or sandbags.
4. A minimum lateral safety zone of 0.5M will be maintained at all times.
5. A minimum working lane of 3.0m will be maintained for vehicles.
6. A safe segregated working area will be provided and maintained at all times.
7. Maximum size of temporary signage will be 750mm.

CRE Approval: Ish	Approved By: DB
Approval Date:	Checked By: EL

All icons taken, reproduced by permission of Ordnance Survey on behalf of HMRS. © Crown copyright 2015. All rights reserved. Ordnance Survey licence number 100049020.



EWR Alliance
Connecting People

30

SAFETY ZONE DIMENSIONS
Permanent speed limit 30mph or less
Sideways safety zone 0.5m
Longways safety zone 0.5m
(Dimensions are minima)



Drawing Office

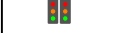
DWG Number	EWR2-2A-A1-0002	Date Surveyed	Customer
Revision	1	Date Drawn	17-02-20
Drawn By	PT	Phase Number	1 of 1
Survey By	DB	Page Number	1 of 1
Checked By	EJL		



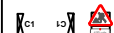
Area of Works



Safety Zones



Temp Traffic Signals



900mm/1200mm Road Signs on 'A' Frames



750mm Road Signs



750mm/1m Road Cones

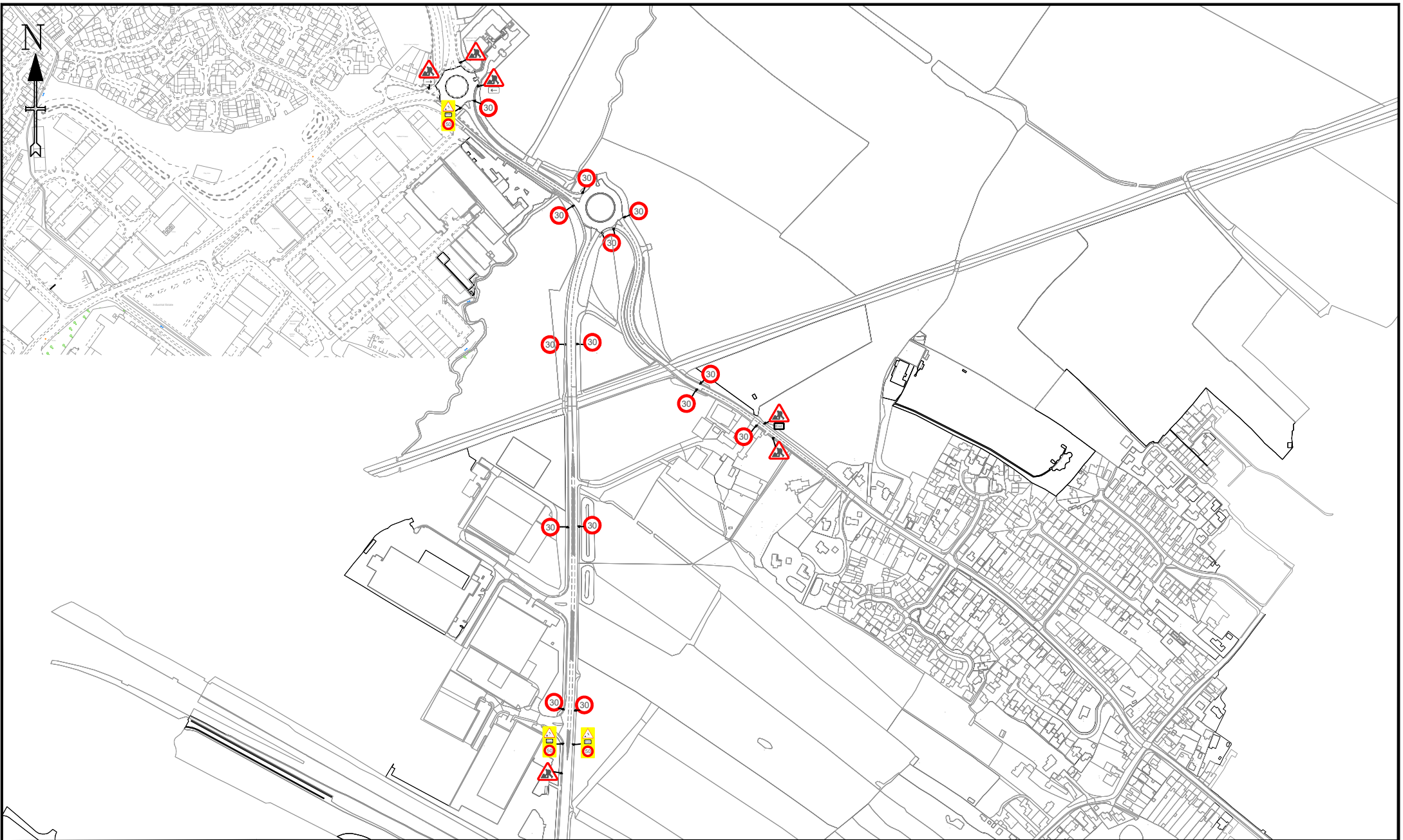
Site Details Address

Charbridge Lane
A1 Other Access
OX26 4UP

Drawing Notes

1. Do not scale from this drawing. All dimensions to be verified on site.
2. It will be the responsibility of the contractor to ensure that all temporary traffic management shall be in accordance with the Traffic Signs Manual chapter 8 2000. Safety at Street works 2015, Traffic Signs Regulations and General Directions 2016 and all current / relevant health and safety legislation.
3. An average placement of the subject to be marked with working cones and all signage will be secured / balanced with stops or sandbags.
4. A minimum lateral safety zone of 0.5m will be maintained at all times.
5. A minimum length of 3.0m will be maintained for vehicles.
6. A safe segregated working area will be provided and maintained at all times.
7. Maximum size of temporary signage will be 750mm.

CRE Approval: Ish Approved By: DB
Approval Date: Checked By: EL



EWR Alliance
Connecting People

SAFETY ZONE DIMENSIONS
Permanent speed limit 30mph or less
Sideways safety zone 0.5m
Longways safety zone 0.5m
(Dimensions are minima)

Drawing Office

DWG Number	EWR2-2A-A1-0003	Date Surveyed	Customer
Revision	4	Date Drawn	02-07-20
Drawn By	PT	Phase Number	1 of 1
Survey By	DB	Page Number	1 of 1
Checked By	EJL		

-  Area of Works
-  Safety Zones
-  Temp Traffic Signals
-  900mm/1200mm Road Signs on 'A' Frames
-  750mm Road Signs
-  750mm/1m Road Cones

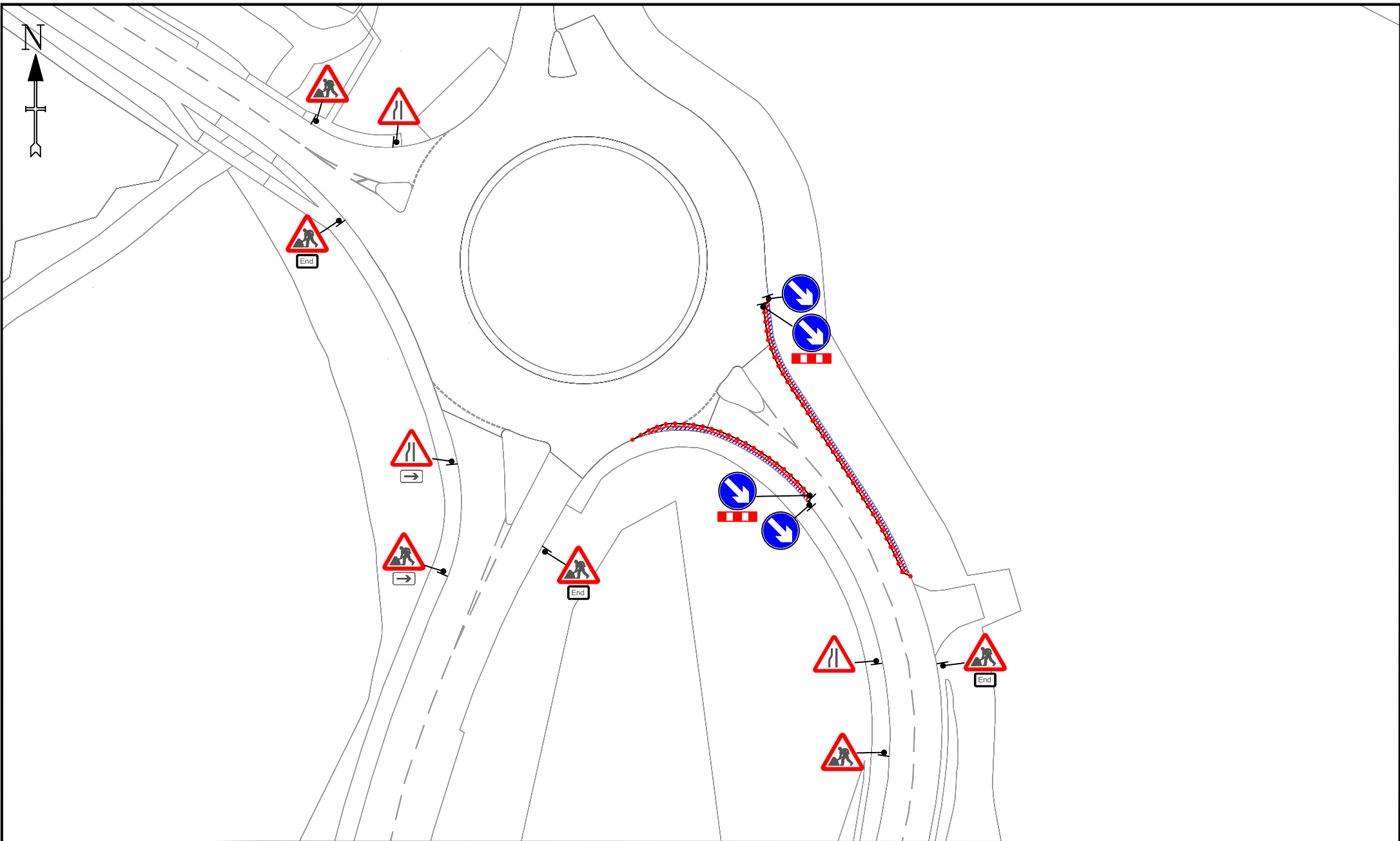
Site Details Address

Bicester Road
A1 Site Compound Access
OX25 6EP

Drawing Notes

1. Do not scale from this drawing, all dimensions to be verified on site.
2. It will be the responsibility of the contractor to ensure that all temporary traffic management shall be in accordance with the Traffic Signs Manual chapter 8 2000 Safety at Street works 2015, Traffic Signs Regulations and General Directions 2016 and all current / relevant health and safety legislation.
3. All signage placement will be subject to available safe working spaces and all signage will be secured / braked with stops or wedges.
4. A minimum cleared safety zone of 0.5M will be maintained at all times.
5. A measuring line of 3.0m will be maintained for vehicles.
6. A safe segregated working area will be provided and maintained at all times.
7. Minimum size of temporary signage will be 750mm.
8. All additional warning signage on the approaches to the works will be double braked where possible.

CRE Approval: Ish Approved By: DB
Approval Date: Checked By: EL



EWR Alliance
Connecting People

30

SAFETY ZONE DIMENSIONS
Permanent speed limit 30mph or less
Sideways safety zone 0.5m
Longways safety zone 0.5m
(Dimensions are minima)

Drawing Office

DWG Number	EWR2-2A-A1-0004	Date Surveyed	Customer
Revision	1	Date Drawn	17-02-20
Drawn By	PT	Phase Number	1 of 1
Survey By	DB	Page Number	1 of 1
Checked By	EJL		

-  Area of Works
-  Safety Zones
-  Temp Traffic Signals
-  900mm/1200mm Road Signs on 'A' Frames
-  750mm Road Signs
-  750mm/1m Road Cones

Site Details Address

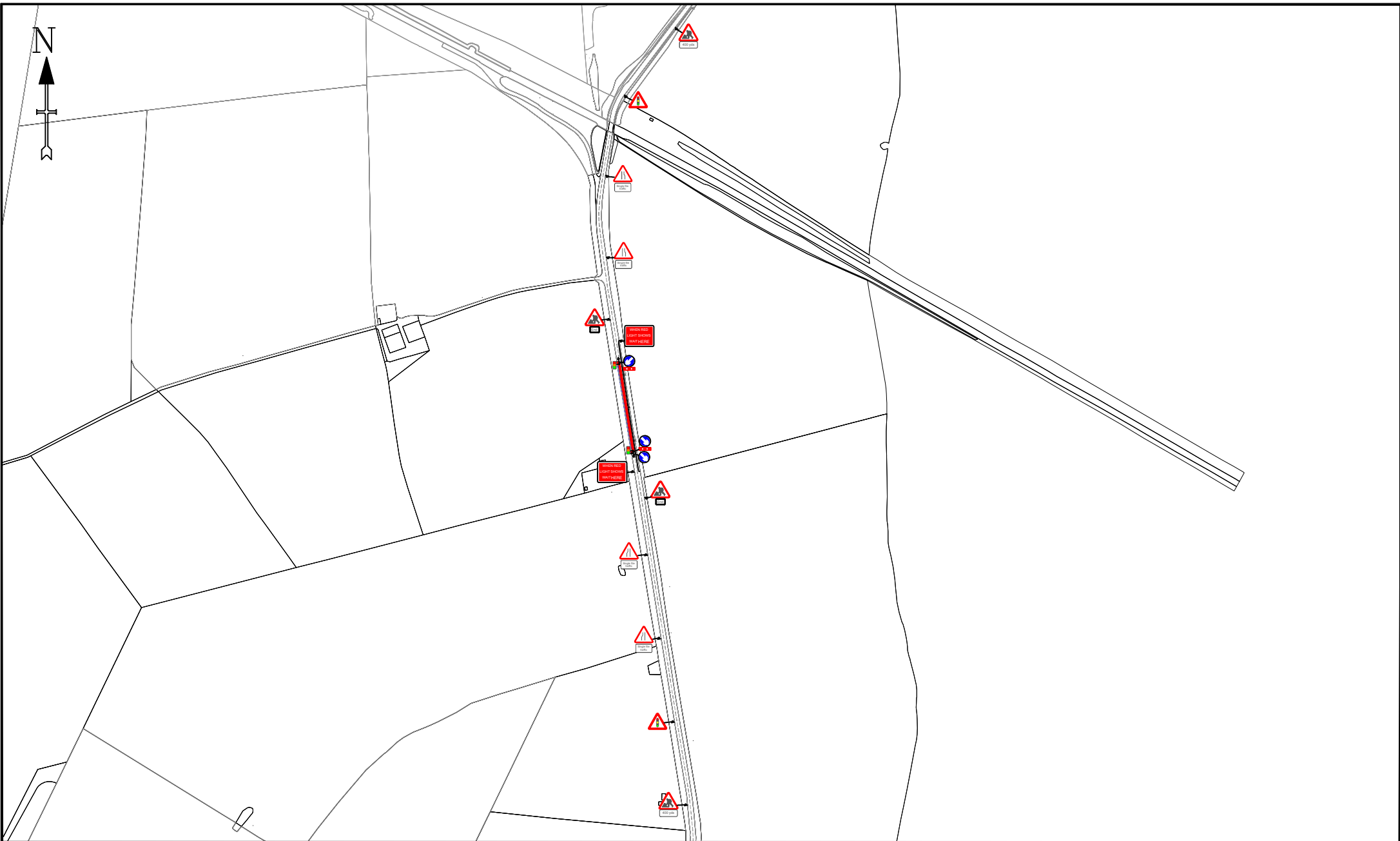
Bicester Road
A1 Site Compound Access
OX25 6EP

Drawing Notes

1. Do not scale from this drawing, all dimensions to be verified on site.
2. It will be the responsibility of the contractor to ensure that all temporary traffic management shall be in accordance with the Traffic Signs Manual chapter 8 2009.
3. Safety at Street works 2015, Traffic Signs Regulations and General Directions 2016 and all current / relevant health and safety legislation.
4. All signage placement will be subject to available safe working spaces and all signage will be secured / balanced with stops or sandbags.
5. A minimum lateral safety zone of 0.5m will be maintained at all times.
6. A minimum safety zone of 3.0m will be maintained for vehicles.
7. Minimum size of temporary signage will be 750mm.
8. All advanced warning signage on the approaches to the works will be double lined where possible.

CRE Approval: Ish Approved By: DB
Approval Date: Checked By: EL

© All map data reproduced by permission of Ordnance Survey on behalf of HMCO. © Crown Copyright 2016. All rights reserved. Ordnance Survey.



EWR Alliance
Connecting People

SAFETY ZONE DIMENSIONS
Permanent speed limit 60mph
Sideways safety zone 1.2m
Longways safety zone 60m
(Dimensions are minima)

Drawing Office

DWG Number	EWR2-2A-A1-0005	Date Surveyed	Customer
Revision	1	Date Drawn	17-02-20
Drawn By	PT	Phase Number	1 of 3
Survey By	Cust	Page Number	1 of 1
Checked By	EL		



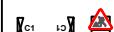
Area of Works



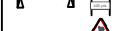
Safety Zones



Temp Traffic Signals



900mm/1200mm Road Signs on 'A' Frames



750mm Road Signs



750mm/1m Road Cones

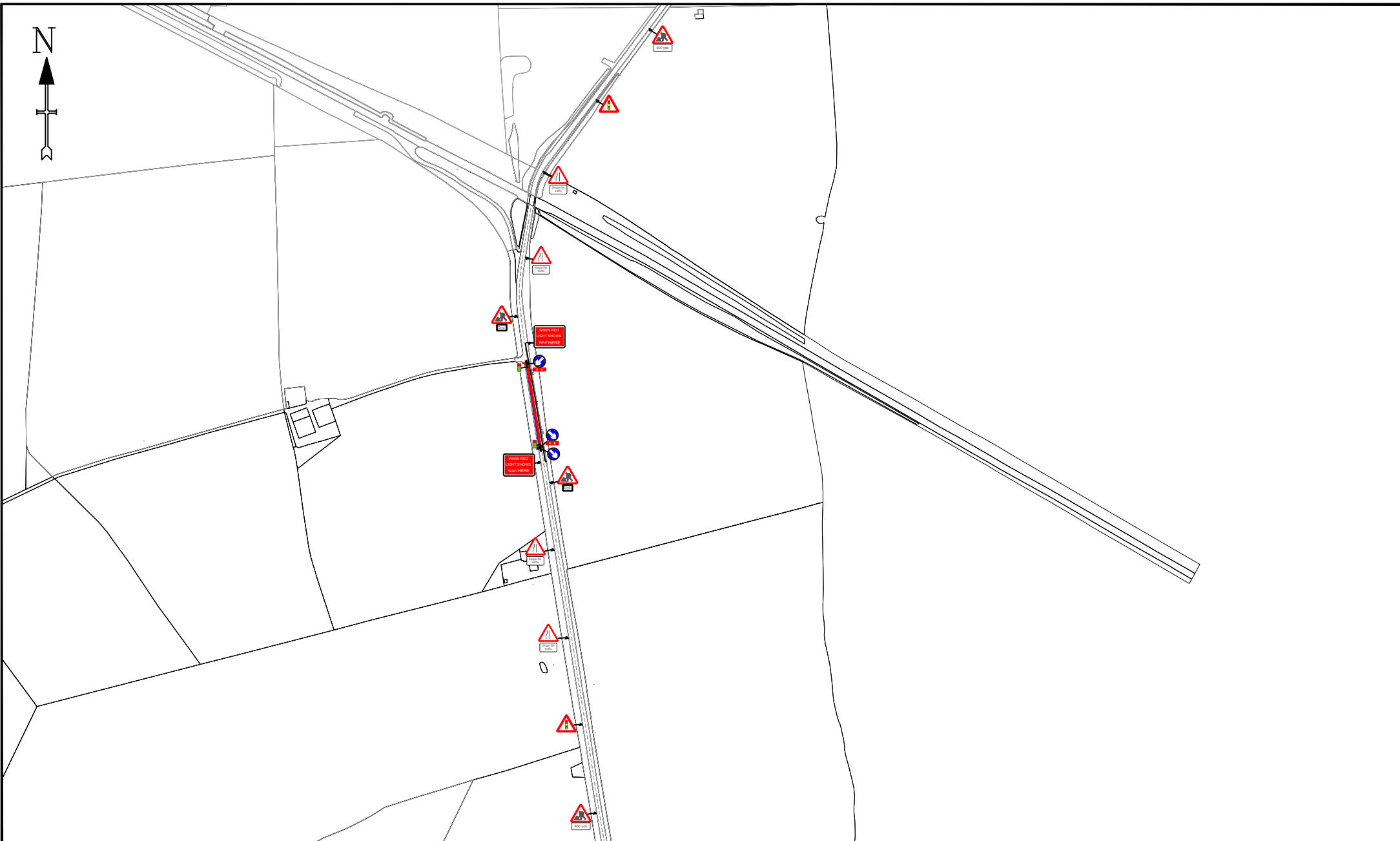
Site Details Address

**Blackgrove Road
HP18 0NJ**

Drawing Notes

1. Do not scale from this drawing. All dimensions to be verified on site.
2. It will be the responsibility of the contractor to ensure that all temporary traffic management shall be in accordance with the Traffic Signs Manual chapter 8 2009. Safety at Street works 2015, Traffic Signs Regulations and General Directions 2016 and all current / relevant health and safety legislation.
3. All signage placement will be subject to available safe working spaces and all signage will be secured / balanced with stops or sandbags.
4. A minimum lateral safety zone of 0.5M will be maintained at all times.
5. A minimum running lane of 3.0m will be maintained for vehicles.
6. A safe segregated working area will be provided and maintained at all times.
7. Minimum size of temporary signage will be 750mm.

CRE Approval: Ish Approved By: DB
Approval Date: Checked By: EL



EWR Alliance
Connecting People

SAFETY ZONE DIMENSIONS
Permanent speed limit 60mph
Sideways safety zone 1.2m
Longways safety zone 60m
(Dimensions are minima)

Drawing Office

DWG Number	EWR2-2A-A1-0005	Date Surveyed	Customer
Revision	1	Date Drawn	17-02-20
Drawn By	PT	Phase Number	2 of 3
Survey By	Cust	Page Number	1 of 1
Checked By	EL		



Area of Works
Safety Zones
Temp Traffic Signals
900mm/1200mm Road Signs on 'A' Frames
750mm Road Signs
750mm/1m Road Cones

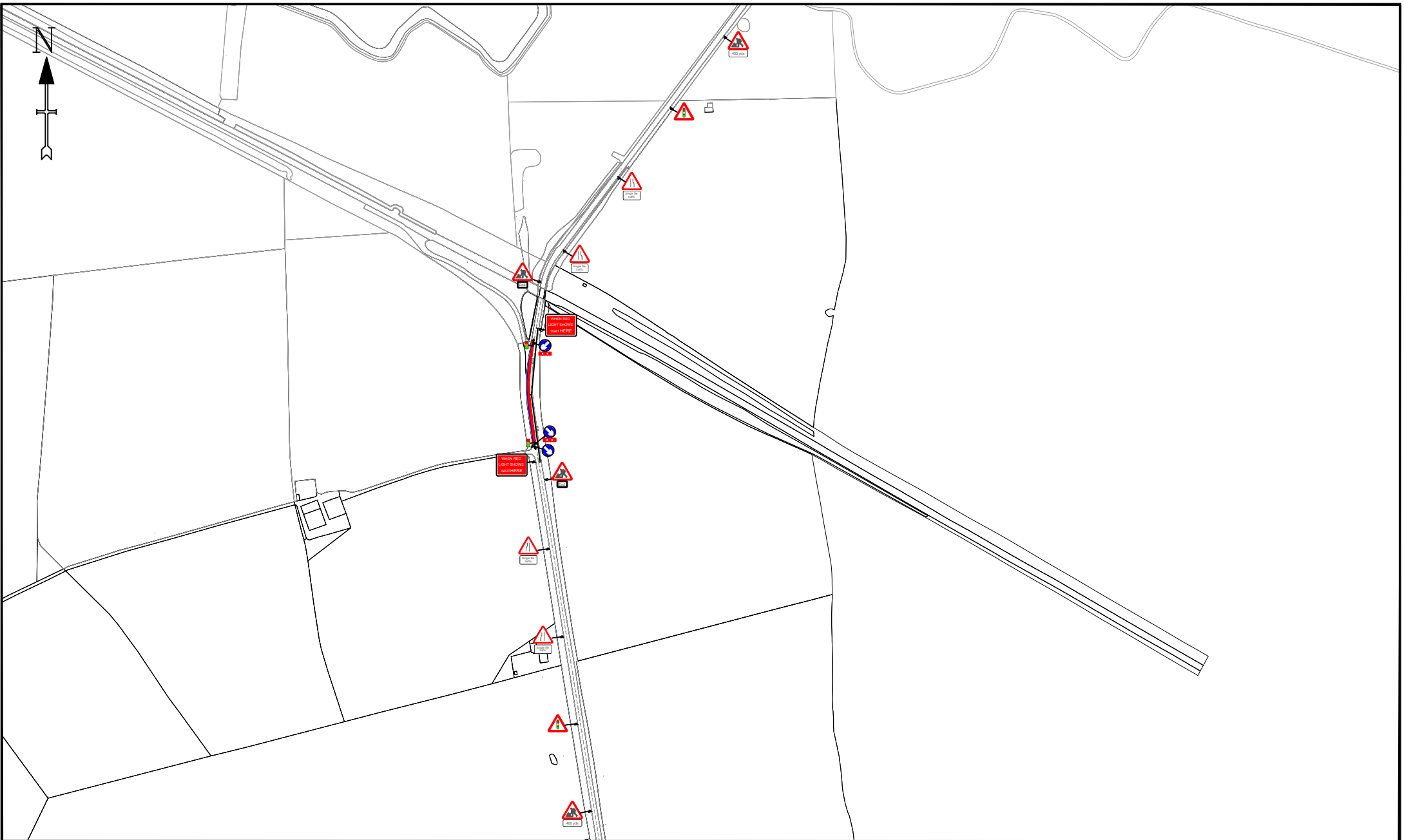
Site Details Address

Blackgrove Road
HP18 0NJ

Drawing Notes

1. Do not scale from this drawing, all dimensions to be verified on site.
2. It will be the responsibility of the contractor to ensure that all temporary traffic management shall be in accordance with the Traffic Signs Manual chapter 8 2009, Safety at Street works 2015, Traffic Signs Regulations and General Directions 2016 and all current / relevant health and safety legislation.
3. All signage placement will be subject to available safe working spaces and all signage will be secured / stabilized with stops or sandbags.
4. A minimum lateral safety zone of 0.5M will be maintained at all times.
5. A minimum seeing line of 3.0m will be maintained for vehicles.
6. A safe segregated working area will be provided and maintained at all times.
7. Minimum size of temporary signage will be 750mm.

CRE Approval: Ish Approved By: DB
Approval Date: Checked By: EL



EWR Alliance
Connecting People

SAFETY ZONE DIMENSIONS
Permanent speed limit 60mph
Sideways safety zone 1.2m
Longways safety zone 60m
(Dimensions are minima)

Drawing Office

DWG Number	EWR2-2A-A1-0005	Date Surveyed	Customer
Revision	1	Date Drawn	17-02-20
Drawn By	PT	Phase Number	3 of 3
Survey By	Cust	Page Number	1 of 1
Checked By	EL		

-  Area of Works
-  Safety Zones
-  Temp Traffic Signals
-  900mm/1200mm Road Signs on 'A' Frames
-  750mm Road Signs
-  750mm/1m Road Cones

Site Details Address

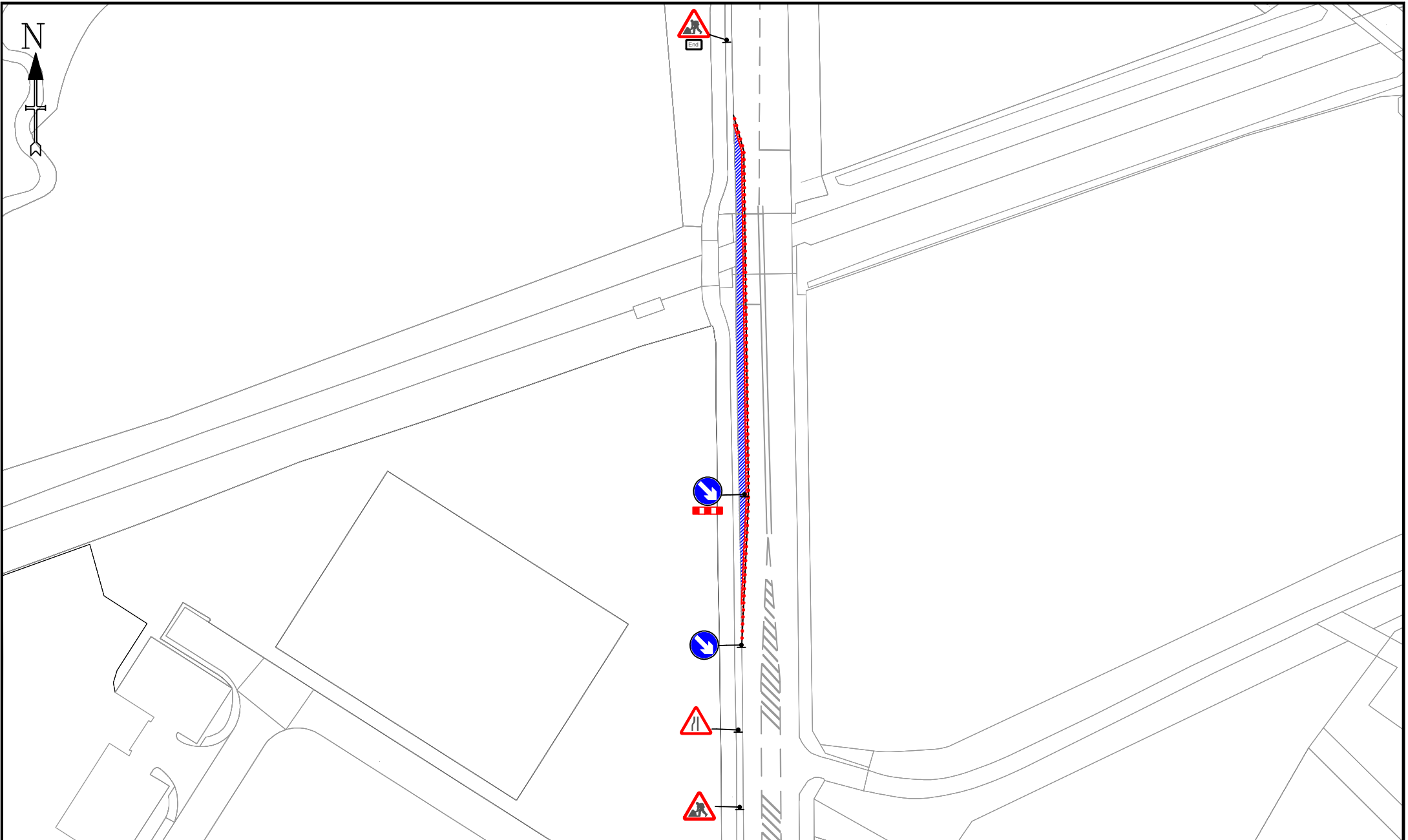
Blackgrove Road
HP18 0NJ

Drawing Notes

1. Do not scale from this drawing, all dimensions to be verified on site.
2. It will be the responsibility of the contractor to ensure that all temporary traffic management shall be in accordance with the Traffic Signs Manual chapter 8 2009, Safety at Street works 2015, Traffic Signs Regulations and General Directions 2016 and all current / relevant health and safety legislation.
3. All signage placement will be subject to available safe working spaces and all signage will be secured / balanced with stops or sandbags.
4. A minimum lateral safety zone of 0.5M will be maintained at all times.
5. A minimum running lane of 3.0m will be maintained for vehicles.
6. A safe segregated working area will be provided and maintained at all times.
7. Minimum size of temporary signage will be 750mm.

CRE Approval: Ish Approved By: DB
Approval Date: Checked By: EL

© 2020 EWR Alliance. All rights reserved. Ordnance Survey Licence 100049438/2020



EWR Alliance
Connecting People

30


SAFETY ZONE DIMENSIONS
Permanent speed limit 30mph or less
Sideways safety zone 0.5m
Longways safety zone 0.5m
(Dimensions are minima)

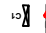
Drawing Office


DWG Number	EWR2-2A-A1-0006	Date Surveyed	Customer
Revision	2	Date Drawn	14-05-20
Drawn By	PT	Phase Number	1 of 1
Survey By	DB	Page Number	1 of 1
Checked By	EJL		

 Area of Works

 Safety Zones

 Temp Traffic Signals

 900mm/1200mm Road Signs on 'A' Frames

 750mm Road Signs

 750mm/1m Road Cones

Site Details Address

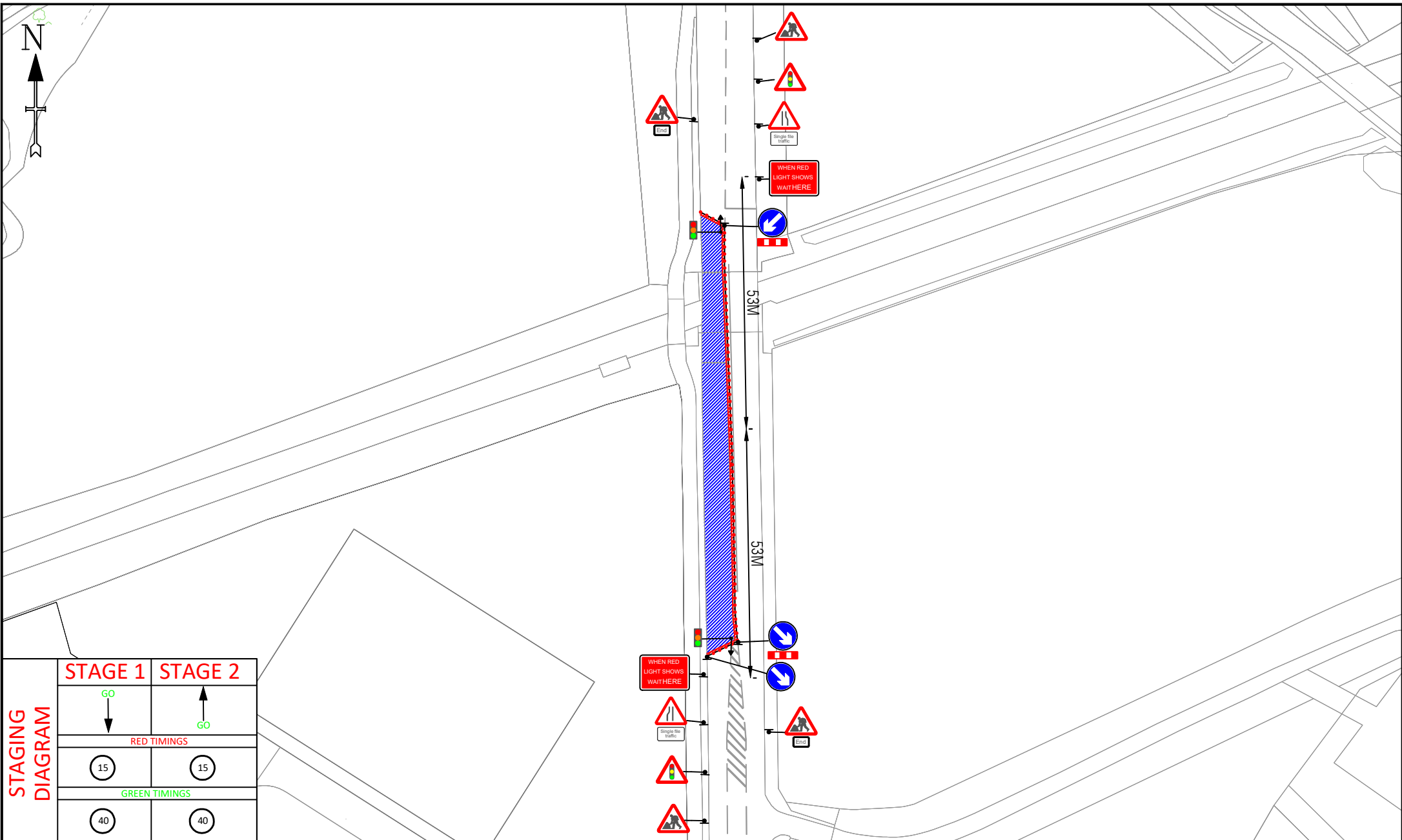
Charbridge Lane
OX26 4SW

Drawing Notes

1. Do not scale from this drawing, all dimensions to be verified on site.
2. It will be the responsibility of the contractor to ensure that all temporary traffic management shall be in accordance with the Traffic Signs Manual chapter 8 2009. Safety at Street works 2015, Traffic Signs Regulations and General Directions 2016 and all current / relevant health and safety legislation.
3. All signage placement will be subject to available safe working spaces and all signage will be secured / fastened with straps or webbing.
4. A minimum lateral safety zone of 0.5m will be maintained at all times.
5. A minimum length of 3.0m will be maintained for vehicles.
6. A safe segregated working area will be provided and maintained at all times.
7. Minimum size of temporary signage will be 750mm.

CRE Approval: Ish Approved By: DB
Approval Date: Checked By: EL

© EWR Alliance reproduced by permission of Ordnance Survey on behalf of HMCO. © Crown Copyright 2016. All rights reserved. Ordnance Survey Licence number 100049090/2016



STAGING DIAGRAM

STAGE 1	STAGE 2
GO ↓	↑ GO
RED TIMINGS	
15	15
GREEN TIMINGS	
40	40

EWR Alliance
Connecting People

30

SAFETY ZONE DIMENSIONS
 Permanent speed limit 30mph or less
 Sideways safety zone 0.5m
 Longways safety zone 0.5m
 (Dimensions are minima)

Drawing Office

DWG Number	EWR2-2A-A1-0007	Date Surveyed	Customer
Revision	2	Date Drawn	14-05-20
Drawn By	PT	Phase Number	1 of 1
Survey By	DB	Page Number	1 of 1
Checked By	EJL		

- Area of Works
- Safety Zones
- Temp Traffic Signals
- Signs on 'A' Frames
- 750mm Road Signs
- 750mm/1m Road Cones

Site Details Address

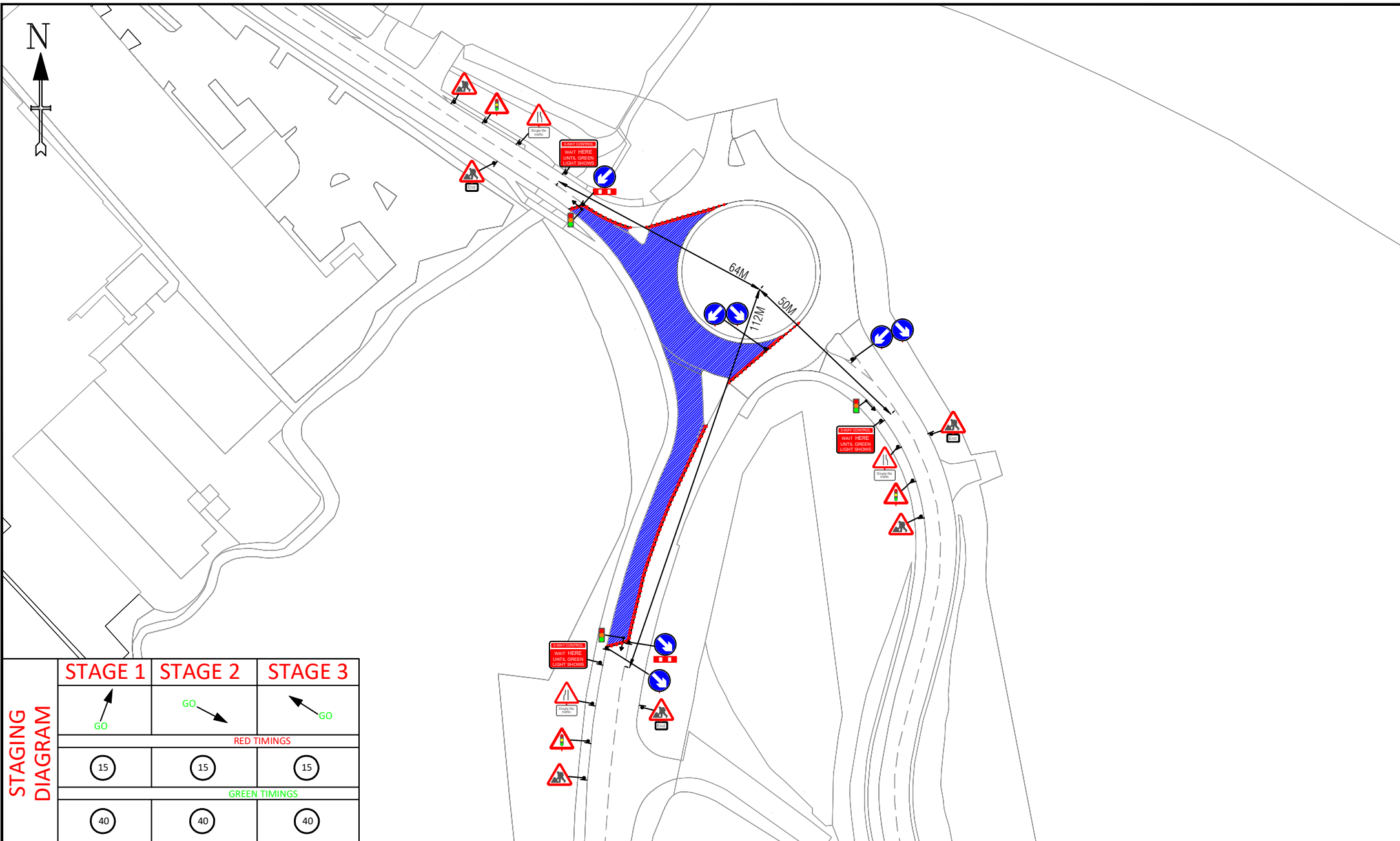
Charbridge Lane
OX26 4SW

Drawing Notes

1. Do not scale from this drawing, all dimensions to be verified on site.
2. It will be the responsibility of the contractor to ensure that all temporary traffic management shall be in accordance with the Traffic Signs Manual chapter 8 2009.
3. Safety at Street works 2015, Traffic Signs Regulations and General Directions 2016 and all current / relevant health and safety legislation.
4. An average placement of the subject to maintain safe working spaces and all signage will be secured / balanced with stops or sandbags.
5. A minimum lateral safety zone of 0.5m will be maintained at all times.
6. A minimum safety zone of 3.0m will be maintained for vehicles.
7. A safe segregated working area will be provided and maintained at all times.
8. Minimum size of temporary signage will be 750mm.

CRE Approval: Ish Approved By: DB
 Approval Date: Checked By: EL

OS map data reproduced by permission of Ordnance Survey on behalf of HMCS, © Crown Copyright 2015. All rights reserved. Ordnance Survey



STAGING DIAGRAM

STAGE 1	STAGE 2	STAGE 3
RED TIMINGS		
15	15	15
GREEN TIMINGS		
40	40	40

EWR Alliance
Connecting People

30

SAFETY ZONE DIMENSIONS
 Permanent speed limit 30mph or less
 Sideways safety zone 0.5m
 Longways safety zone 0.5m
 (Dimensions are minima)

Drawing Office

DWG Number	EWR2-2A-A1-0008	Date Surveyed	Customer
Revision	1	Date Drawn	17-02-20
Drawn By	PT	Phase Number	1 of 1
Survey By	DB	Page Number	1 of 1
Checked By	EJL		

- Area of Works
- Safety Zones
- Temp Traffic Signals
- 900mm/1200mm Road Signs on 'A' Frames
- 750mm Road Signs
- 750mm/1m Road Cones

Site Details Address

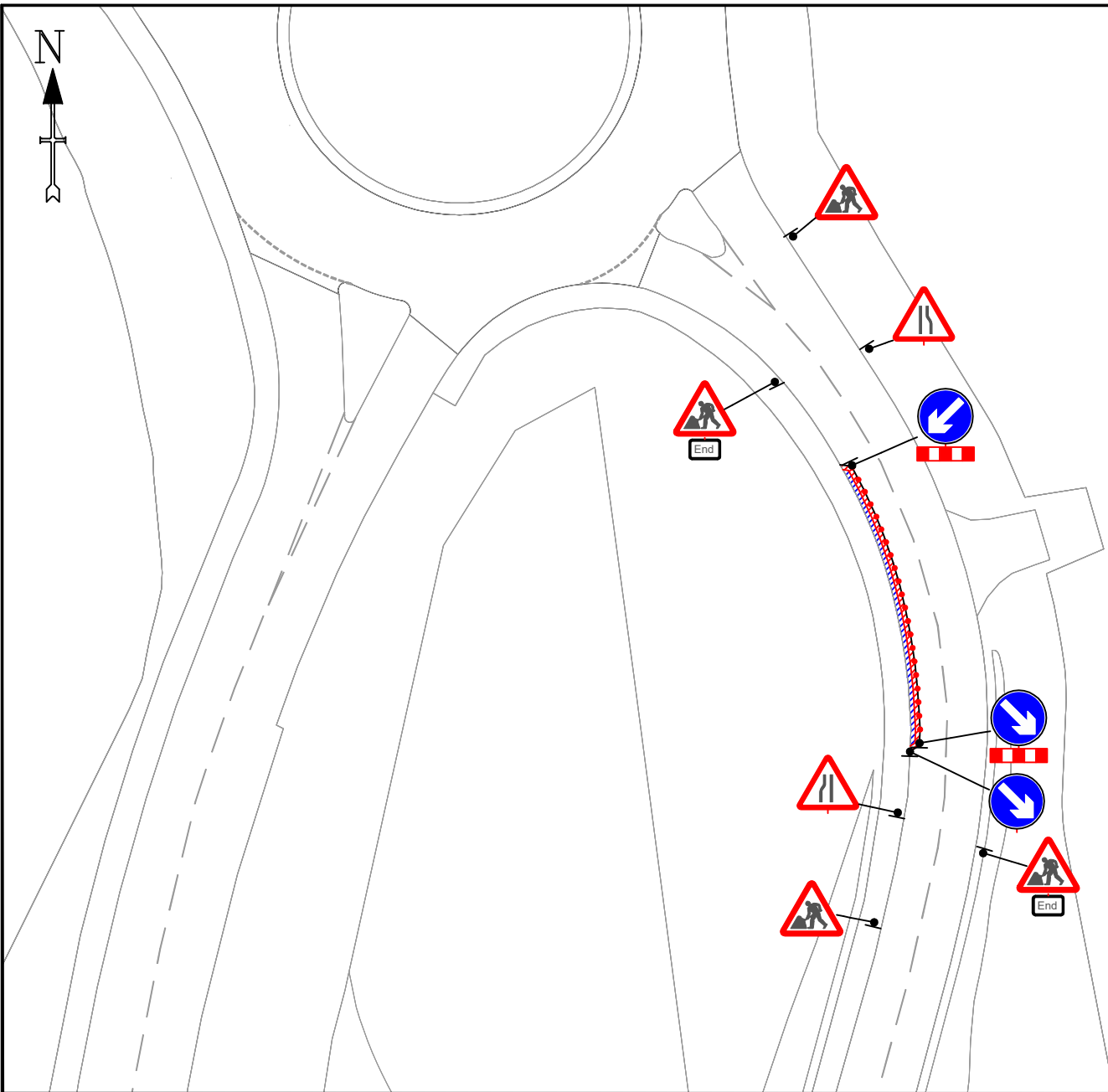
Charbridge Lane
 A1 Other Access
 OX26 4UP

Drawing Notes

1. Do not scale from this drawing. All dimensions to be verified on site.
2. It will be the responsibility of the contractor to ensure that all temporary traffic management shall be in accordance with the Traffic Signs Manual chapter 8 2009. Safety at Street works 2015, Traffic Signs Regulations and General Directions 2016 and all current / relevant health and safety legislation.
3. All signage placement will be subject to available safe working spaces and all signage will be secured / balanced with stops or sandbags.
4. A minimum lateral safety zone of 0.5M will be maintained at all times.
5. A measuring wheel of 3.0m will be maintained for vehicles.
6. A safe segregated working area will be provided and maintained at all times.
7. Minimum size of temporary signage will be 750mm.

CRE Approval: Ish Approved By: DB
 Approval Date: Checked By: EL

© See data maintained by permission of Ordnance Survey on behalf of HMSO. © Crown copyright 2015. All rights reserved. Ordnance Survey Licence number 100046622.



EWR Alliance
Connecting People

30

SAFETY ZONE DIMENSIONS
Permanent speed limit 30mph or less
Sideways safety zone 0.5m
Longways safety zone 0.5m
(Dimensions are minima)

Drawing Office

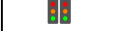
DWG Number	EWR2-2A-A1-0009	Date Surveyed	Customer
Revision	1	Date Drawn	17-02-20
Drawn By	PT	Phase Number	1 of 1
Survey By	DB	Page Number	1 of 1
Checked By	EJL		



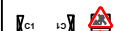
Area of Works



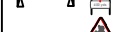
Safety Zones



Temp Traffic Signals



900mm/1200mm Road Signs on 'A' Frames



750mm Road Signs



750mm/1m Road Cones

Site Details Address

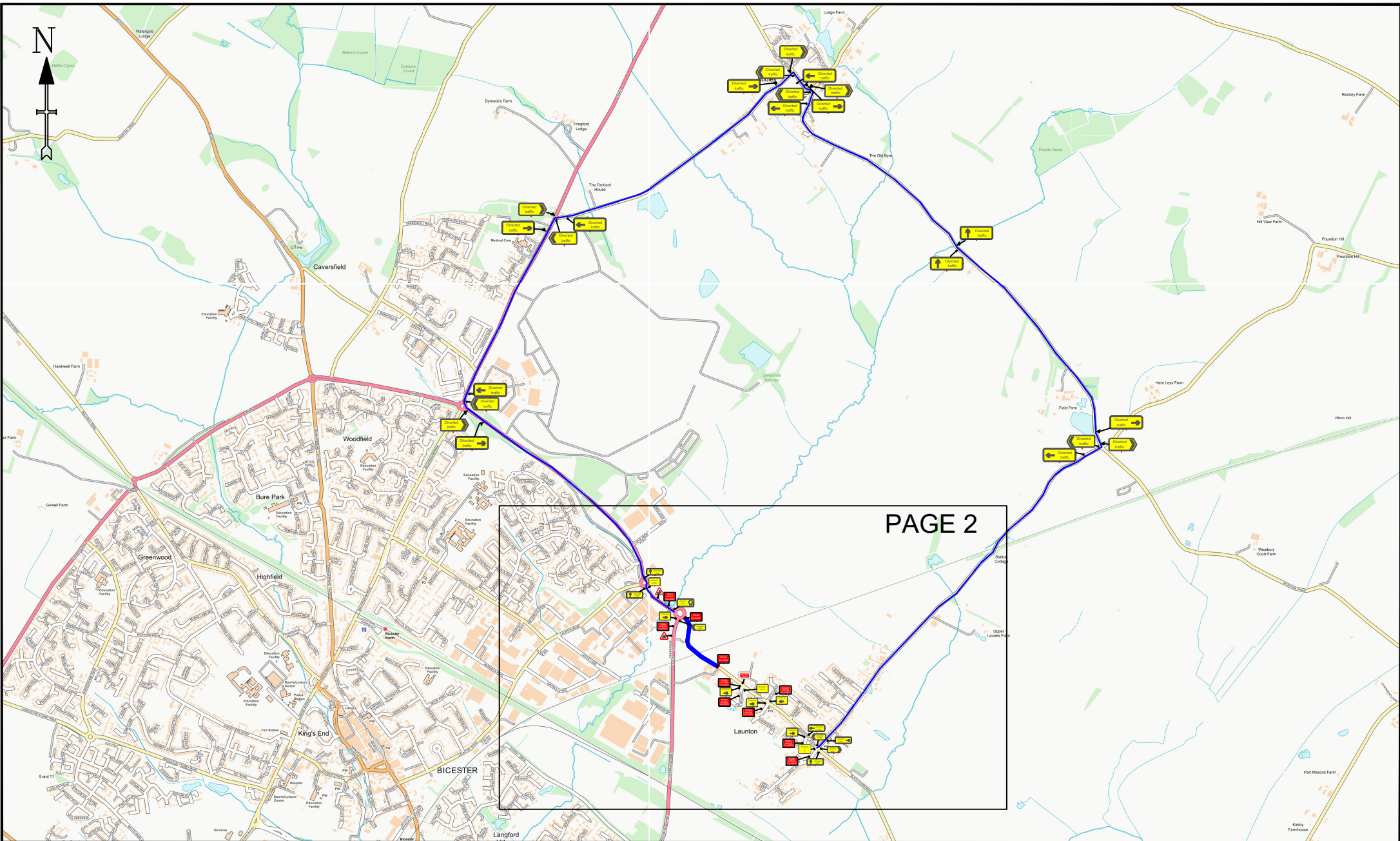
Bicester Road
A1 Site Compound Access
OX25 6EP

Drawing Notes

1. Do not scale from this drawing, all dimensions to be verified on site.
2. It will be the responsibility of the contractor to ensure that all temporary traffic management shall be in accordance with the Traffic Signs Manual chapter 8 2009. Safety at Street works 2015, Traffic Signs Regulations and General Directions 2016 and all current / relevant health and safety legislation.
3. All signage placement will be subject to available safe working spaces and all signage will be secured / fastened with straps or webbing.
4. A minimum lateral safety zone of 0.5m will be maintained at all times.
5. A minimum length of 3.0m will be maintained for vehicles.
6. A safe segregated working area will be provided and maintained at all times.
7. Minimum size of temporary signage will be 750mm.

CRE Approval: Ish Approved By: DB
Approval Date: Checked By: EL

© 2015. All rights reserved by permission of Ordnance Survey on behalf of HMSO. © Crown copyright 2015. All rights reserved. Ordnance Survey licence number 0100002002.



PAGE 2

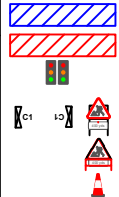
EWR Alliance
Connecting People

30

SAFETY ZONE DIMENSIONS
Permanent speed limit 30mph or less
Sideways safety zone 0.5m
Longways safety zone 0.5m
(Dimensions are minima)

Drawing Office

DWG Number	EWR2-2A-A1-0010	Date Surveyed	Customer
Revision	3	Date Drawn	02-07-20
Drawn By	PT	Phase Number	1 of 1
Survey By	DB	Page Number	1 of 3
Checked By	EJL		



Area of Works
Safety Zones
Temp Traffic Signals
900mm/1200mm Road Signs on 'A' Frames
750mm Road Signs
750mm/1m Road Cones

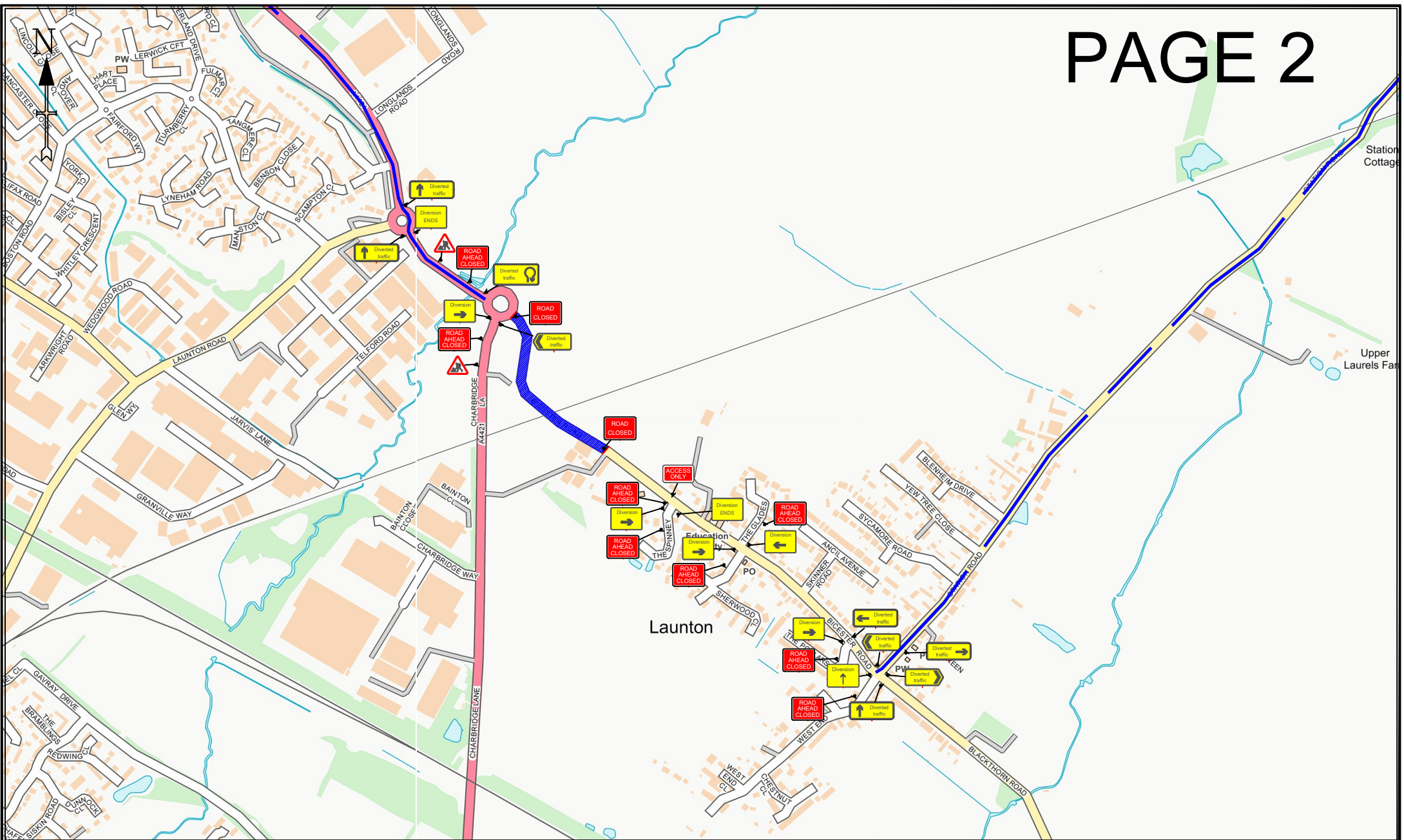
Site Details Address

Bicester Road
A1 Site Compound Access
OX25 6EP

Drawing Notes

1. Do not scale from this drawing, all dimensions to be verified on site.
2. It will be the responsibility of the contractor to ensure that all temporary traffic management shall be in accordance with the Traffic Signs Manual chapter 8 2009.
3. Safety at Street works 2015, Traffic Signs Regulations and General Directions 2016 and all current / relevant health and safety legislation.
4. An average placement will be subject to maintain safe working spaces and all signage will be secured / balanced with stops or sandbags.
5. A minimum lateral safety zone of 0.5M will be maintained at all times.
6. A minimum measuring lane of 3.0m will be maintained for vehicles.
7. A safe suspended working area will be provided and maintained at all times.
8. Minimum size of temporary signage will be 750mm.

CRE Approval: Ish Approved By: DB
Approval Date: Checked By: EL



EWR Alliance
Connecting People

30

SAFETY ZONE DIMENSIONS
Permanent speed limit 30mph or less
Sideways safety zone 0.5m
Longways safety zone 0.5m
(Dimensions are minima)

Drawing Office

DWG Number	EWR2-2A-A1-0010	Date Surveyed	Customer
Revision	3	Date Drawn	02-07-20
Drawn By	PT	Phase Number	1 of 1
Survey By	DB	Page Number	2 of 3
Checked By	EJL		

-  Area of Works
-  Safety Zones
-  Temp Traffic Signals
-  900mm/1200mm Road Signs on 'A' Frames
-  750mm Road Signs
-  750mm/1m Road Cones

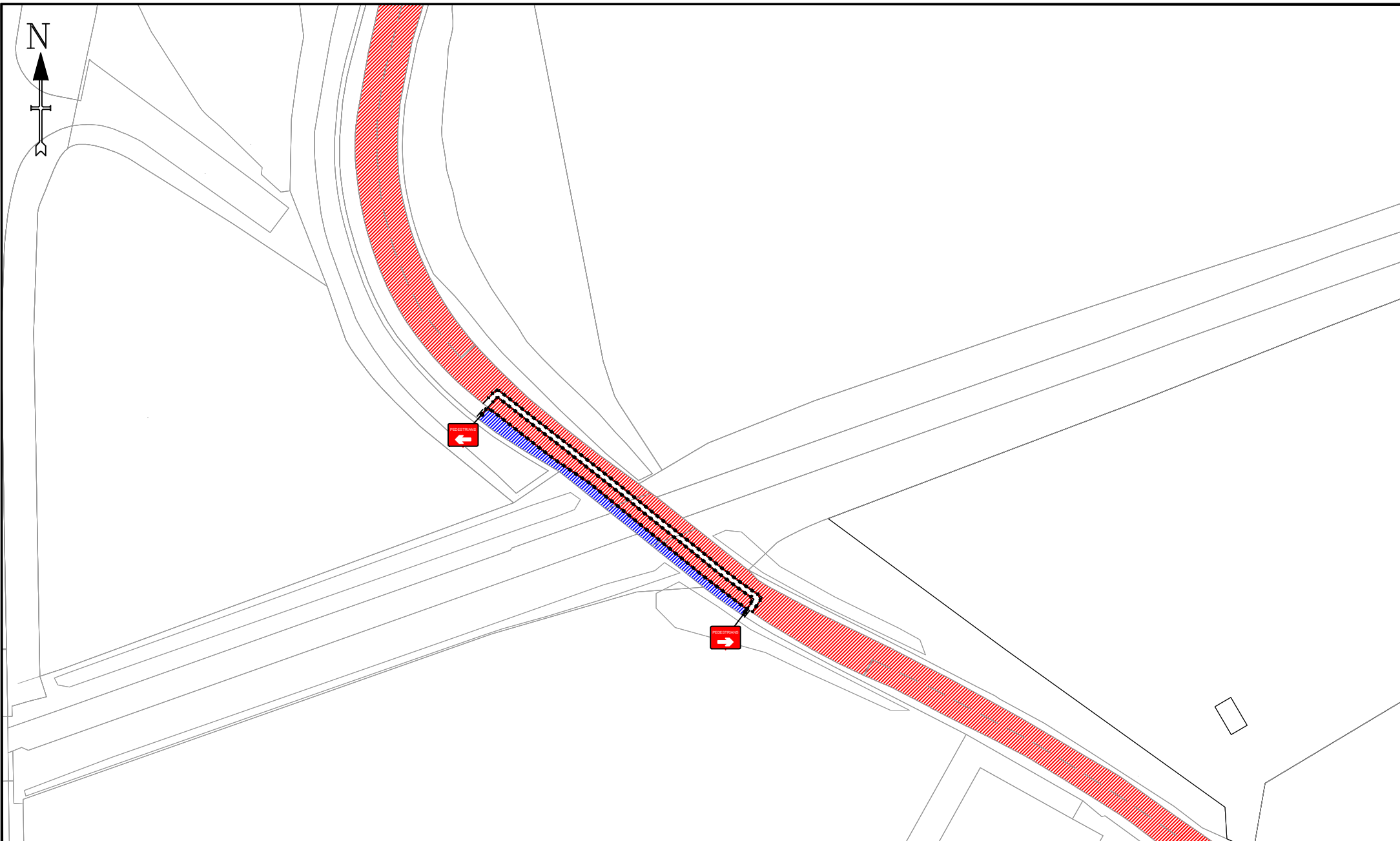
Site Details Address

Bicester Road
A1 Site Compound Access
OX25 6EP

Drawing Notes

1. Do not scale from this drawing, all dimensions to be verified on site.
2. It will be the responsibility of the contractor to ensure that all temporary traffic management shall be in accordance with the Traffic Signs Manual chapter 8 2000, Safety at Street works 2015, Traffic Signs Regulations and General Directions 2016 and all current / relevant health and safety legislation.
3. An appropriate pavement will be subject to materials water retaining capacity and all signage will be secured / substituted with stops or sandbags.
4. A minimum cleared safety zone of 0.5M will be maintained at all times.
5. A minimum working lane of 3.0m will be maintained for vehicles.
6. A safe segregated working area will be provided and maintained at all times.
7. Minimum size of temporary signage will be 750mm.

CRE Approval: Ish Approved By: DB
Approval Date: Checked By: EL



EWR Alliance
Connecting People

30

SAFETY ZONE DIMENSIONS
Permanent speed limit 30mph or less
Sideways safety zone 0.5m
Longways safety zone 0.5m
(Dimensions are minima)



Drawing Office

DWG Number	EWR2-2A-A1-0010	Date Surveyed	Customer
Revision	3	Date Drawn	02-07-20
Drawn By	PT	Phase Number	1 of 1
Survey By	DB	Page Number	3 of 3
Checked By	EJL		



Area of Works



Safety Zones



Temp Traffic Signals



900mm/1200mm Road Signs on 'A' Frames



750mm Road Signs



750mm/1m Road Cones

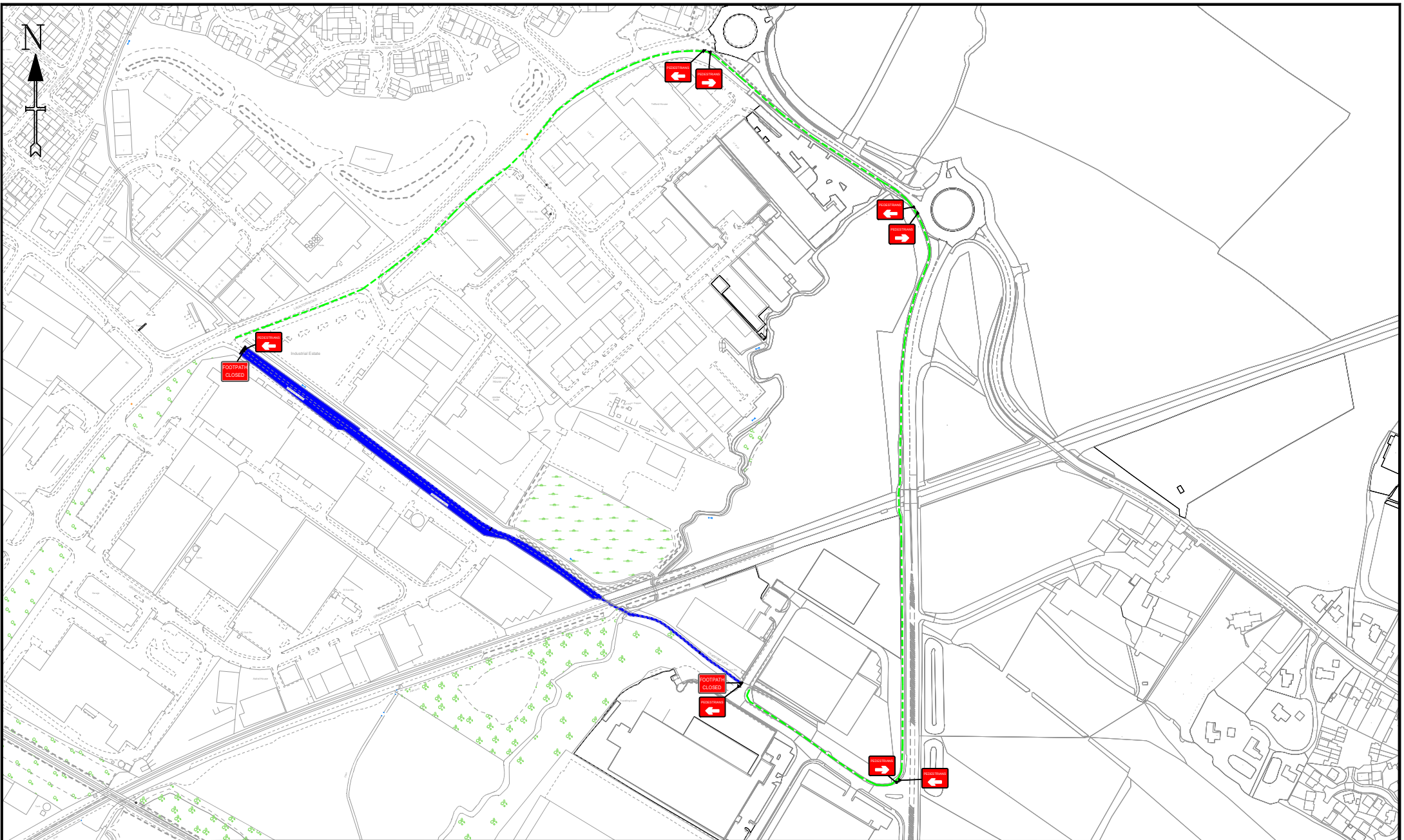
Site Details Address

Bicester Road
A1 Site Compound Access
OX25 6EP

Drawing Notes

1. Do not scale from this drawing. All dimensions to be verified on site.
2. It will be the responsibility of the contractor to ensure that all temporary traffic management shall be in accordance with the Traffic Signs Manual chapter 8 2009. Safety at Street works 2015, Traffic Signs Regulations and General Directions 2016 and all current / relevant health and safety legislation.
3. An appropriate placement of the subject to maintain safe working spaces and all signage will be secured / balanced with stops or sandbags.
4. A minimum lateral safety zone of 0.5m will be maintained at all times.
5. A minimum working lane of 3.0m will be maintained for vehicles.
6. A safe segregated working area will be provided and maintained at all times.
7. Maximum size of temporary signage will be 750mm.

CRE Approval: Ish Approved By: DB
Approval Date: Checked By: EL



EWR Alliance
Connecting People

30

SAFETY ZONE DIMENSIONS (S)
Permanent speed limit 30mph or less
Sideways safety zone 0.5m
Longways safety zone 0.5m
(Dimensions are minima)



Drawing Office

DWG Number	EWR2-2A-A1-0035	Date Surveyed	Customer
Revision	1	Date Drawn	17-02-20
Drawn By	PT	Phase Number	1 of 1
Survey By	DB	Page Number	1 of 1
Checked By	EJL		



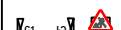
Area of Works



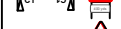
Safety Zones



Temp Traffic Signals



900mm/1200mm Road Signs on 'A' Frames



750mm Road Signs



750mm/1m Road Cones

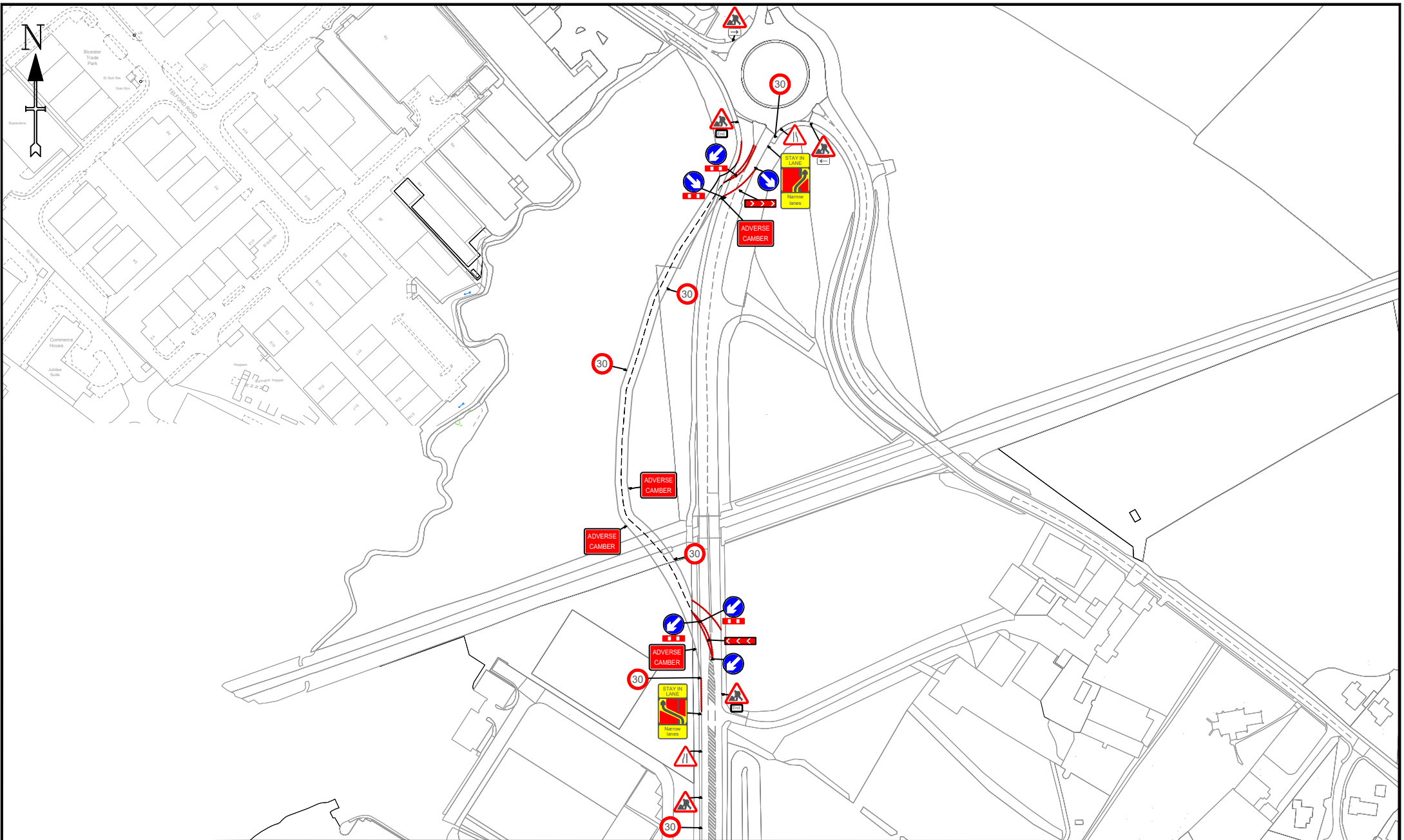
Site Details Address

Charbridge Road
OX26 4SW

Drawing Notes

1. Do not scale from this drawing, all dimensions to be verified on site.
2. It will be the responsibility of the contractor to ensure that all temporary traffic management shall be in accordance with the Traffic Signs Manual chapter 8 2009 Safety at Street works 2015, Traffic Signs Regulations and General Directions 2016 and all current / relevant health and safety legislation.
3. An average placement will be subject to available safe working spaces and all signage will be secured / balanced with stops or sandbags.
4. A minimum lateral safety zone of 0.5M will be maintained at all times.
5. A minimum length of 3.0m will be maintained for vehicles.
6. A safe segregated working area will be provided and maintained at all times.
7. Maximum size of temporary signage will be 750mm.

CRE Approval: Ish Approved By: DB
Approval Date: Checked By: EL



EWR Alliance
Connecting People



SAFETY ZONE DIMENSIONS (S)
Permanent speed limit 30mph or less
Sideways safety zone 0.5m
Longways safety zone 0.5m
(Dimensions are minima)

Drawing Office

DWG Number	EWR2-2A-A1-0036	Date Surveyed	Customer
Revision	2	Date Drawn	14-05-20
Drawn By	PT	Phase Number	1 of 1
Survey By	DB	Page Number	1 of 1
Checked By	EJL		



Area of Works
Safety Zones
Temp Traffic Signals
Signs on 'A' Frames
750mm Road Signs
750mm/1m Road Cones

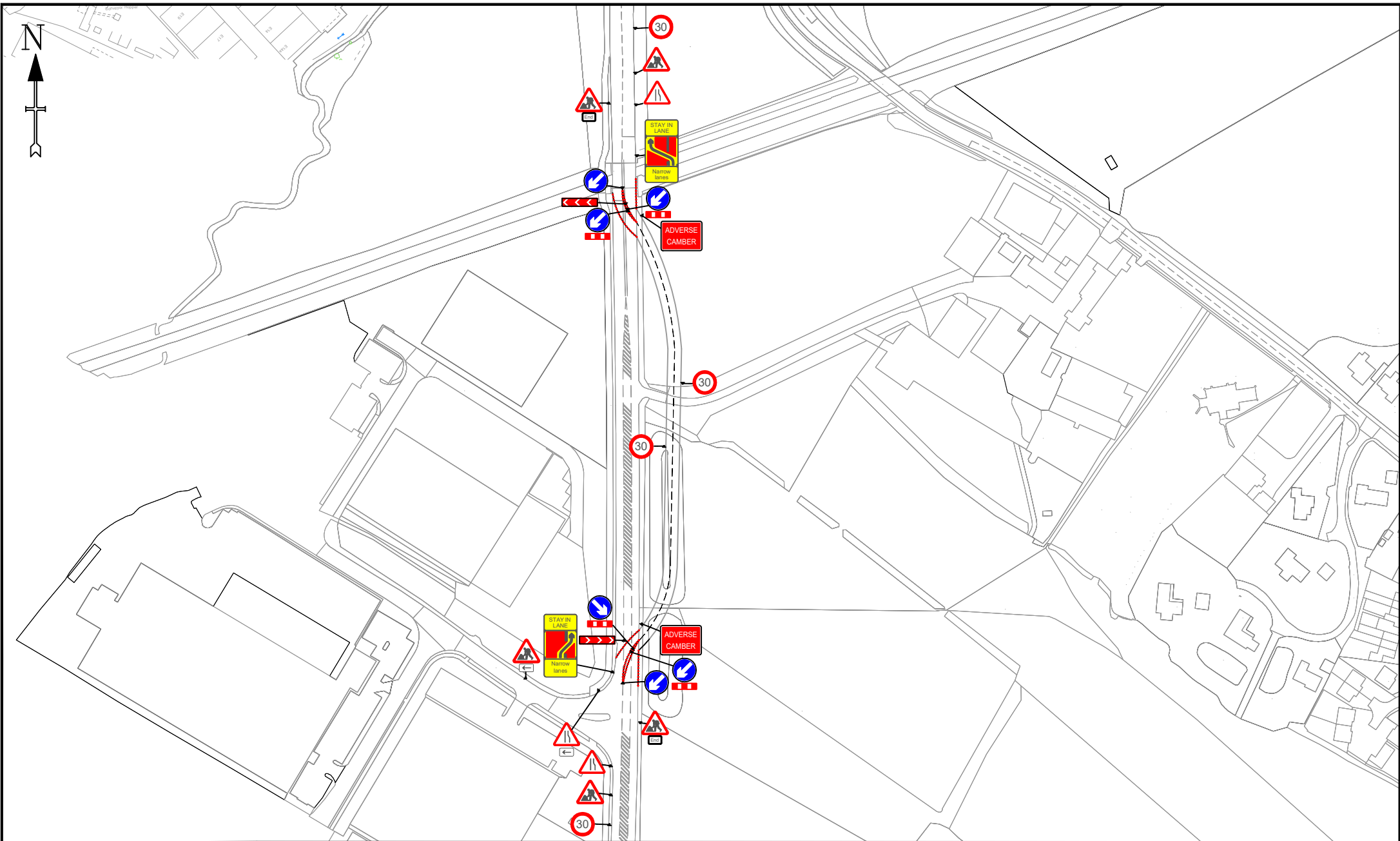
Site Details Address

Charbridge Lane
OX26 4SW

Drawing Notes

1. Do not scale from this drawing, all dimensions to be verified on site.
2. It will be the responsibility of the contractor to ensure that all temporary traffic management shall be in accordance with the Traffic Signs Manual chapter 8 2009, Safety at Street works 2015, Traffic Signs Regulations and General Directions 2016 and all current / relevant health and safety legislation.
3. An average placement will be subject to available safe working spaces and all signage will be secured / balanced with stops or sandbags.
4. A minimum lateral safety zone of 0.5M will be maintained at all times.
5. A minimum length of 3.0m will be maintained for vehicles.
6. A safe segregated working area will be provided and maintained at all times.
7. Minimum size of temporary signage will be 750mm.

CRE Approval: Ish Approved By: DB
Approval Date: Checked By: EL



EWR Alliance
Connecting People



SAFETY ZONE DIMENSIONS (S)
Permanent speed limit 30mph or less
Sideways safety zone 0.5m
Longways safety zone 0.5m
(Dimensions are minima)

Drawing Office

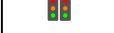
DWG Number	EWR2-2A-A1-0037	Date Surveyed	Customer
Revision	2	Date Drawn	14-05-20
Drawn By	PT	Phase Number	1 of 1
Survey By	DB	Page Number	1 of 1
Checked By	EJL		



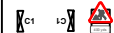
Area of Works



Safety Zones



Temp Traffic Signals



900mm/1200mm Road Signs on 'A' Frames



750mm Road Signs



750mm/1m Road Cones

Site Details Address

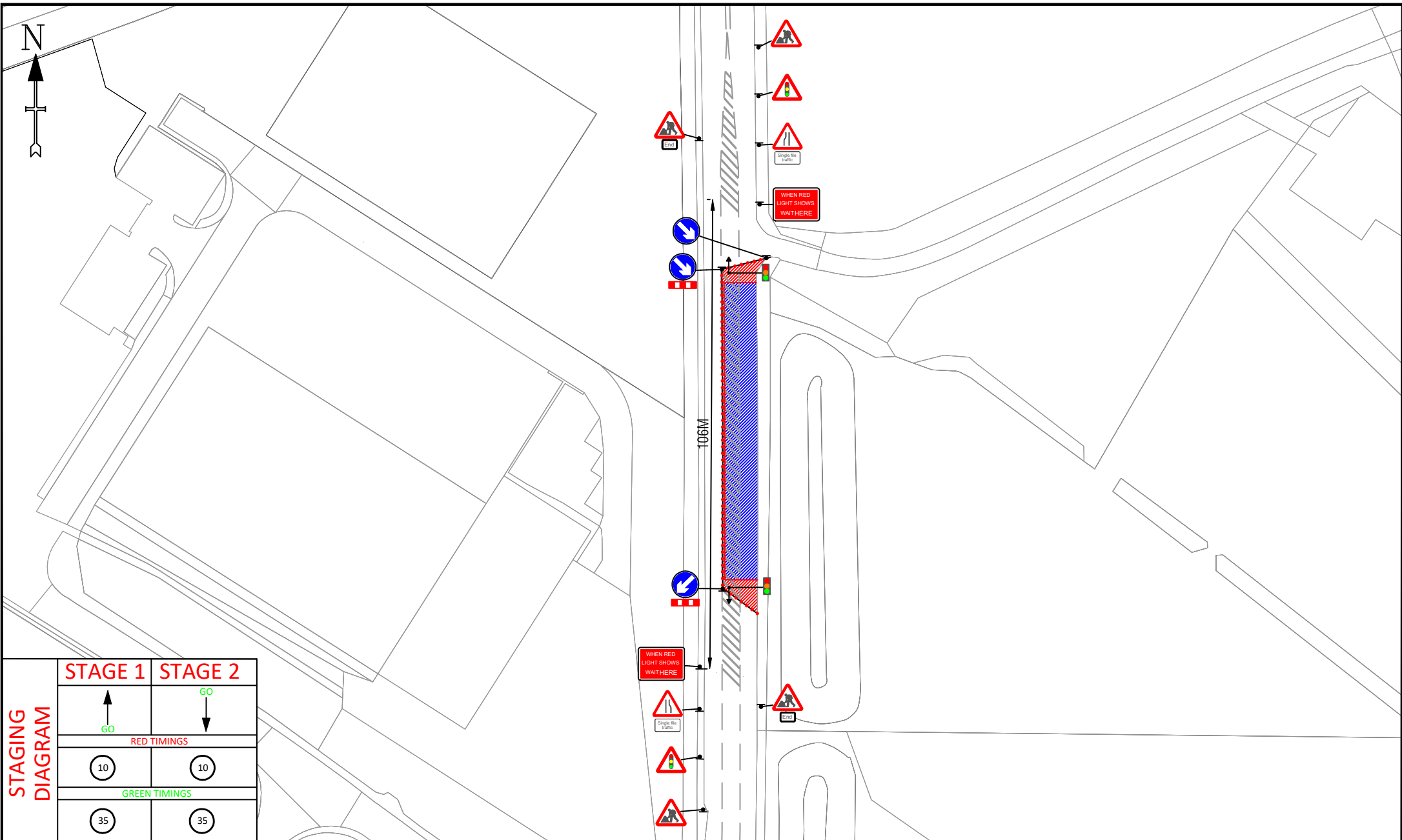
Charbridge Lane
OX26 4SW

Drawing Notes

1. Do not scale from this drawing, all dimensions to be verified on site.
2. It will be the responsibility of the contractor to ensure that all temporary traffic management shall be in accordance with the Traffic Signs Manual chapter 4 2009.
3. Safety at Street works 2015, Traffic Signs Regulations and General Directions 2016 and all current / relevant health and safety legislation.
4. An orange placement of the subject to maintain safe working spaces and all signage will be secured / fastened with straps or webbing.
5. A minimum lateral safety zone of 0.5m will be maintained at all times.
6. A measuring line of 3.0m will be maintained for vehicles.
7. A safe segregated working area will be provided and maintained at all times.
8. Minimum size of temporary signage will be 700mm.

CRE Approval: Ish Approved By: DB
Approval Date: Checked By: EL

© EWR Alliance 2020. All rights reserved. EWR Alliance is a registered company in England and Wales. No. 10402020. EWR Alliance is a registered company in England and Wales. No. 10402020.



STAGING DIAGRAM

STAGE 1	STAGE 2
↑ GO	↓ GO
RED TIMINGS	
10	10
GREEN TIMINGS	
35	35

EWR Alliance
Connecting People

30

SAFETY ZONE DIMENSIONS (S)
 Permanent speed limit 30mph or less
 Sideways safety zone 0.5m
 Longways safety zone 0.5m
 (Dimensions are minima)

Drawing Office

DWG Number	EWR2-2A-A1-0038	Date Surveyed	Customer
Revision	1	Date Drawn	17-02-20
Drawn By	PT	Phase Number	1 of 1
Survey By	DB	Page Number	1 of 1
Checked By	EJL		

- Area of Works
- Safety Zones
- Temp Traffic Signals
- Signs on 'A' Frames
- 750mm Road Signs
- 750mm/1m Road Cones

Site Details Address
 Charbridge Road
 OX26 4SW

Drawing Notes

1. Do not scale from this drawing, all dimensions to be verified on site.
2. It will be the responsibility of the contractor to ensure that all temporary traffic management shall be in accordance with the Traffic Signs Manual chapter 8 2009, Safety at Street works 2015, Traffic Signs Regulations and General Directions 2016 and all current / relevant health and safety legislation.
3. An orange placement will be subject to available safe working spaces and all signage will be secured / stabilized with stops or sandbags.
4. A minimum lateral safety zone of 0.5M will be maintained at all times.
5. A measuring wheel of 3.0m will be maintained for vehicles.
6. A safe segregated working area will be provided and maintained at all times.
7. Maximum size of temporary signage will be 750mm.

CRE Approval: Ish Approved By: DB
 Approval Date: Checked By: EL

© EWR Alliance 2020. All rights reserved. Charbridge Road