

GENERAL NOTES:

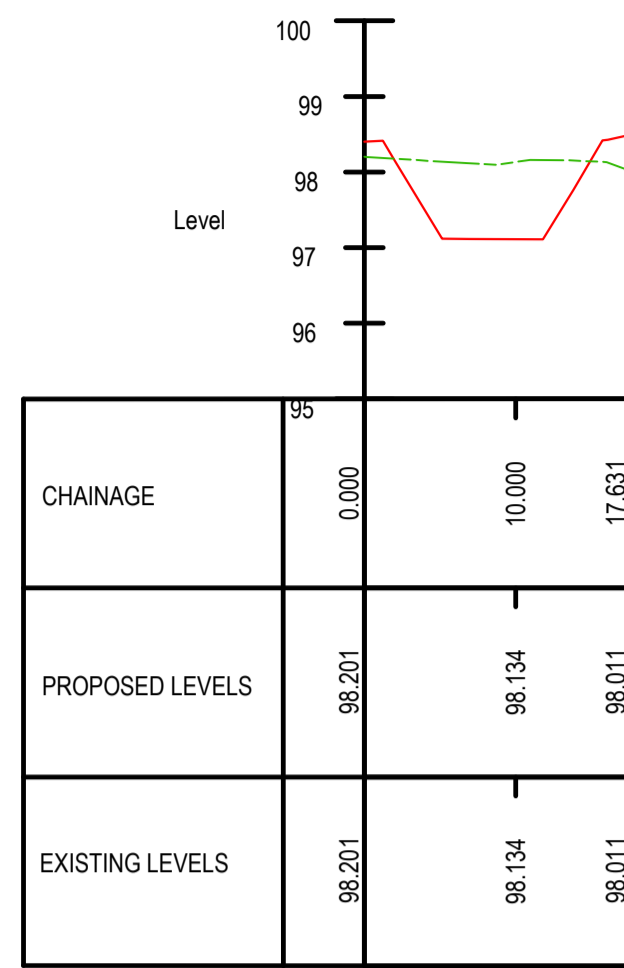
1. THIS DRAWING IS TO BE READ IN CONJUNCTION WITH ALL RELEVANT ARCHITECTS AND ENGINEERS DRAWINGS AND SPECIFICATIONS.
2. DO NOT SCALE THIS DRAWING. ANY AMBIGUITIES, OMISSIONS AND ERRORS ON DRAWINGS SHALL BE BROUGHT TO THE ENGINEERS ATTENTION IMMEDIATELY. ALL DIMENSIONS MUST BE CHECKED / VERIFIED ON SITE.
3. ALL DIMENSIONS ARE IN METRES UNLESS NOTED OTHERWISE.
4. FOR GENERAL NOTES REFER TO DRAWING.

KEY

- EXISTING LEVEL LINE
- PROPOSED LEVEL LINE

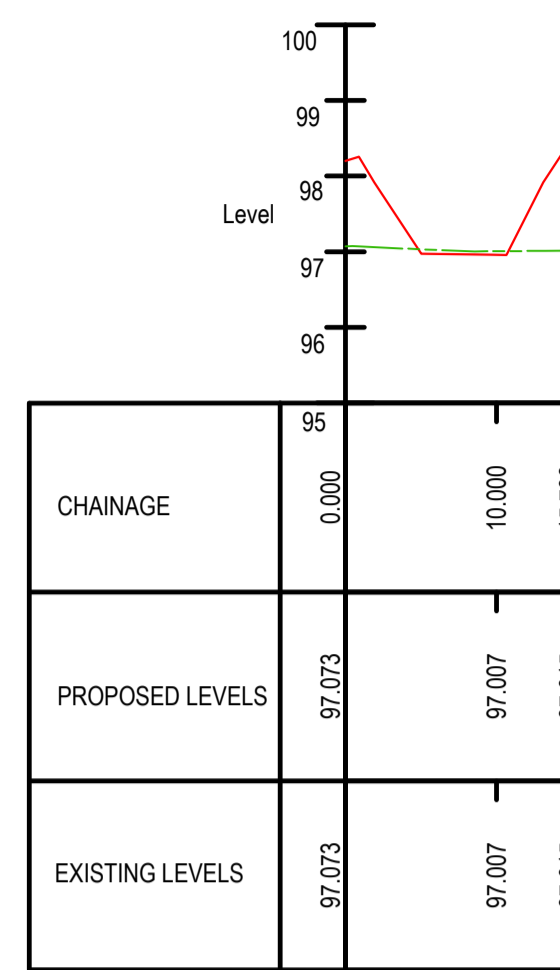
NOTE:
PROPOSED BASIN CONSTRUCTION TO SUIT 072305-CUR-03-XX-DR-C-92010 AND 072305-CUR-03-X-DR-C-92011

SCALE: H 1:500, V 1:100, DATUM: 95.000



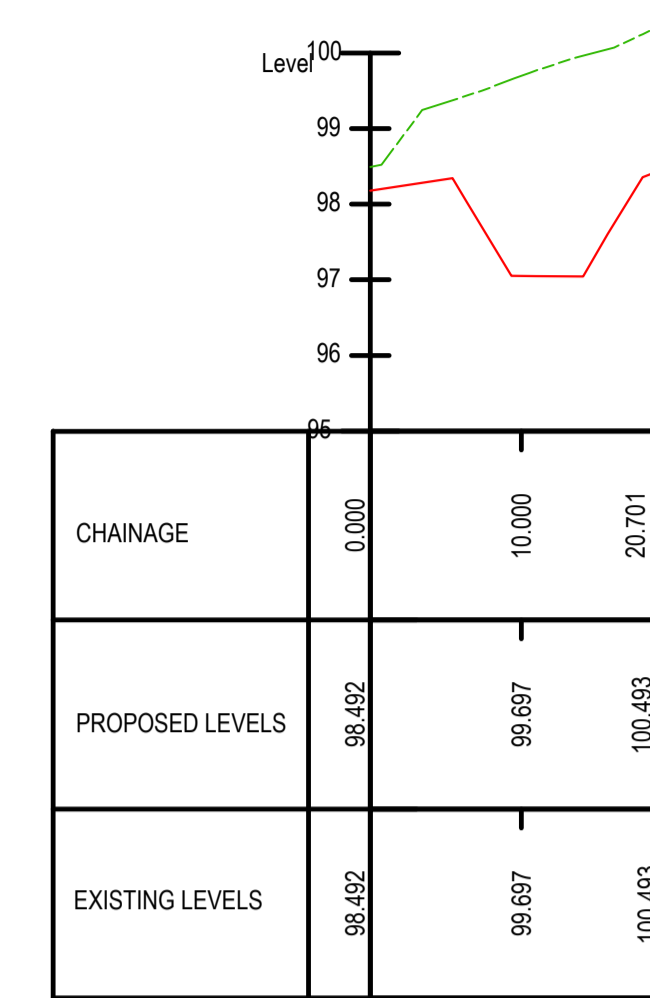
SECTION A-A

SCALE: H 1:500, V 1:100, DATUM: 95.000



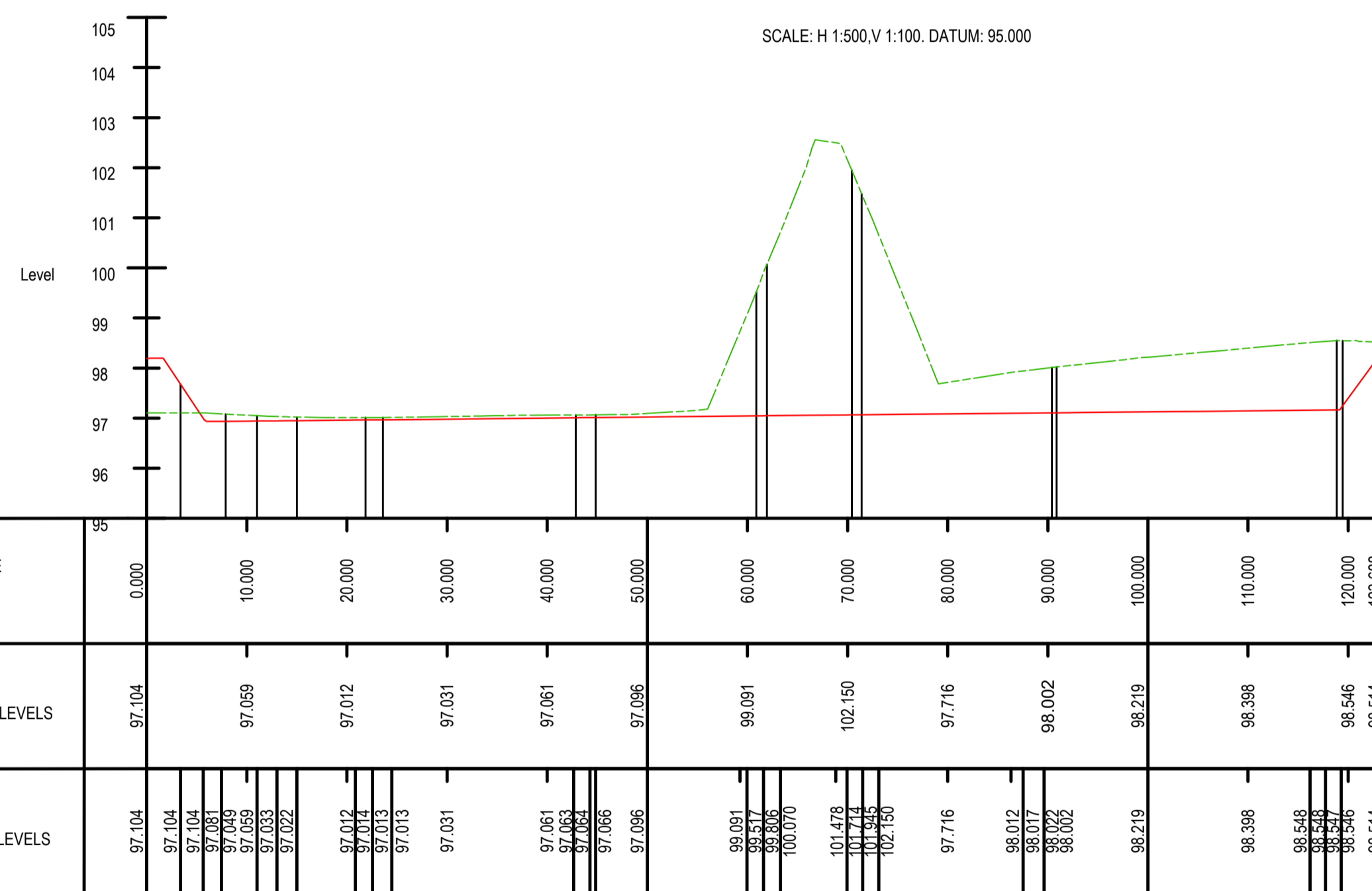
SECTION B-B

SCALE: H 1:500, V 1:100, DATUM: 95.000



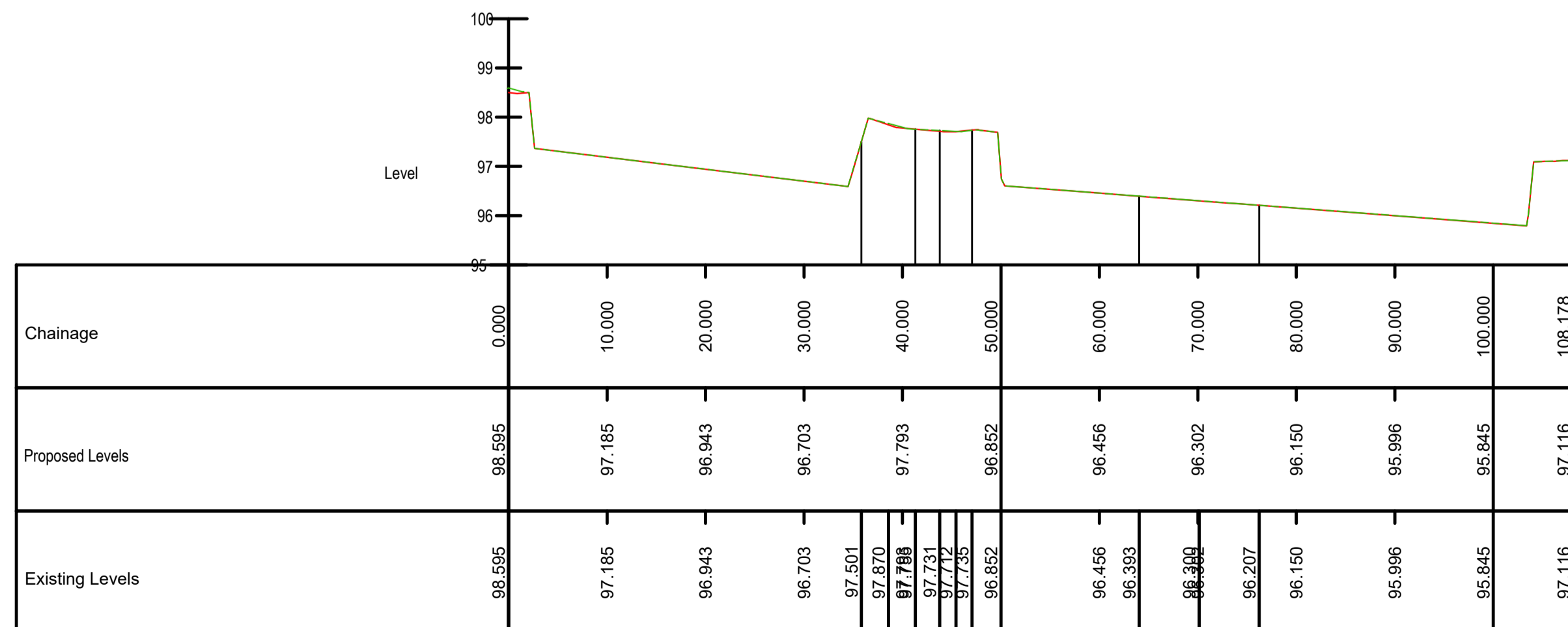
SECTION C-C

SCALE: H 1:500, V 1:100, DATUM: 95.000



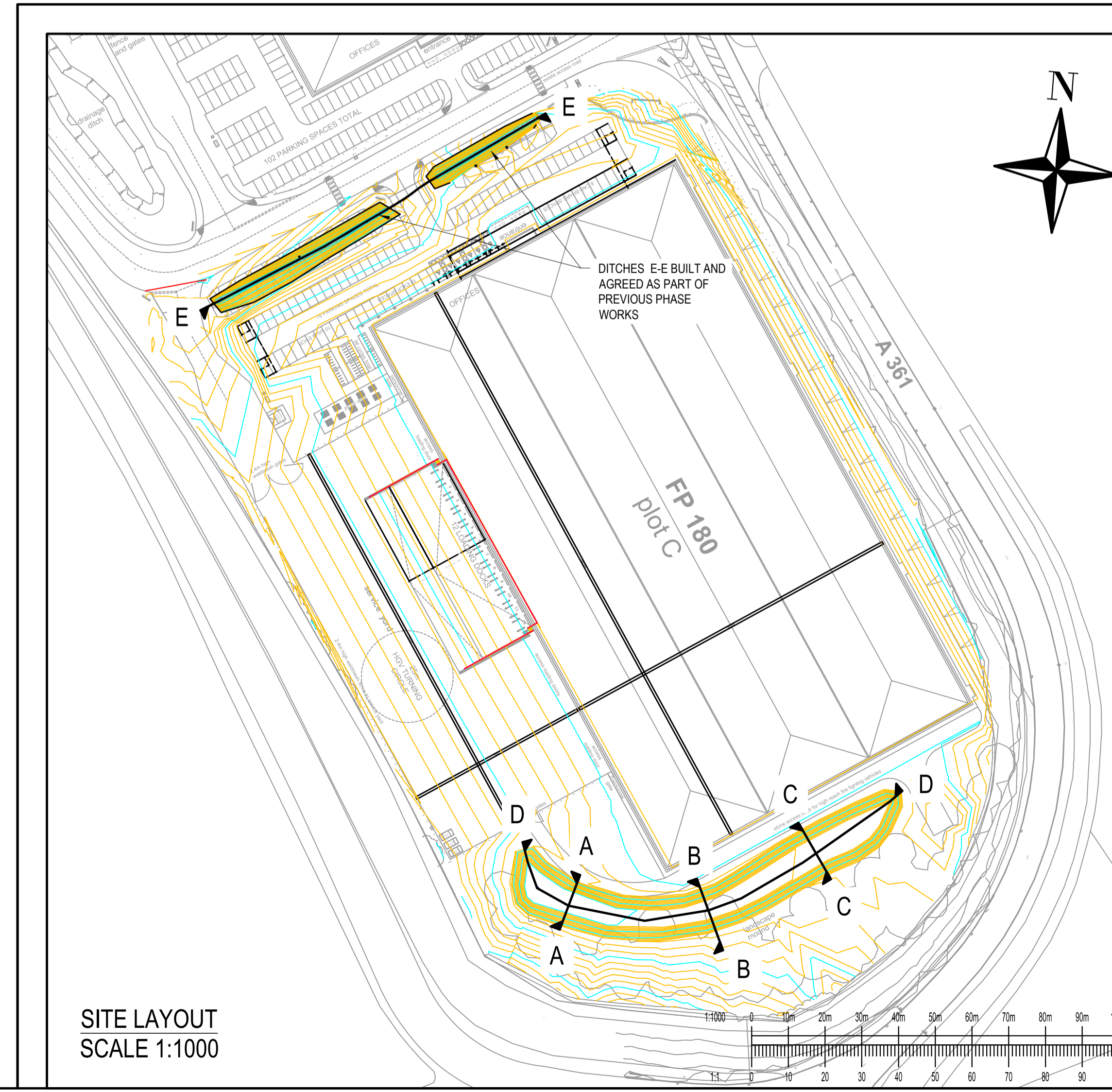
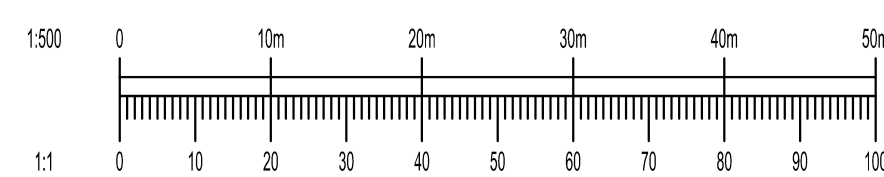
LONG-SECTION D-D

SCALE: H 1:500, V 1:100, DATUM: 95.000



LONG-SECTION E-E AS EXISTING

SECTIONS SCALE 1:500



SITE LAYOUT SCALE 1:1000

C01	POND SECTION	04/10/23	GS	JT
Rev.	Description:	Date:	By:	Chkd:

Curtins
Units 24-25 Riverside Place, K Village, Lound Road, Kendal, LA9 7FH
01539 724823
kendal@curtins.com
www.curtins.com

SUITABLE FOR CO-ORDINATION S1

Client: **BARNFIELD CONSTRUCTIONS**

Project: **J11 BANBURY PHASE 3**

Dig Title: **POND SECTIONS**

Drawn By	GS	Designed By	GS	Checked By	JT	
Project No	072305	Date	22/09/23	Scales @ A1	AS SHOWN	
Project Code - Originator - Function - Spatial - Form - Discipline - Number	072305 - CUR - 03 - XX - D - C - 90002				Revision	C01

\\s602\Projects\072305_304 - J11 Banbury Phase 3\04-Production\44-Models\Drawings\C01.DWG